

U.S. PUBLIC LAND SURVEY MONUMENT RECORD

(As Required By s. A-E 7.08, WI Adm. Code)

History of original corner establishment and subsequent restorations and description of any record, monument, occupational, testimonial or other evidence considered: *The area of the subject corner has been subject to flooding and physical evidence of the original corner has been wiped out. The corner was restored by retracing the lines of Tract No. FW-56 of the Mississippi River Lock & Dam No. 11 Land Acquisition Survey dated 4/13/1937. The location was further verified by the 1936 field notes from this survey. The distance between this corner and the NW corner checked by 0.2' +/-*

Corner was: (Check All That Apply)

- Restored through acceptance of an obliterated evidence location
- Restored through acceptance of a found perpetuated location
- Considered a lost corner and reestablished through lost corner proportionate methods (include a plan view drawing showing distances and directions to other Public Land Survey Corners used for proportioning and determining the corner location)
- Restored or reestablished in a location that differs from a previous restoration or reestablishment (include a plan view drawing and indicate what was set and/or found)

Describe the monument and accessories used to perpetuate the location of this corner. (Include a plan view drawing and indicate what was set and/or found)

Set 1" x 30" Iron Rod with Aluminum County Cap at Corner

Set 3/4" Iron Rod (60' +/- south of road centerline)

Not to Scale

1" = 6' +/- near corner

1/2" Iron Rod set at surface

Set 1/2" Iron Rod at base of concrete set Post

The SE
corner of Section 10
T. 2 N., R. 3 W.,
Grant County, Wisconsin
Job ID: 2001-55A
Book # 3

*A-B N89°57'56"W
173.00'
B-C N49°37'56"W
717.65'
C-D N45°55'04"E
100.47'*

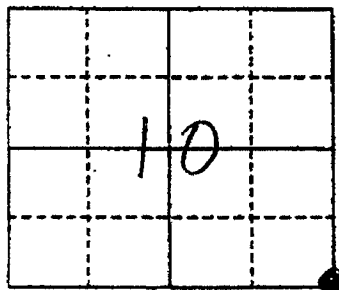
*S 72°20'08"W
6.66'*

*N 11°34'39"E
6.83'*

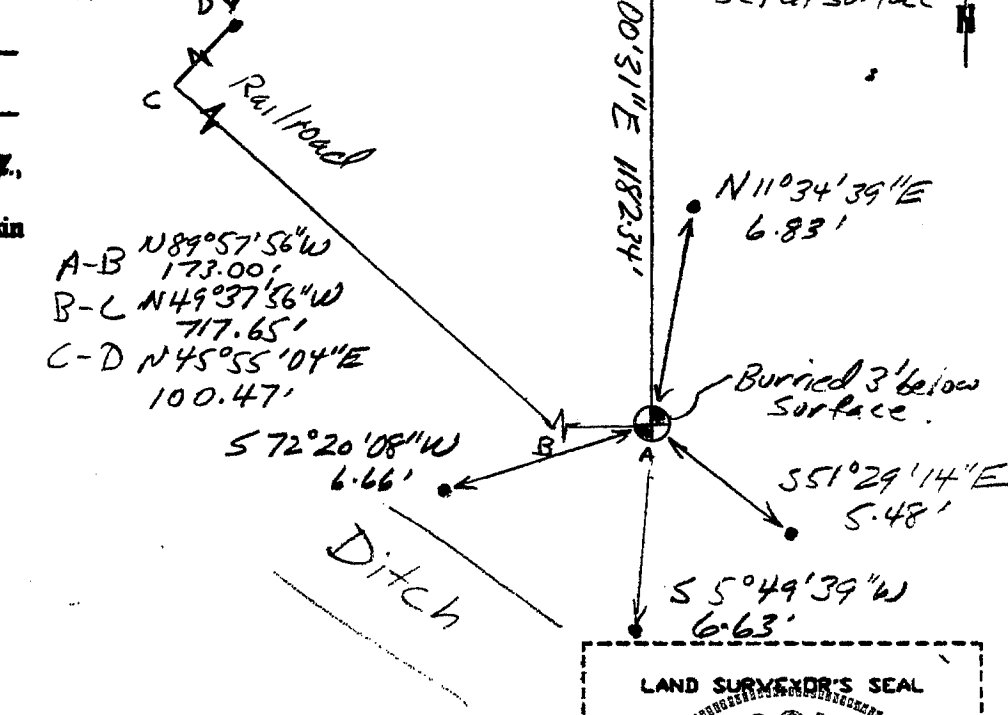
*S 51°29'14"E
5.48'*

*S 5°49'39"W
6.63'*

Buried 3' below surface



● = Location of Corner



Michael R. LaRosa

Type or print name) certify that the corner location shown on this record was determined by me or under my direction and control and that this U.S. Public Land Survey Monument Record is correct and complete to the best of my knowledge and belief.

Michael R. LaRosa 12/16/2001

Signature

Date

Index No. _____