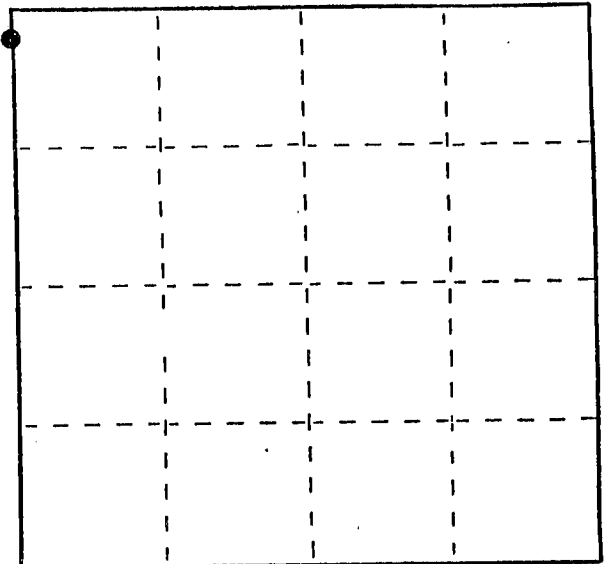


U. S. PUBLIC LAND SURVEY MONUMENT RECORD

INSTRUCTIONS: This record shall show the location of the corner and shall include all of the following nine elements (a through i).

- (a) Identify the corner by reference to the U.S. public land survey system.
 ● = Corner monument restored.



Section 5 T2N R5W

WITNESS CORNER
 To The NW Corner of Section 5

T 2 N R 5 W

Town of Potosi (South Part)

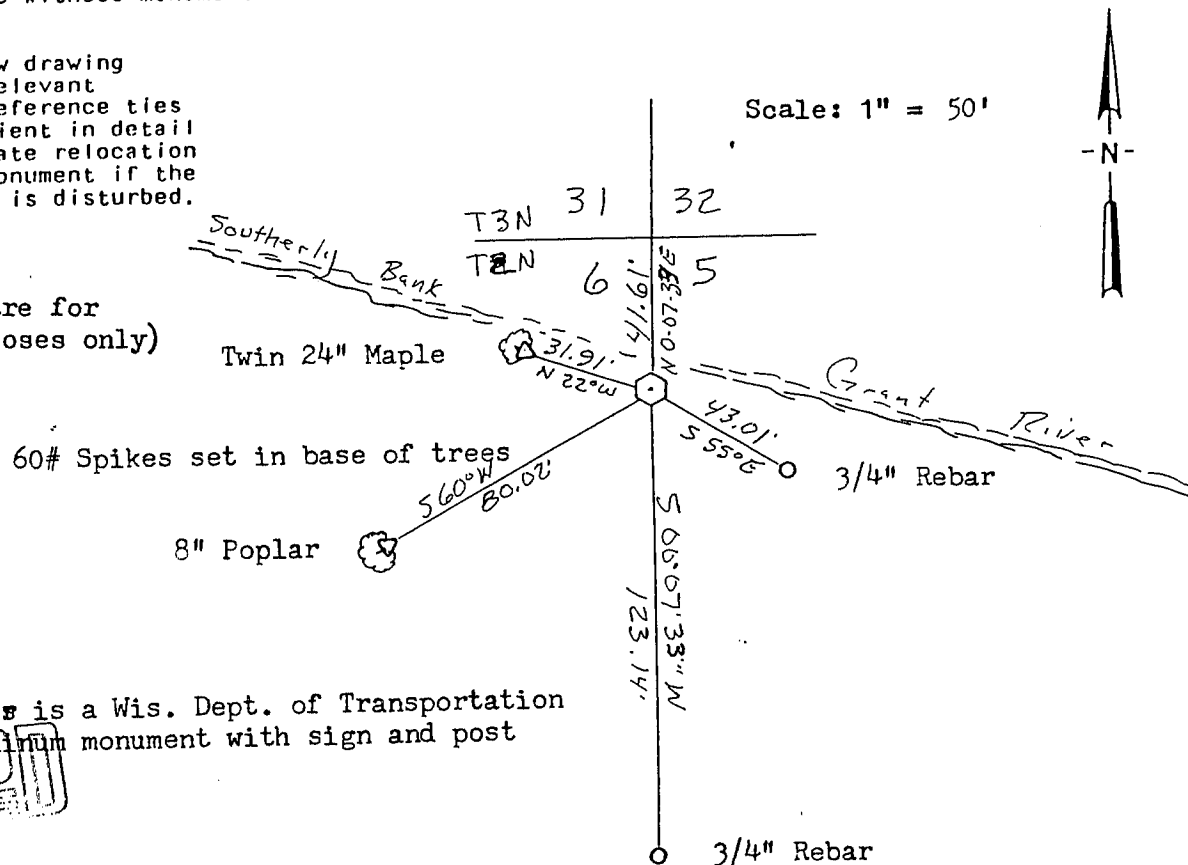
Grant Co., Wis.

(b) Describe any record evidence, monument evidence, occupational evidence, testimonial evidence or any other material evidence you considered, and whether the monument was found or placed. Original corner set by Lucius Lyon in the 1st 1/4 of 1833; found no record of any re-surveys concerning this corner, or any other surveys showing the corner. The original survey placed this corner in the (Grant) river. The West 1/4 corner was placed 2640' to the South; there is no occupation lines at either the 40 corner to the South or North, and I found no evidence of the West 1/4 corner of Sec, 32-3-4. I feel the best location of the corner is 2640' from the West 1/4 corner, and in the river, as per original survey.

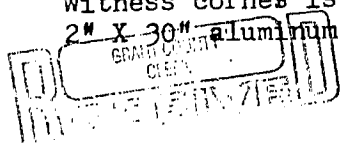
(c) In the plan view drawing below, provide reference ties to at least 4 witness monuments, or, if the location is within a municipality, to at least 2 witness monuments. (Witness monuments shall be made of concrete, natural stone, iron or other equally durable material.) Describe witness monuments.

(d) Show a plan view drawing depicting the relevant monuments and reference ties which is sufficient in detail to enable accurate relocation of the corner monument if the corner monument is disturbed. Indicate north.

(Bearings shown are for orientation purposes only)



Witness corner is a Wis. Dept. of Transportation
 2" X 30" aluminum monument with sign and post



SEP 13 1989

P 118

(e) Describe any material discrepancy between the location of the corner as restored or reestablished and the location of that corner as previously restored or reestablished by distance and direction. Show the discrepancy on the plan view drawing under (d), above. Show the distances between the corner as previously restored or reestablished and (1) the corner as restored or reestablished, and (2) to at least 2 of the witness monuments shown on the drawing in (d), above.

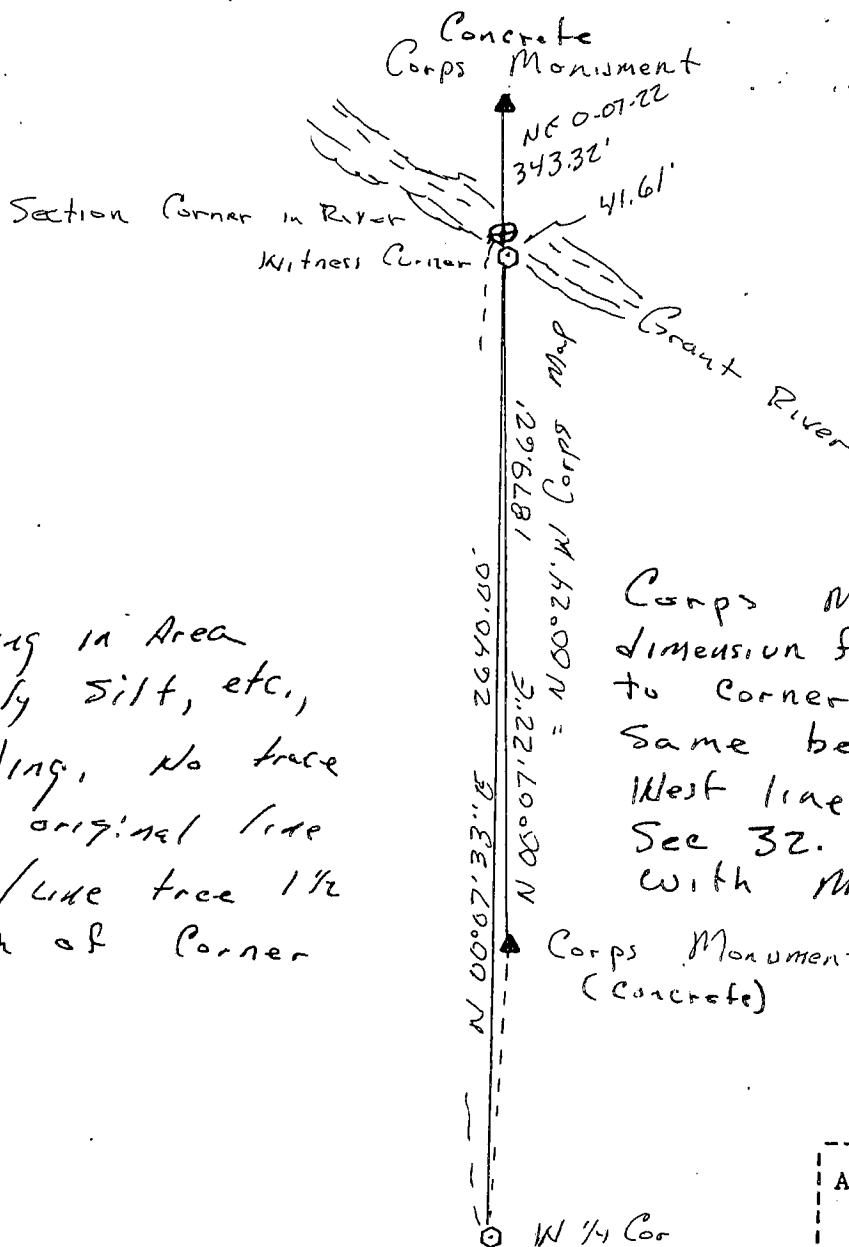
Nothing major; the only discrepancy may be in a Corps of Engineers (War Department) easement map showing the corner and line to be on the North side of the river; I found very few Corps monuments but one I did find readily is the one immediately North of this area. They do not show any dimension from this monument to the corner, as they do on every other like circumstance, leading me to believe they did not have a location for the corner, and as shown on the map is a scrivener's error or supposition.

(f) Was the corner restored through acceptance of (1) an obliterated evidence location, or, (2) a found perpetuated location?

Obliterated evidence location

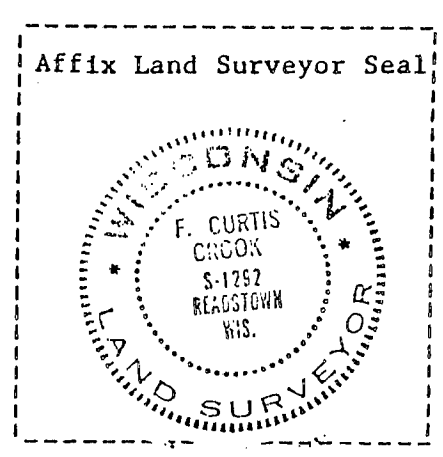
(g&h) Was the corner reestablished through lost corner proportionate methods? If so, show the method, including the directions and distances to other public land survey corners used as evidence or used for proportioning in determining the corner location?

NO



Corps Maps do not give dimension from monuments to corner, but do give same bearing along entire West line of S₁ into Sec 32. Placed on line with monuments, 2670 from W 1/4 Cor for computation of Sec Cor.

Hand digging in Area reveals only silt, etc., from flooding, no trace found of original line on bearing/line trace 1/2 chains south of corner



(1) I, F. Curtis Crook (type or print name) certify that the corner location shown on this record was determined by me or under my direction and control and that this U.S. Public Land Survey Monument Record is correct and complete to the best of my knowledge and belief.

F. Curtis Crook S-25-89
Sketch Added 6-6-89