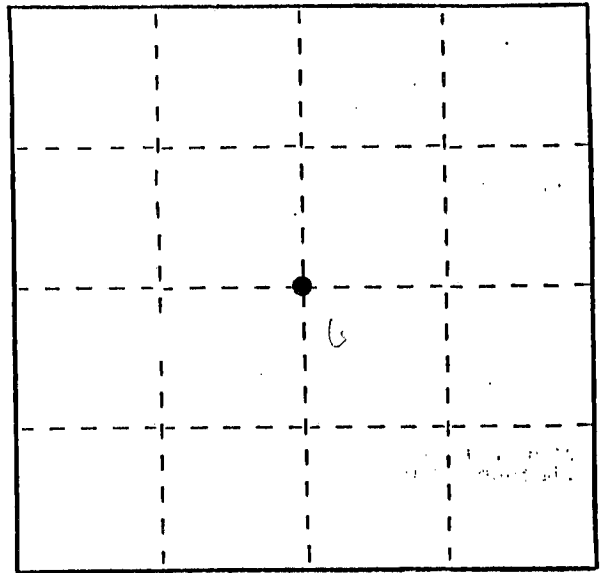


U. S. PUBLIC LAND SURVEY MONUMENT RECORD

INSTRUCTIONS : This record shall show the location of the corner and shall include all of the following nine elements (a through i).

- (a) Identify the corner by reference to the U.S. public land survey system.
 ● = Corner monument restored.

Center of Section 6
 T 2 N R 3 W
 Town of Potosi (South Part)
 Grant Co., Wis.



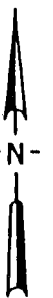
Section 6 T2N R3W

(b) Describe any record evidence, monument evidence, occupational evidence, testimonial evidence or any other material evidence you considered, and whether the monument was found or placed.
 Found no record of this corner being previously established. A survey of the East 1/2 of Section 1 T2n R4W, and the West 1/2 of this Section ran down the N-S 1/4 line, no references or distances shown, to an Elm tree at the Mississippi River. This survey was dated February 22nd 1856, initialed "J. B.", no other name was given. Lacking other evidence, the corner was placed as prescribed, using a computed location for the S1/4 Corner. (Railroad and Corps of Engineers maps show nothing conclusive)

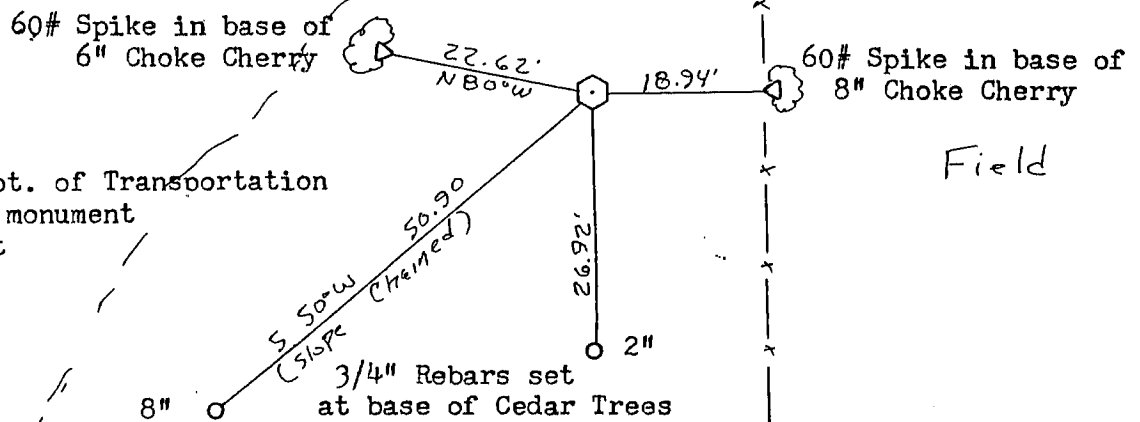
(c) In the plan view drawing below, provide reference ties to at least 4 witness monuments, or, if the location is within a municipality, to at least 2 witness monuments. (Witness monuments shall be made of concrete, natural stone, iron or other equally durable material.)
 Describe witness monuments.

(d) Show a plan view drawing depicting the relevant monuments and reference ties which is sufficient in detail to enable accurate relocation of the corner monument if the corner monument is disturbed. Indicate north.

Scale: 1" = 20'



(Bearings shown are for orientation purposes only)



Corner is Wis. Dept. of Transportation
 2" X 30" aluminum monument
 with sign and post

SEP 13 1989

P. 19. S

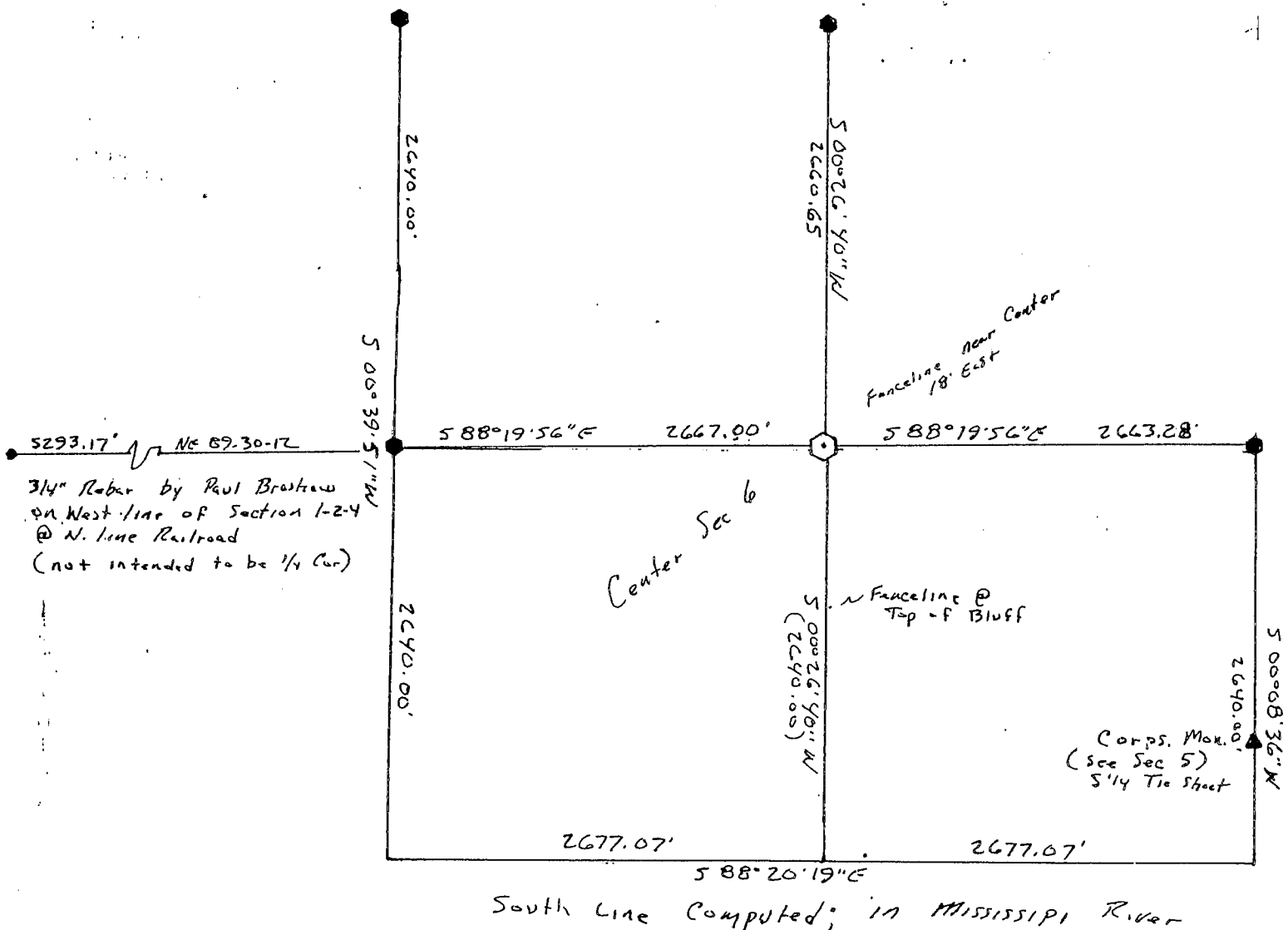
(e) Describe any material discrepancy between the location of the corner as restored or reestablished and the location of that corner as previously restored or reestablished by distance and direction. Show the discrepancy on the plan view under (d), above. Show the distances between the corner as previously restored or reestablished and (1) the corner as restored or reestablished, and (2) to at least 2 of the witness monuments shown on the drawing in (d), above.

None; the closed EDM traverse shows the fence at the bluff to be within 4'; no obvious explanation as to missing the fence by 18', as shown on reverse side. As the fence is much closer at the bluff to the south, it would point to moving the North 1/4 corner further East, 36', approximately. Occupation lines and Section measurements rule this out. (3 possibilities- "J.B." meandered off line- an approximation or guess as to where to locate the fence- or, "crowding" of the fence at some point in time or through the years, with or without agreement.

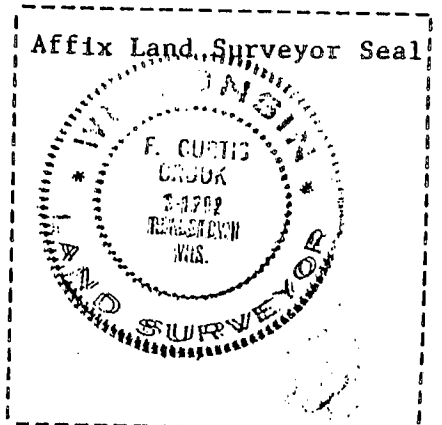
(f) Was the corner restored through acceptance of (1) an obliterated evidence location, or, (2) a found perpetuated location?

No previous location known to exist

(g&h) Was the corner reestablished through lost corner proportionate methods? If so, show the method, including the directions and distances to other public land survey corners used as evidence or used for proportioning in determining the corner location?



Note - the fence line near Center Section Projected South, across top of BLUFF would be 8.7' East of Computed Corner



(1) I, F. Curtis Crook (type or print name) certify that the corner location shown on this record was determined by me or under my direction and control and that this U.S. Public Land Survey Monument Record is correct and complete to the best of my knowledge and belief.

F. Curtis Crook

5-25-89