

# U. S. PUBLIC LAND SURVEY MONUMENT RECORD

**INSTRUCTIONS:** This record shall show the location of the corner and shall include all of the following nine elements (a through i).

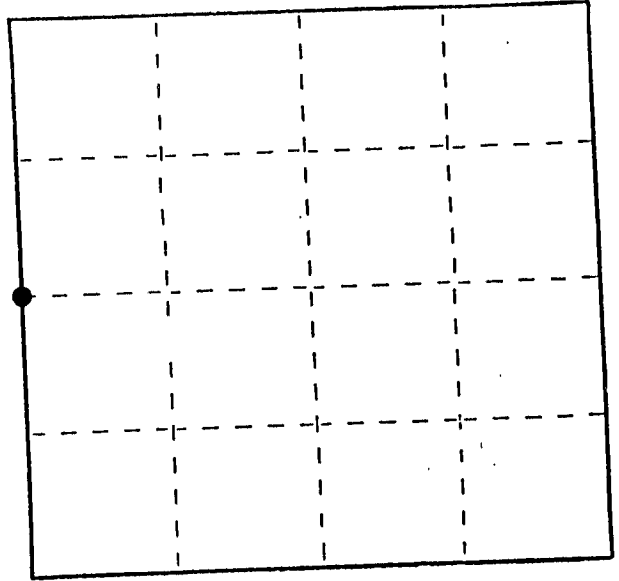
- (a) Identify the corner by reference to the U.S. public land survey system.  
 ● = Corner monument restored.

W1/4 Corner of Section 5

T 2 N R 3 W

Town of Potosi (South Part)

Grant Co., Wis.



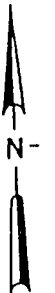
Section 5 T2N R3W

- (b) Describe any record evidence, monument evidence, occupational evidence, testimonial evidence or any other material evidence you considered, and whether the monument was found or placed. Originally set by Lucius Lyon in the 1st 1/4 of 1833, and found no record of retracement surveys, or surveys tied to this corner. Corner was established using EDM traverse of section and Corps of Engineers (War Department) map.

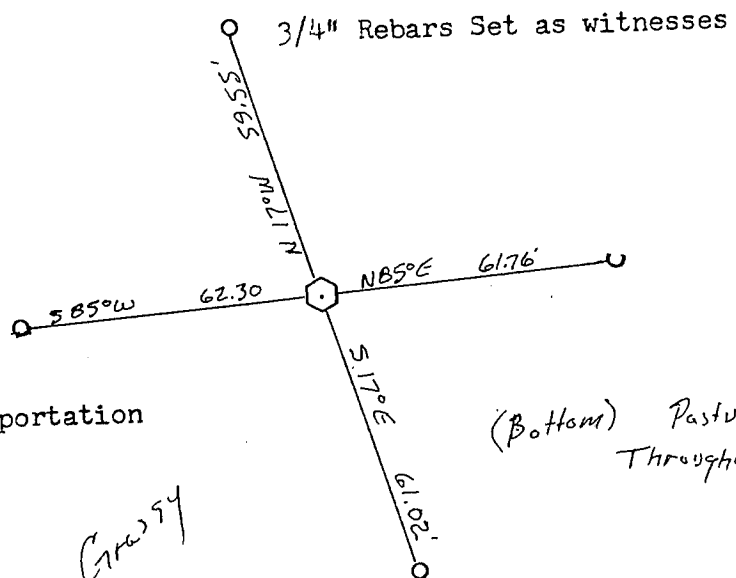
- (c) In the plan view drawing below, provide reference ties to at least 4 witness monuments, or, if the location is within a municipality, to at least 2 witness monuments. (Witness monuments shall be made of concrete, natural stone, iron or other equally durable material.) Describe witness monuments.

- (d) Show a plan view drawing depicting the relevant monuments and reference ties which is sufficient in detail to enable accurate relocation of the corner monument if the corner monument is disturbed. Indicate north.

Scale: 1" = 40'



(Bearings shown are for orientation purposes only)



SEP 13 1989

Corner is Wis. Dept. of Transportation  
 2" X 30" aluminum monument  
 (with sign and post)

(Bottom) Pasture Land  
 Throughout

All Grassy  
 (pasture)  
 Bottom  
 Land

P. 15

(e) Describe any material discrepancy between the location of the corner as restored or reestablished and the location of that corner as previously restored or reestablished by distance and direction. Show the discrepancy on the plan view drawing under (d), above. Show the distances between the corner as previously restored or reestablished and (1) the corner as restored or reestablished, and (2) to at least 2 of the witness monuments shown on the drawing in (d), above.

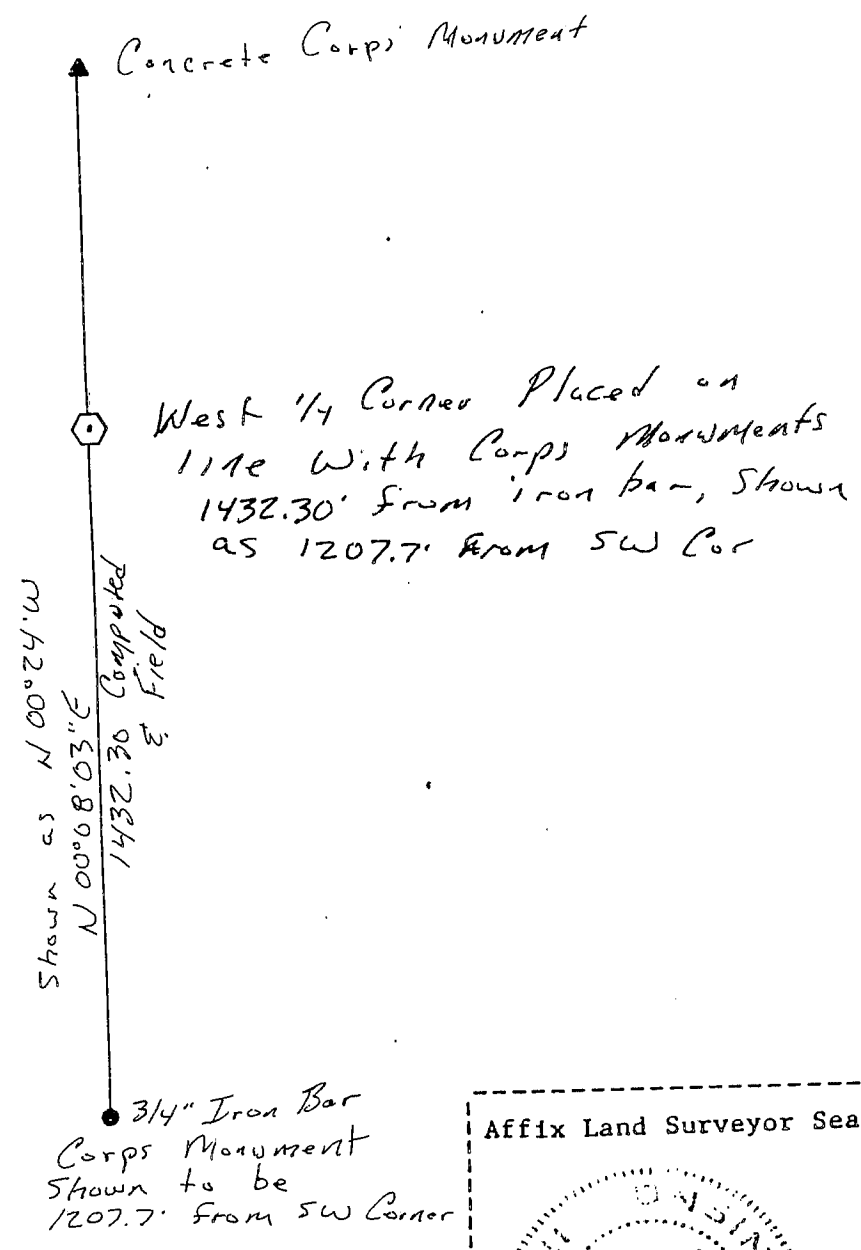
NONE

(f) Was the corner restored through acceptance of (1) an obliterated evidence location, or, (2) a found perpetuated location?

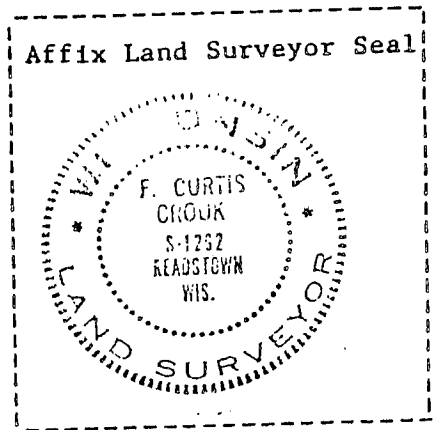
Obliterated evidence location

(g&h) Was the corner reestablished through lost corner proportionate methods? If so, show the method, including the directions and distances to other public land survey corners used as evidence or used for proportioning in determining the corner location?

No



Hand excavation showed no traces (flood land)  
 Very extensive search with locator showed no trace of iron bar shown by Corps of Engineers; Elevations do not indicate build up of fill from Corps contours; Farmers say this was also once fenced; no traces



(1) I, F. Curtis Crook certify that the corner location shown (type or print name) determined by me or under my direction and control and that this U.S. Public Land Survey Monument Record is correct and complete to the best of my knowledge and belief.

F. Curtis Crook 5-25-89  
 Sketch Added 6-6-89