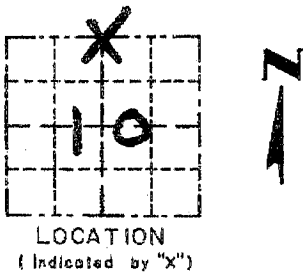


Survey Monument Record

CORNER NO.	<u>26</u>
SECTION	<u>10</u>
TOWN	<u>2N</u>
RANGE	<u>3W</u>

TYPE OF MONUMENT GRANT COUNTY Alum. Mon.
 STATE PLANE COORDINATES: N SET 12" BELOW SURFACE
 E _____

ELEVATION — M.S.L. DATUM: _____
 THETA ANGLE: _____
 FIELD BOOK: 95-01
 PAGE: 25



BASIS FOR MONUMENT LOCATION

(Use reverse side if necessary)

CORNER ORIGINALLY SET
IN 1833 B4 L40N

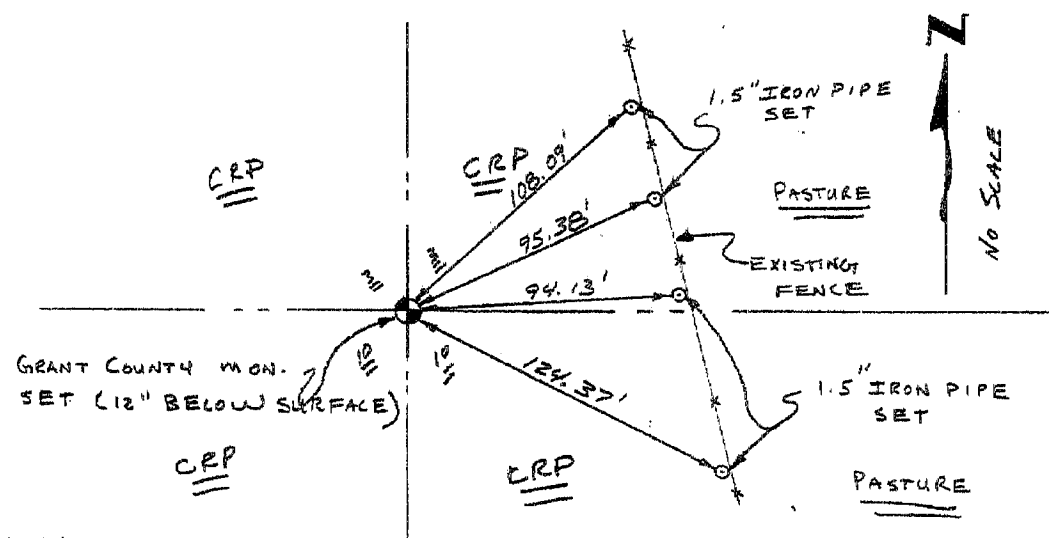
SEAL:

- CORNER RESET BASED ON PROPORTIONAL MEASUREMENTS BETWEEN THE NW / NE CORNERS OF SECTION 10.
- VERIFIED BY EDM TRAVERSE OF THE SECTION.

CERTIFIED CORRECT
Harry J. Rust
 Registered Land Surveyor
 DATE: 7-30-95

TIE SKETCH

Show at least three (3) ties and monument



REC'D MAY 7 1995

Survey Monument Record

CORNER NO.	<u>26</u>
SECTION	<u>10</u>
TOWN	<u>2N</u>
RANGE	<u>3W</u>

TYPE OF MONUMENT GRANT COUNTY Alum. Mon.

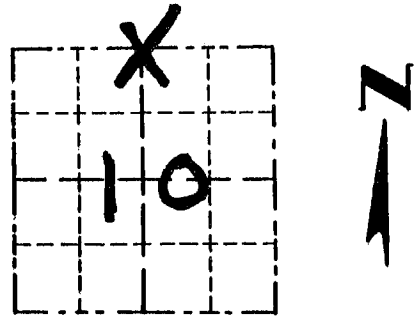
STATE PLANE COORDINATES: N SET 12" BELOW SURFACE
E _____

ELEVATION — M.S.L. DATUM: _____

THETA ANGLE: _____

FIELD BOOK: 95-01

PAGE 25



LOCATION
(Indicated by "X")

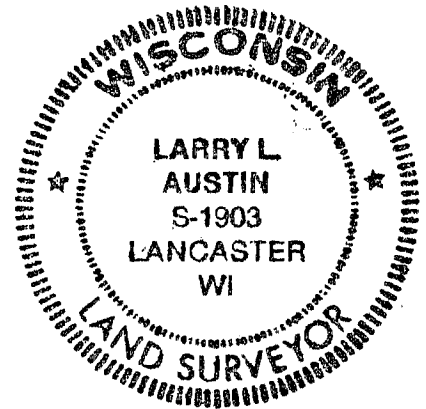
BASIS FOR MONUMENT LOCATION

(Use reverse side if necessary)

- CORNER ORIGINALLY SET
IN 1833 BY LYON

SEAL:

- CORNER RESET BASED ON
PROPORTIONAL MEASUREMENTS
BETWEEN THE NW / NE CORNERS
OF SECTION 10,



- VERIFIED BY EDM TRAVERSE
OF THE SECTION.

CERTIFIED CORRECT

Larry L. Austin
Registered Land Surveyor

DATE: 7-30-95

TIE SKETCH

Show at least three (3) ties and monument

