

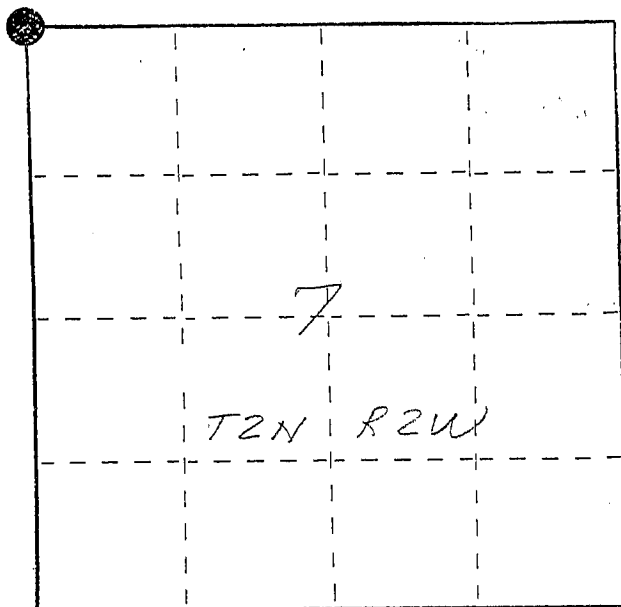
U. S. PUBLIC LAND SURVEY MONUMENT RECORD

INSTRUCTIONS: This record shall show the location of the corner and shall include all of the following nine elements (a through i).

(a) Identify the corner by reference to the U.S. public land survey system.

● = Corner monument restored.

NW corner Section 7
T2N R2W of the
4th P.M.
Town of Paris
Grant County, Wisconsin



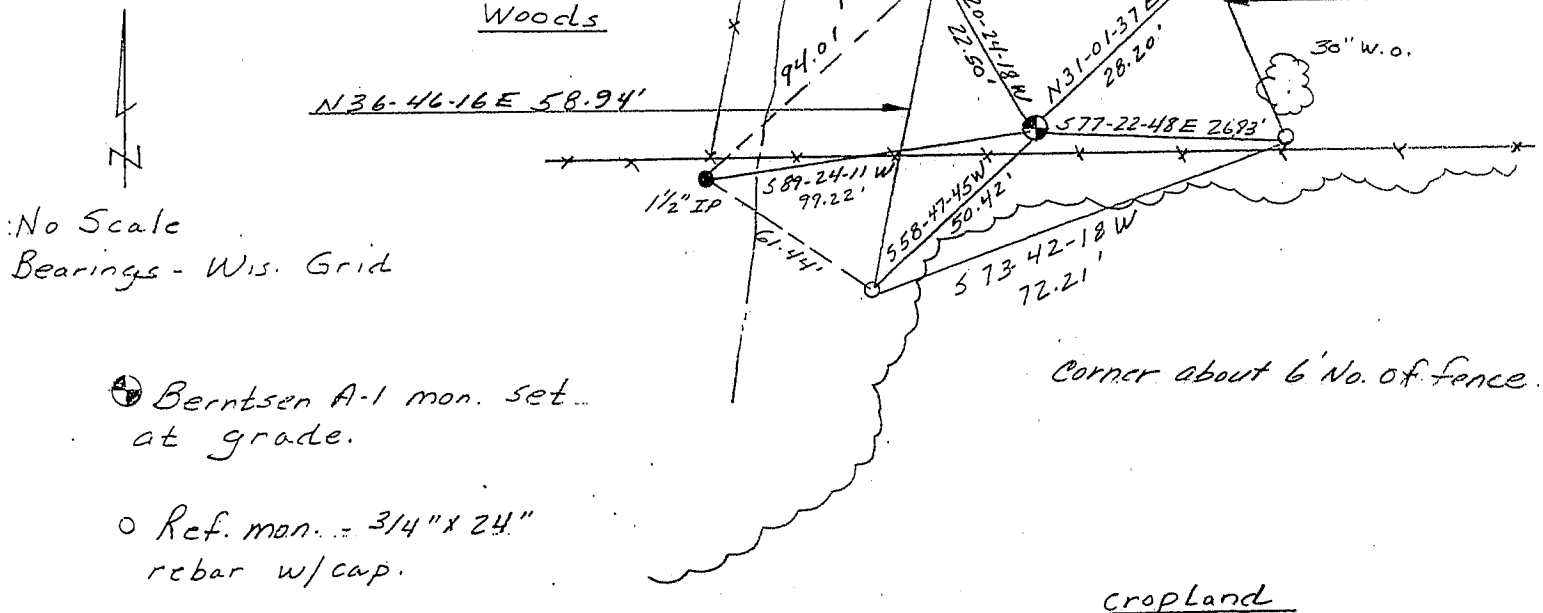
APR 27 1988

(b) Describe any record evidence, monument evidence, occupational evidence, testimonial evidence or any other material evidence you considered, and whether the monument was found or placed.

The south 1/4 corner of section 1, T2N R3W was held as reestablished. From it line was extended easterly through 40 corner marked with a 1" iron pipe set by Homer D. Ralph JR. and 1336.00' easterly of said iron pipe as recorded on his 1972 and 1974 surveys. NW corner of section 7-2-2 was set. The distance to the E of the creek to the north measures 404.6' and agrees closely with record distance of 396'.

(c) In the plan view drawing below, provide reference ties to at least 4 witness monuments, or, if the location is within a municipality, to at least 2 witness monuments. (Witness monuments shall be made of concrete, natural stone, iron or other equally durable material, ~~except wood~~.) Describe witness monuments.

(d) Show a plan view drawing depicting the relevant monuments and reference ties which is sufficient in detail to enable accurate relocation of the corner monument if the corner monument is disturbed. Indicate north.

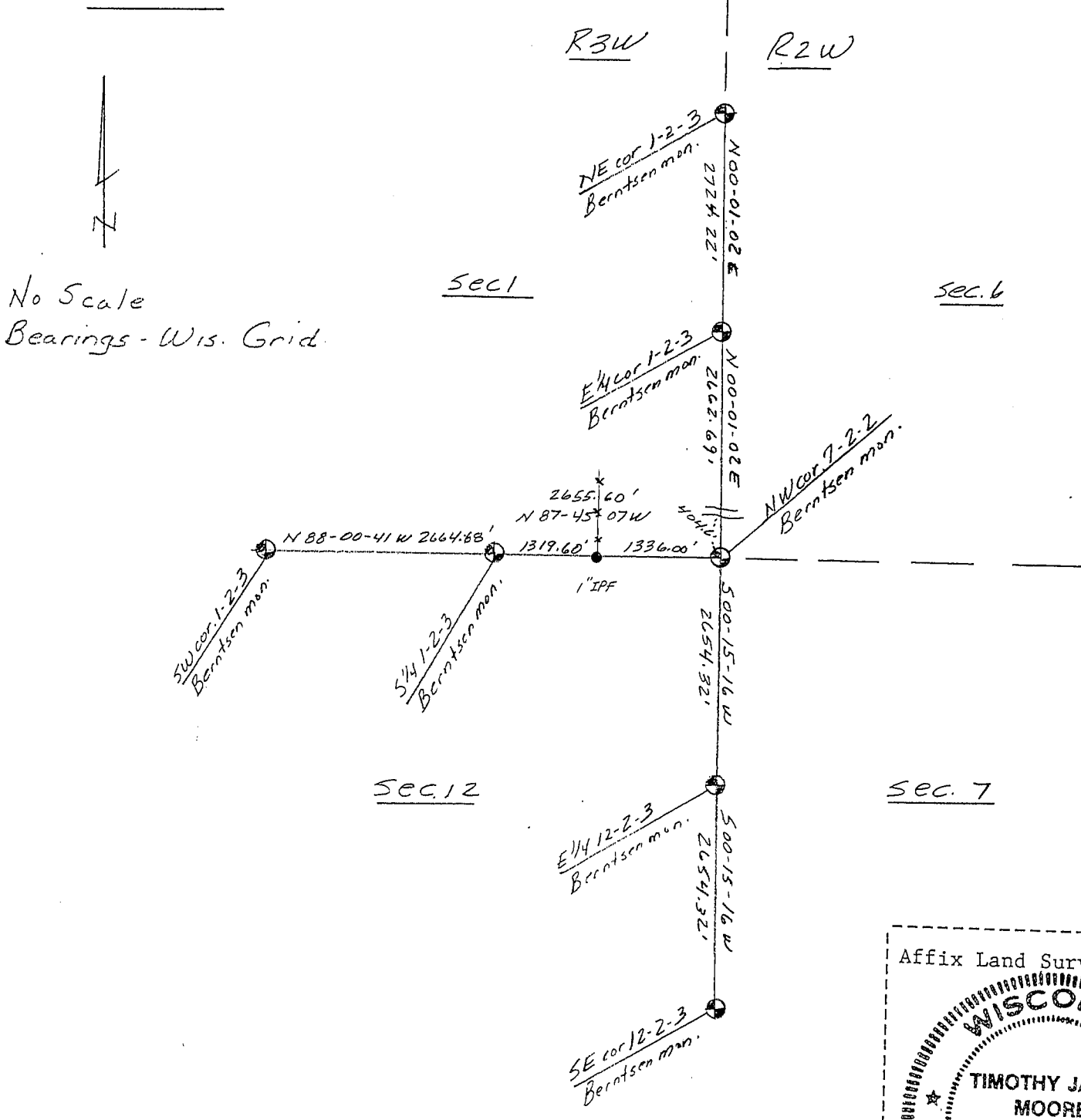


- (e) Describe any material discrepancy between the location of the corner as restored or reestablished and the location of that corner as previously restored or reestablished by distance and direction. Show the discrepancy on the plan view drawing under (d), above. Show the distances between the corner as previously restored or reestablished, and (1) the corner as restored or reestablished, and (2) to at least 2 of the witness monuments shown on the drawing in (d), above.

The iron to the west of the 1" iron marking the 40 corner measures 158.04' and is recorded as 148.80'. For this reason the iron was not used as shown on Homer Ralph's surveys. A 1 1/2" iron pipe was found at a fence corner to the west of the reestablished corner. There was no record of this iron that could be found. I believe the iron marks nothing more than an occupation corner and that fence was moved west

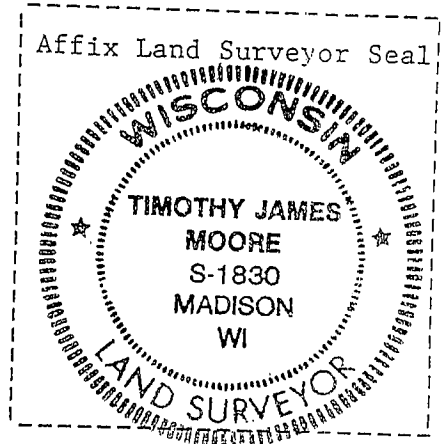
- (f) Was the corner restored through acceptance of (1) an obliterated evidence location, or, (2) a found perpetuated location?
to avoid steep ravine.

- (g&h) Was the corner reestablished through lost corner proportionate methods? If so, show the method, including the directions and distances to other public land survey corners used as evidence or used for proportioning in determining the corner location?



No Scale
Bearings - Wis. Grid.

(i) I, Timothy J. Moore
(type or print name) certify that the corner location shown on this record was determined by me or under my direction and control and that this U.S. Public Land Survey Monument Record is correct and complete to the best of my knowledge and belief.



Timothy J. Moore Signature
3-8-88