

U.S. PUBLIC LAND SURVEY MONUMENT RECORD - GRANT COUNTY, WI

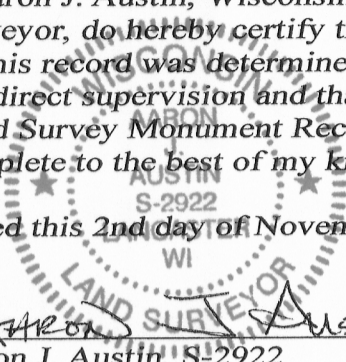
Section 36, Town 2 North Range 2 West, Town of Paris

CERTIFICATE:

I, Aaron J. Austin, Wisconsin Professional Land Surveyor, do hereby certify that the corner location on this record was determined by me and/or under my direct supervision and that this U.S. Public Land Survey Monument Record is correct and complete to the best of my knowledge and belief.

Dated this 2nd day of November, 2015.

Aaron J. Austin
 Aaron J. Austin, S-2922



● = CORNER LOCATION

HISTORY OF CORNER ESTABLISHMENT:

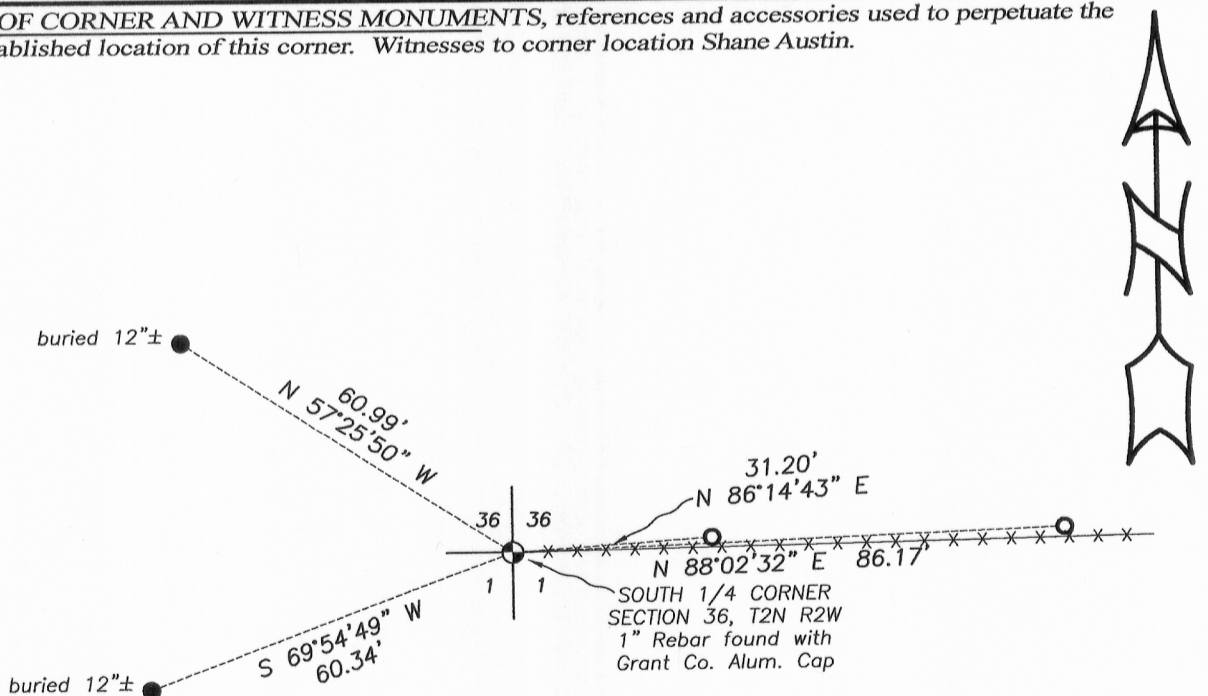
- 1833-Lucius Lyon set original corner.
- 1844-Wiltse tied to the corner on a Survey filed in Book A, Page 221.
- 1844-Wiltse tied to the corner on a Survey filed in Book A, Page 223.
- 1852-Overton tied to the corner on a Survey filed in Book B, Page 305.
- 1853-Everett tied to the corner on a Survey filed in Book B, Page 335.
- 1895-Sampson tied to the corner on a Survey filed in Book D, Page 254.
- 2000-Larry Austin tied to the corner on a Survey filed in Book 8, Page 8.
- 2000-Larry Austin prepared a Grant County Certified Land Corner record.
- 2002-Larry Austin tied to the corner on a Survey filed in Book 11, Page 95.
- 2002-Larry Austin tied to the corner on a Survey filed in Book 12, Page 14.
- 2009-Paulson tied to the corner on Surveys filed in Book 26, Pages 53-57.

DESCRIPTION OF CORNER EVIDENCE FOUND:

I found the 1" rebar with Grant County Aluminum Cap in place as set by Larry Austin. I also found 2 existing witness corners and set 2 new ones after I verified this location with E.D.M. and G.P.S. methods.

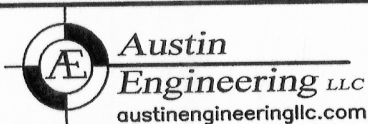
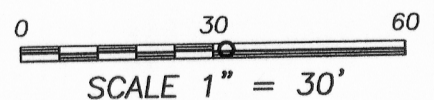
DESCRIPTION OF CORNER AND WITNESS MONUMENTS, references and accessories used to perpetuate the original or re-established location of this corner. Witnesses to corner location Shane Austin.

SKETCH:



LEGEND

- ⊕ Section Corner - as designated
- 1/2" x 12" rebar set with red plastic "TIE" cap
- 1/2" rebar found
- x-x- Approximate fence



4211 HWY 81 E, LANCASTER, WI 53813
 PHONE: 608-723-6363 FAX: 608-723-6702

JOB NO: 15s215
 H:\CRD\15s215
 H:\TIE\T2NR2W\122

FIELDBOOK: TDSR
 DRAWN BY: AJ AUSTIN
 CREW: SW AUSTIN

GRANT COUNTY CERTIFIED LAND CORNER

CORNER NUMBER 02

CERTIFICATE:

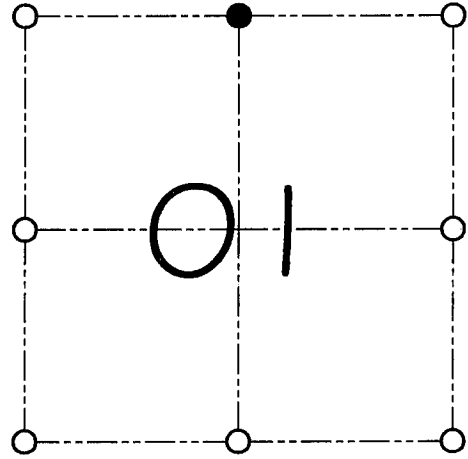
I, Larry L. Austin, do hereby certify that on the 20th day of September, 2000, I found no evidence of the North 1/4 corner of Section 1, Town 1 North, Range 2 West, of the 4th Principal Meridian, and I re-established said corner according to the Wisconsin statutes as shown and described hereon.

Dated this 22nd day of September, 2000

Larry L. Austin
Larry L. Austin S-1903



SEAL



● = CORNER LOCATION

NORTH 1/4 CORNER OF
SECTION 1, T 1 N R 2 W
TOWN OF JAMESTOWN

HISTORY OF ORIGINAL CORNER ESTABLISHMENT:

Corner was originally set in 1832 by Lucius Lyon.
Sam Wilts tied to the corner in 1844. In 1853 Overton found an ancient corner.

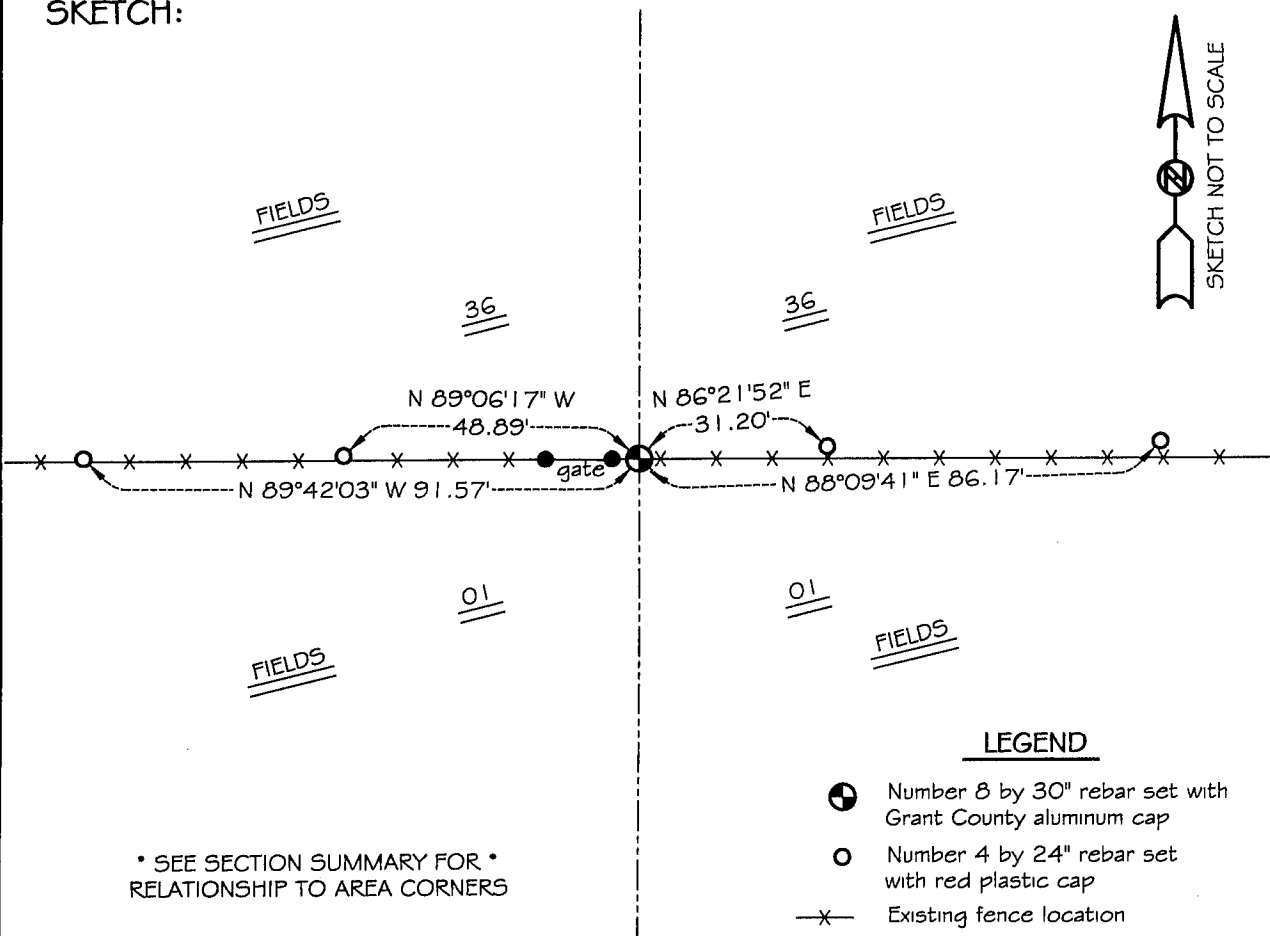
DESCRIPTION OF CORNER EVIDENCE FOUND:

I found no evidence to the previous locations. I reset the corner proportionately between the Northwest and Northeast corner. Verified this location using E.D.M. & G.P.S. methods.

DESCRIPTION OF CORNER AND WITNESS MONUMENTS, references and accessories used to perpetuate the original or re-established location of this corner

WITNESS TO THE CORNER LOCATION: SHELBY BLINDERT & BOBBY SEDGWICK

SKETCH:



LEGEND

- Number 8 by 30" rebar set with Grant County aluminum cap
- Number 4 by 24" rebar set with red plastic cap
- x- Existing fence location