

# U.S. PUBLIC LAND SURVEY MONUMENT RECORD - GRANT COUNTY, WI

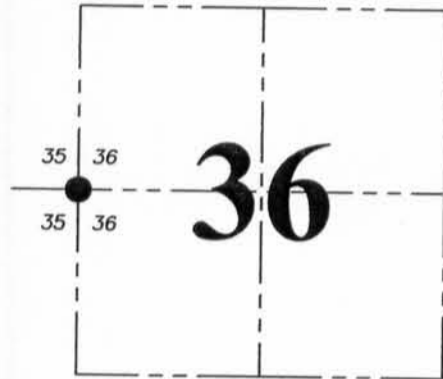
Section 36, Town 2 North Range 2 West, Town of Paris

**CERTIFICATE:**

I, Aaron J. Austin, Wisconsin Professional Land Surveyor, do hereby certify that the corner location on this record was determined by me and/or under my direct supervision and that this U.S. Public Land Survey Monument Record is correct and complete to the best of my knowledge and belief.

Dated this 2nd day of November, 2015.

*Aaron J. Austin*  
 Aaron J. Austin, S-2922



● = CORNER LOCATION

**HISTORY OF CORNER ESTABLISHMENT:**

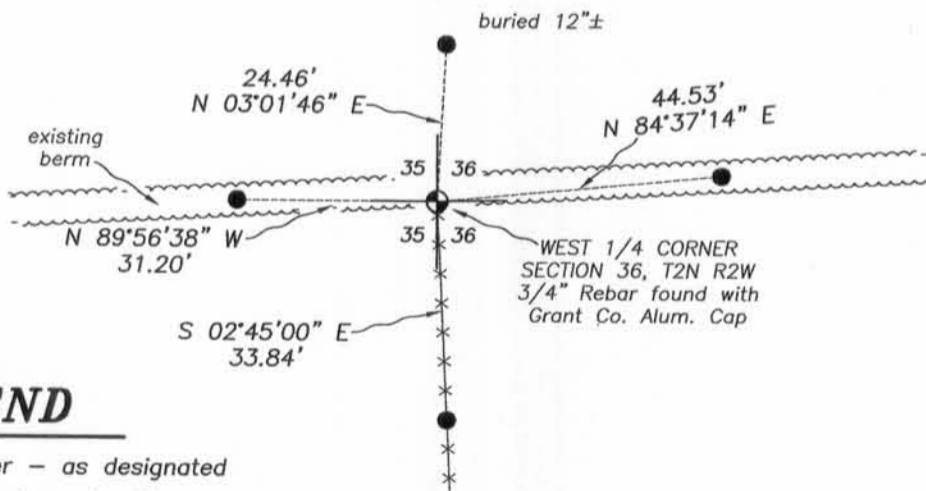
- 1833-Lucius Lyon set original corner.
- 1844-Wiltse tied to the corner on a Survey filed in Book A, Page 223.
- 1844-Freeman tied to the corner on a Survey filed in Book A, Page 247.
- 1852-Overton tied to the corner on a Survey filed in Book B, Page 305.
- 1993-Burbach reset the corner on a Survey filed in Book S, Page 83 and prepared a U.S. Public Land Survey Monument Record for the corner.
- 1998-Goebel tied to the corner on a Survey filed in Book 3, Page 76.
- 2002-Larry Austin tied to the corner on a Survey filed in Book 12, Page 14.
- 2004-Kramer tied to the corner on C.S.M. No. 1047.
- 2005-Larry Austin tied to the corner on a Survey filed in Book 16, Page 79.
- 2006-Larry Austin tied to the corner on a Survey filed in Book 20, Page 20.
- 2009-Paulson tied to the corner on Surveys filed in Book 26, Pages 53-57.
- 2009-Paulson tied to the corner on Surveys filed in Book 26, Pages 49-52.

**DESCRIPTION OF CORNER EVIDENCE FOUND:**

I found Burbach's 3/4" rebar in place and set a Grant County Aluminum Cap on the rebar after verifying it's location by E.D.M. and G.P.S. methods. No witness corners were recovered and the fence to the North and East as shown on Burbach's tie sheet has been removed. I set 4 new witness corners as shown hereon.

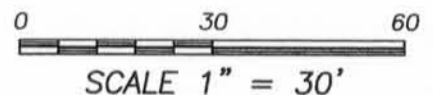
**DESCRIPTION OF CORNER AND WITNESS MONUMENTS,** references and accessories used to perpetuate the original or re-established location of this corner. Witnesses to corner location Shane Austin.

**SKETCH:**



**LEGEND**

- ⊙ Section Corner - as designated
- 1/2" x 12" rebar set with red plastic "TIE" cap
- x-x- Approximate fence



4211 HWY 81 E, LANCASTER, WI 53813  
 PHONE: 608-723-6363 FAX: 608-723-6702

JOB NO: 15s215  
 H:\CRD\15s215  
 H:\TIE\T2NR2W\119

FIELDBOOK: TDSR  
 DRAWN BY: AJ AUSTIN  
 CREW: SW AUSTIN

# U.S. PUBLIC LAND SURVEY MONUMENT RECORD

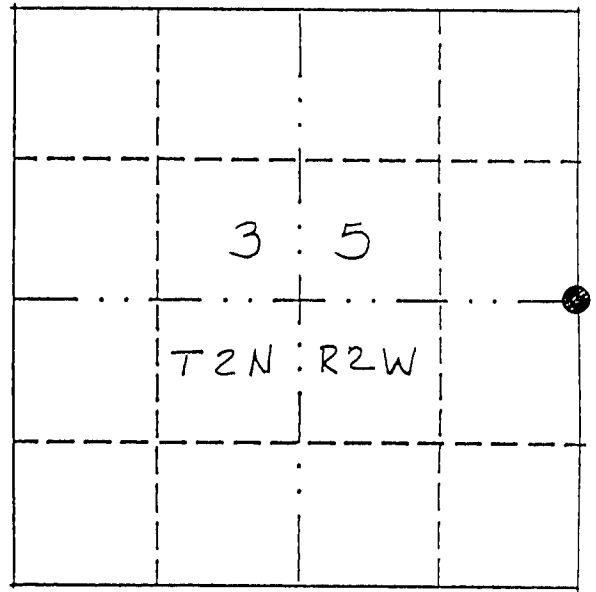
THIS RECORD SHALL SHOW THE LOCATION OF THE CORNER AND SHALL INCLUDE ALL OF THE FOLLOWING NINE ELEMENTS (A THROUGH I).

JUN 16 1990

1117 1 7 1997

(a) Identify the corner by reference to the U.S. public land survey system.

EAST 1/4 CORNER  
SECTION 35, T2N-R2W  
PARIS TWP.  
GRANT COUNTY, WI



● = corner monument restored.

(b) Describe any record evidence, monument evidence, occupational evidence, testimonial evidence or any other material evidence you considered, and whether the monument was found or placed.

Monument was placed at existing fence intersection after EDM traverse of area.

(c) In the plan view drawing below, provide reference ties to at least four witness monuments, or, if the location is within a municipality, to at least two witness monuments. (Witness monuments shall be made of concrete, natural stone, iron or other equally durable material.) Describe witness monuments.

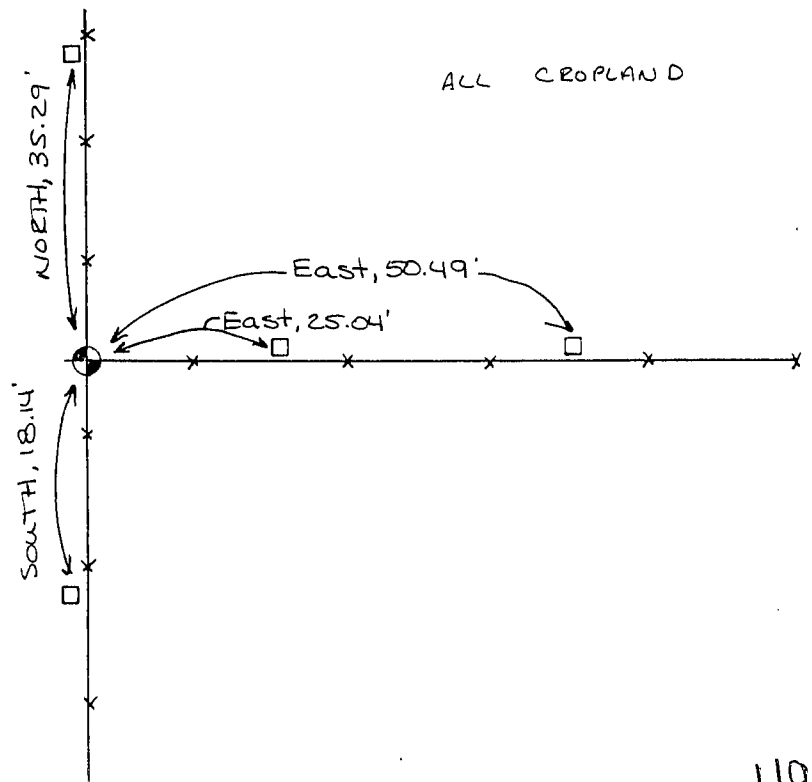
(d) Show a plan view drawing depicting the relevant monuments and reference ties which is sufficient in detail to enable accurate relocation of the corner monument if the corner monument is disturbed. Indicate north.



NOT TO SCALE

● = Section Corner Mon.  
Set 3/4" x 24" Rebar

□ = Set 1" Pipe



(e) Describe any material discrepancy between the location of the corner as restored or reestablished and the location of that corner as previously restored or reestablished by distance and direction. Show the discrepancy on the plan view drawing under (d), above. Show the distances between the corner as previously restored or reestablished and (1) the corner as restored or reestablished, and (2) to at least two of the witness monuments shown on the drawing in (d), above.

NONE

(f) Was the corner restored through acceptance of (1) an obliterated evidence location, or (2) a found perpetuated location?

1.

(g) & (h) Was the corner reestablished through lost corner proportionate methods? If so, show the method, including the directions and distances to other public land survey corners used as evidence or used for proportioning in determining the corner location?

No.

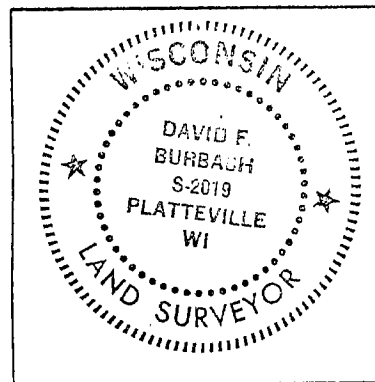
(i) I, DAVID F. BURBACH

(type or print name) certify that the corner location shown on this record was determined by me or under my direction and control and that this U.S. Public Land Survey Monument Record is correct and complete to the best of my knowledge and belief.

David F. Burbach

6-3-93

Date



offix land surveyor seal