

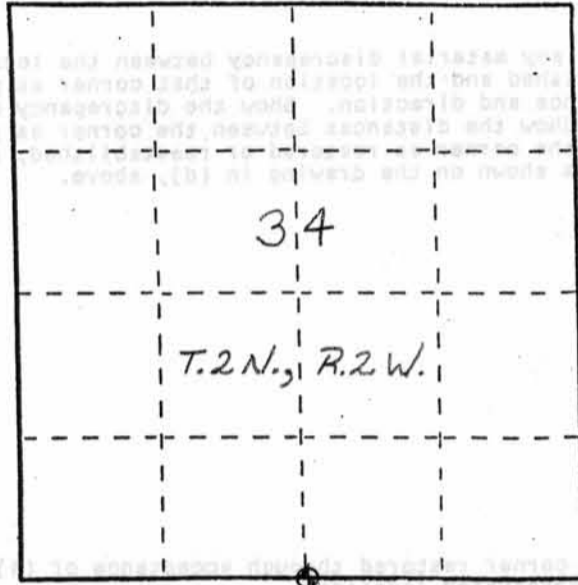
U. S. PUBLIC LAND SURVEY MONUMENT RECORD

INSTRUCTIONS: This record shall show the location of the corner and shall include all of the following nine elements (a through i).

(a) Identify the corner by reference to the U.S. public land survey system.

○ = Corner monument restored.

The South Quarter Corner of Section 34, Town 2 North, Range 2 West, Paris Twp., Grant County, Wisconsin.



(b) Describe any record evidence, monument evidence, occupational evidence, testimonial evidence or any other material evidence you considered, and whether the monument was found or placed.

I found and accepted the Grant County aluminum cap and rebar noted by Carl M. Sandsnes on a tie sheet dated 10/30/1991. See note regarding Sandsnes' three easterly ties.

(c) In the plan view drawing below, provide reference ties to at least 4 witness monuments, or, if the location is within a municipality, to at least 2 witness monuments. (Witness monuments shall be made of concrete, natural stone, iron or other equally durable material) Describe witness monuments.

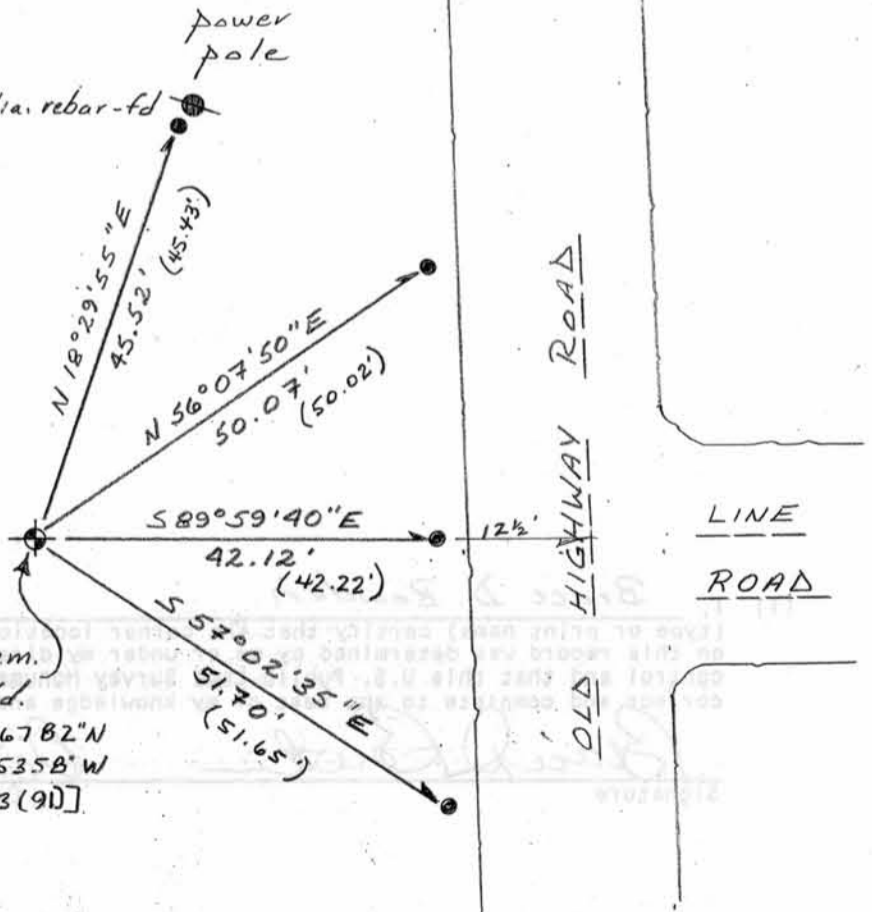
(d) Show a plan view drawing depicting the relevant monuments and reference ties which is sufficient in detail to enable accurate relocation of the corner monument if the corner monument is disturbed. Indicate north.



Note: All three of the easterly ties had been hit by plows. I straightened the rebar and placed them in the original holes. Countersunk rebar 0.5' ±.

Grant County alum. cap and rebar - fd.
 42° 35' 40.26782" N
 90° 35' 34.45358" W
 [NAD83(91)]

SCALE: 1" = 20'



U. S. PUBLIC LAND SURVEY MONUMENT RECORD

(e) Describe any material discrepancy between the location of the corner as restored or reestablished and the location of that corner as previously restored or reestablished by distance and direction. Show the discrepancy on the plan view drawing under (d), above. Show the distances between the corner as previously restored or reestablished and (1) the corner as restored or reestablished, and (2) to at least 2 of the witness monuments shown on the drawing in (d), above.

None.

(f) Was the corner restored through acceptance of (1) an obliterated evidence location, or, (2) a found perpetuated location?

A found perpetuated location.

(g&h) Was the corner reestablished through lost corner proportionate methods? If so, show the method, including the directions and distances to other public land survey corners used as evidence or used for proportioning in determining the corner location?

No.

Affix Land Surveyor Seal



(i) I, Bruce D. Bowden (type or print name) certify that the corner location shown on this record was determined by me or under my direction and control and that this U.S. Public Land Survey Monument Record is correct and complete to the best of my knowledge and belief.

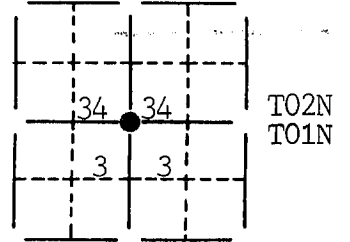
Bruce D. Bowden
Signature

Oct 5, 2009
Date

U. S. PUBLIC LAND SURVEY MONUMENT RECORD FOR GRANT COUNTY, WISCONSIN

Note: This form is intended and designed to fulfill all requirements of Wisconsin Administrative Code, Chapter A-E7.08, U.S. Public Land Survey Monument Record (3) (a) (b) (c) (d) (e) (f) (g) (h) (i). Use additional sheet if necessary.

(a) The section, one quarter corner common to sections 34, 3,
 Township(s) 02-01 N, Range(s) 02 W
 State plane coordinates: N 217,252.6693
 E 1,840,371.8395

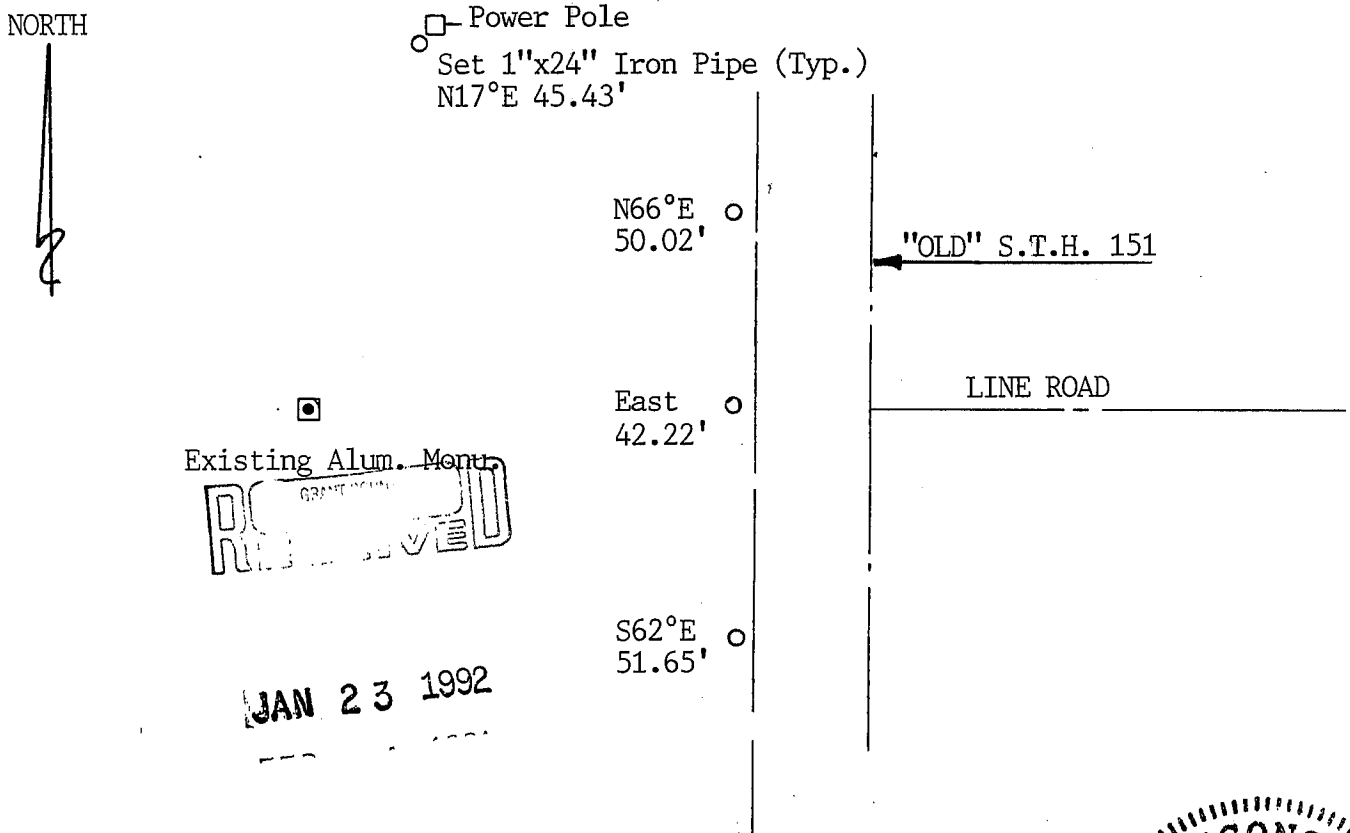


(b) (f) (g) (h) Description of monument found at this corner and if it was accepted, state all evidence (material, testimonial, occupational, plats, records, other monuments) used as a basis for accepting. If not accepted or nothing was found, state evidence used as basis for establishing location and what was set. If reestablished through lost corner proportionate methods, indicate all monuments, distances and directions used.

Existing Alum. Cap Monument at the centerline of Line Road & 60'± west of the centerline of "old" S.T.H. 151.

249-0171
2445 DARWIN RD
AYRES ASSOCIATES

(c) (d) (e) Plan view of corner with ties to at least 4 witness monuments. If in disagreement with previously established corner, show the distances between the two corners and also indicate ties to disputed corner.



(i) I certify that the corner location on this record was determined by me or under my direction and control and that this U.S. Public Land Survey Monument Record is correct and complete to the best of my knowledge and belief.

[Signature] Oct 30, 1991
 Signature Date



Filed for record in Grant County Surveyor's Office on _____

126