

GRANT COUNTY

REC'D MAR 8 1996

Survey Monument Record

TYPE OF MONUMENT 2" IRON PIPE
 STATE PLANE COORDINATES: N _____
 E _____
 ELEVATION — M.S.L. DATUM: _____
 THETA ANGLE: _____
 FIELD BOOK: 9407
 PAGE: 30

CORNER NO. 128
 SECTION 33
 TOWN 2N
 RANGE 2W

BASIS FOR MONUMENT LOCATION

(Use reverse side if necessary)

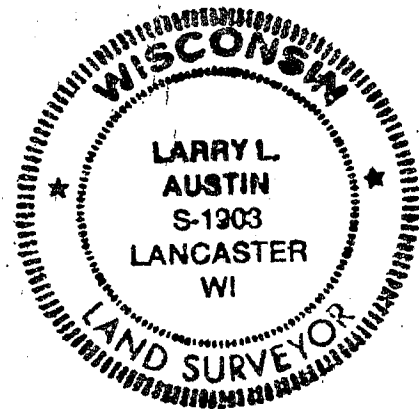
Show info such as: History of corner, with reference to Vol. and pg., dates, surveyor; exact description of monument replaced; if location computed, by taped or EDM traverse; landowner, remarks, etc.



LOCATION
 (Indicated by "X")



SEAL:



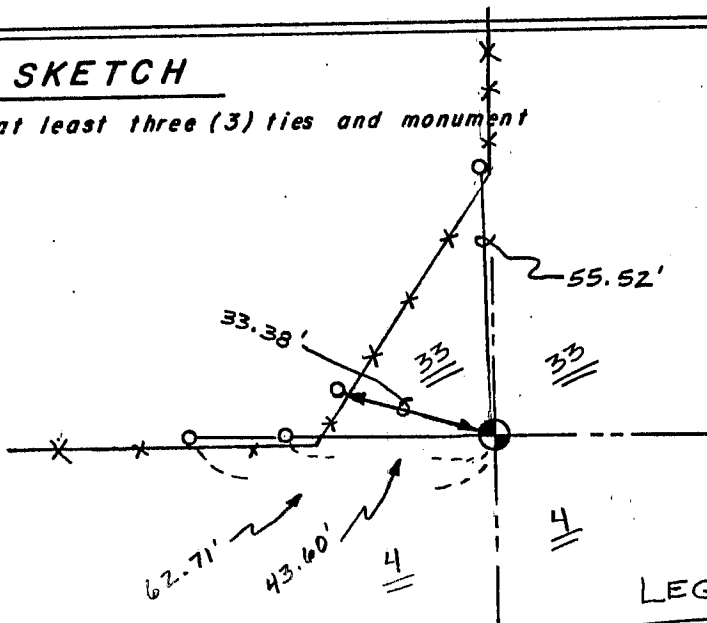
CORNER ORIGINALLY SET 1832
 BY L. LYON; FOUND A 2"
 IRON PIPE AT OCCUPIED LOCATION;
 I ACCEPTED ITS LOCATION AFTER
 EDM TRAVERSE OF THE AREA

CERTIFIED CORRECT

Larry L. Austin
 Registered Land Surveyor
 DATE: 4/10/95

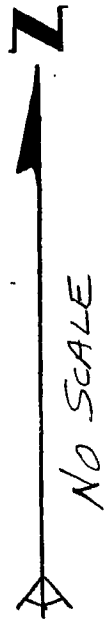
TIE SKETCH

Show at least three (3) ties and monument



LEGEND

- ⊕ 2" IRON PIPE FOUND
- 1" x 12" IRON PIPE SET
- X X EXISTING FENCE

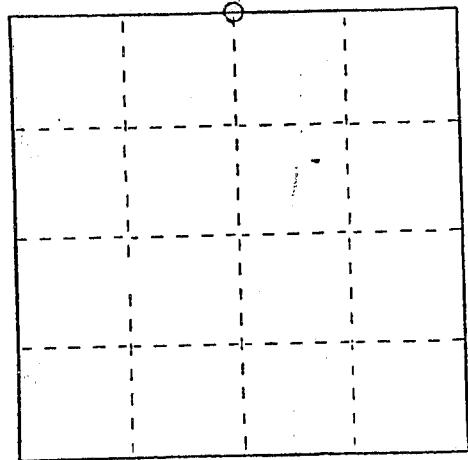


U. S. PUBLIC LAND SURVEY MONUMENT RECORD

INSTRUCTIONS: This record shall show the location of the corner and shall include all of the following nine elements (a through i).

- (a) Identify the corner by reference to the U.S. public land survey system.
 ○ = Corner monument restored.

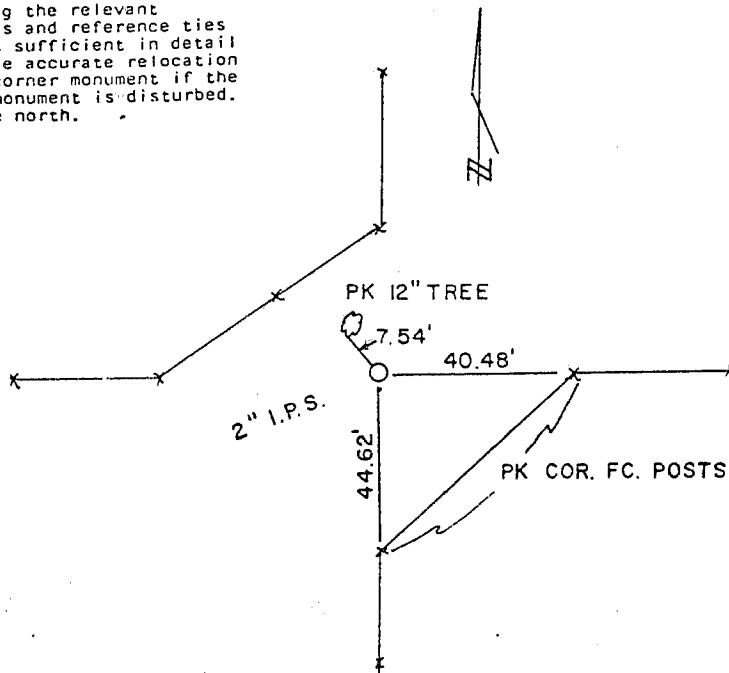
North $\frac{1}{2}$ corner
 Section 4 Town 1 North
 Range 2 West ~~Town of Jamestown~~
 Grant County ~~Wisconsin~~



- (b) Describe any record evidence, monument evidence, occupational evidence, testimonial evidence or any other material evidence you considered, and whether the monument was found or placed.
 Corner set by existing physical evidence

- (c) In the plan view drawing below, provide reference ties to at least 4 witness monuments, or, if the location is within a municipality, to at least 2 witness monuments. (Witness monuments shall be made of concrete, natural stone, iron or other equally durable material.)
 Describe witness monuments.

- (d) Show a plan view drawing depicting the relevant monuments and reference ties which is sufficient in detail to enable accurate relocation of the corner monument if the corner monument is disturbed. Indicate north.



(e) Describe any material discrepancy between the location of the corner as restored or reestablished and the location of that corner as previously restored or reestablished by distance and direction. Show the discrepancy on the plan view drawing under (d), above. Show the distances between the corner as previously restored or reestablished and (1) the corner as restored or reestablished, and (2) to at least 2 of the witness monuments shown on the drawing in (d), above.

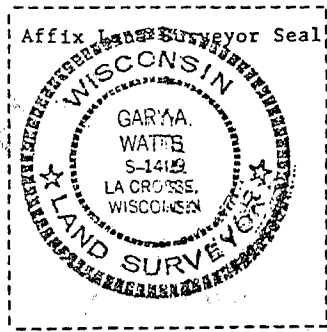
None

(f) Was the corner restored through acceptance of (1) an obliterated evidence location, or, (2) a found perpetuated location?

Obliterated evidence

(g&h) Was the corner reestablished through lost corner proportionate methods? If so, show the method, including the directions and distances to other public land survey corners used as evidence or used for proportioning in determining the corner location?

No



(i) I, GARY A. WATTS, Registered Land Surveyor, hereby certify that the corner location shown on this record was determined by me or under my direction and control and that this U.S. Public Land Survey Monument Record is correct and complete to the best of my knowledge and belief.

Gary A. Watts
Signature

4/22/03
Date