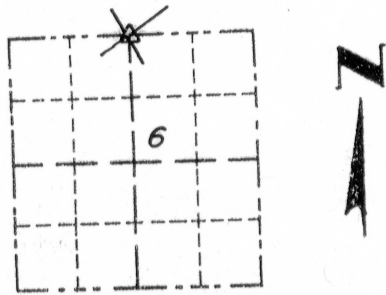


GRANT COUNTY

Survey Monument Record

CUT "X" IN CONCRETE OF N 1/4
 TYPE OF MONUMENT, CATTLE CROSSING
 STATE PLANE COORDINATES: N _____
 E _____
 ELEVATION — M.S.L. DATUM: _____
 THETA ANGLE: _____
 FIELD BOOK: _____
 PAGE _____

CORNER NO. 12
 SECTION 6
 TOWN 1 NORTH
 RANGE 2 WEST



LOCATION
 (Indicated by "X")

BASIS FOR MONUMENT LOCATION

(Use reverse side if necessary)

Show info such as: History of corner, with reference to Vol. and pg., dates, surveyor; exact description of monument replaced; if location computed, by taped or EDM traverse; landowner, remarks, etc.

SEAL:



NORTH 1/4 CORNER OF SECTION 6, T 1 N, R 2 W. CORNER LOCATION WAS COMPUTED AT THE LOCATION DETERMINED BY LARRY AUSTIN AS SHOWN ON CERTIFIED SURVEY MAP NO. 653, RECORDED AS DOCUMENT NO. 619576, IN VOLUME 5 OF CERTIFIED SURVEY MAPS, PAGE 110, IN THE OFFICE OF THE GRANT COUNTY REGISTER OF DEEDS. CUT "X" IN SOUTH CORNER OF CONCRETE FOR CATTLE CROSSING FOR PRIVATE DRIVEWAY. CORNER WAS VERIFIED BY GPS AND EDM MEASUREMENTS FROM AUSTIN EAST AND CENTER CORNERS BY PLATTED BEARINGS AND DISTANCES.

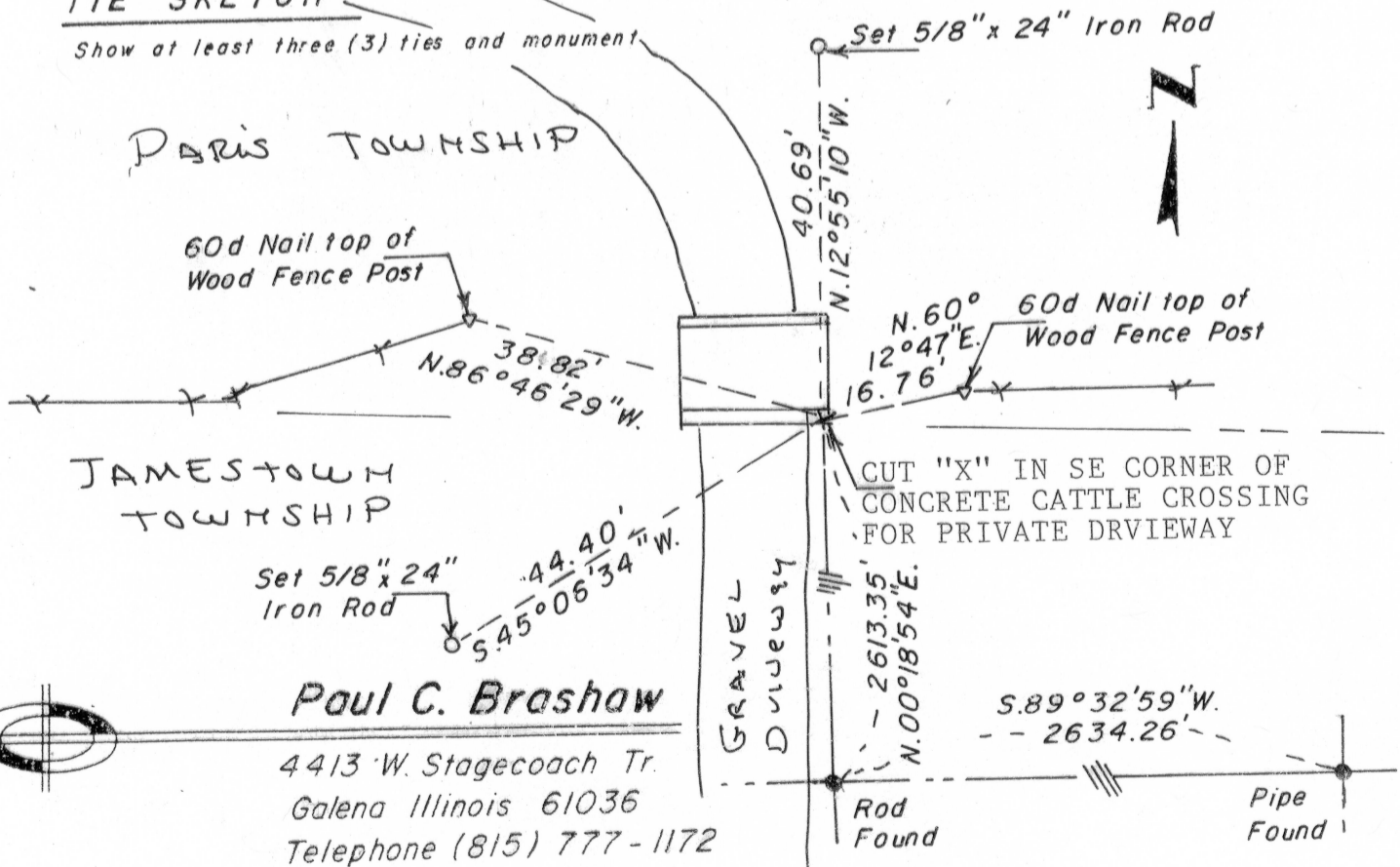
CERTIFIED CORRECT

Paul C. Brashaw
 Registered Land Surveyor

DATE: APRIL 17, 2010

TIE SKETCH

Show at least three (3) ties and monument



Paul C. Brashaw
 4413 W. Stagecoach Tr.
 Galena Illinois 61036
 Telephone (815) 777-1172

APR 20 2010