

GRANT COUNTY

Survey Monument Record

TYPE OF MONUMENT, Set 1" x 30" Aluminum Capped Grant County Monument

STATE PLANE COORDINATES: N _____
E _____

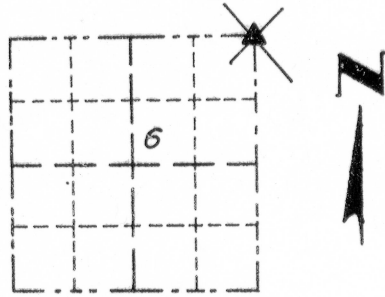
ELEVATION — M.S.L. DATUM: _____

THETA ANGLE: _____

FIELD BOOK: _____

PAGE _____

CORNER NO. 11
NE SECTION 6
TOWN 1 NORTH
RANGE 2 WEST



LOCATION
(Indicated by "X")

BASIS FOR MONUMENT LOCATION

(Use reverse side if necessary)

Show info such as: History of corner, with reference to Vol. and pg., dates, surveyor; exact description of monument replaced; if location computed, by taped or EDM traverse; landowner, remarks, etc.

SEAL:

CORNER LOCATED WAS DETERMINED BY USING LARRY AUSTIN NORTH 1/4 CORNER LOCATION, WITH EXISTING MONUMENT RECORDED AS SUPPOSEDLY AT THE SOUTHEAST CORNER OF SECTION 31-2-2W, RECORDED BY STANLEY J. KING, S-2001. FOUND NO EVIDENCE OF THE CORNER OR ITS WITNESS. SET 1" x 30" GRANT COUNTY ALUMINUM MONUMENT WITH COUNTY CAP. CORNER LOCATION WILL FITS EXISTING FENCES TO THE SOUTH AND WEST WITH DEED EXCEPTION OF 33' AS RECORDED AS DOCUMENT NO. 694709, IN VOLUME 1123, PAGES 344 AND 345, IN THE OFFICE OF THE GRANT COUNTY REGISTER OF DEEDS. VERIFIED THIS LOCATION USING EDM AND GPS MEASUREMENTS.



CERTIFIED CORRECT

Paul C. Brashaw

Registered Land Surveyor No. S-1509

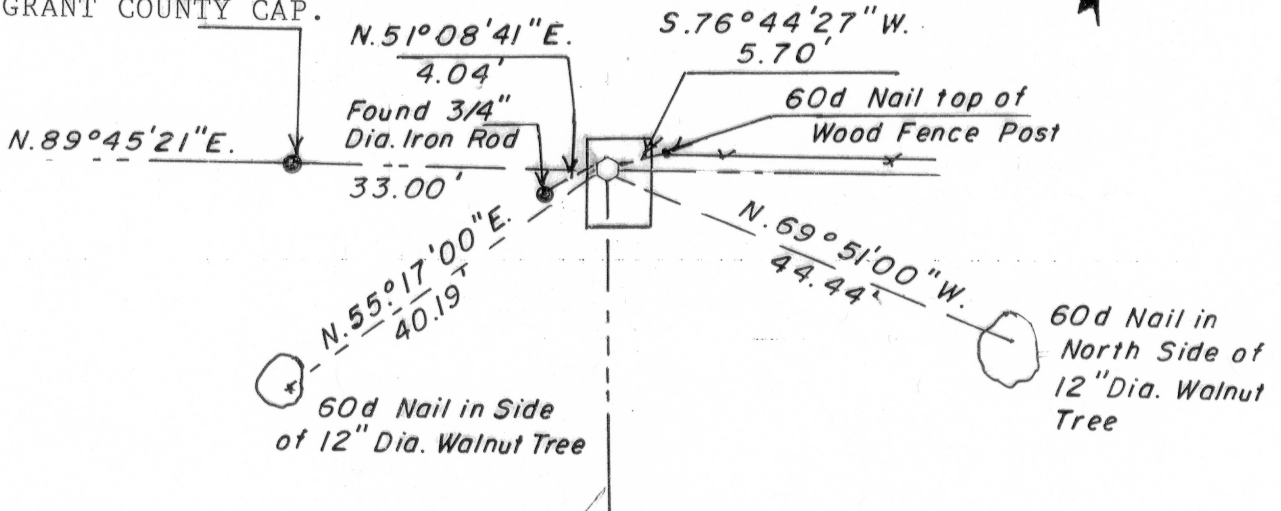
DATE: April 17, 2010

TIE SKETCH

Show at least three (3) ties and monument

FOUND STANLEY J. KING'S CORNER. 3/4" DIA IRON ROD WITH GRANT COUNTY CAP.

SET 1" x 30" GRANT COUNTY ALUMINUM MONUMENT WITH CAP AT NE CORNER OF SECTION 6 T 1 N, R 2 W



Paul C. Brashaw

4413 W. Stagecoach Tr. Galena Illinois 61036

Telephone (815) 777-1172

APR 20 2010

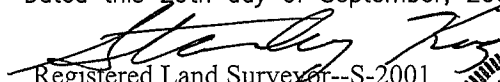
CERTIFIED LAND CORNER

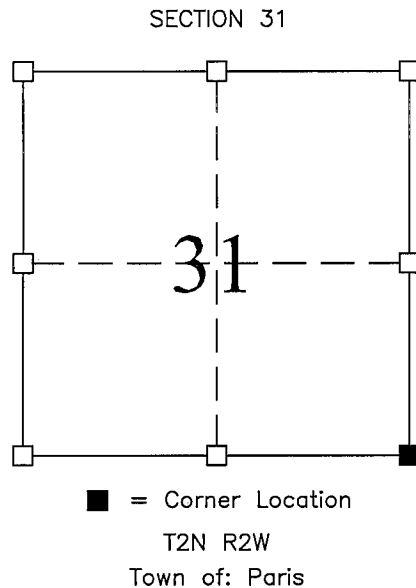
STATE OF WISCONSIN COUNTY OF GRANT

CERTIFICATE

I, Stanley King, do hereby certify that on the 29th day of September, 2004, I found no evidence of the South East corner of SECTION 31, T2N, R2W, Fourth Principal Meridian, and I re-established said corner according the Wisconsin Statutes as shown and described hereon.

Dated this 29th day of September, 2004


 Registered Land Surveyor--S-2001
 Title



Seal:

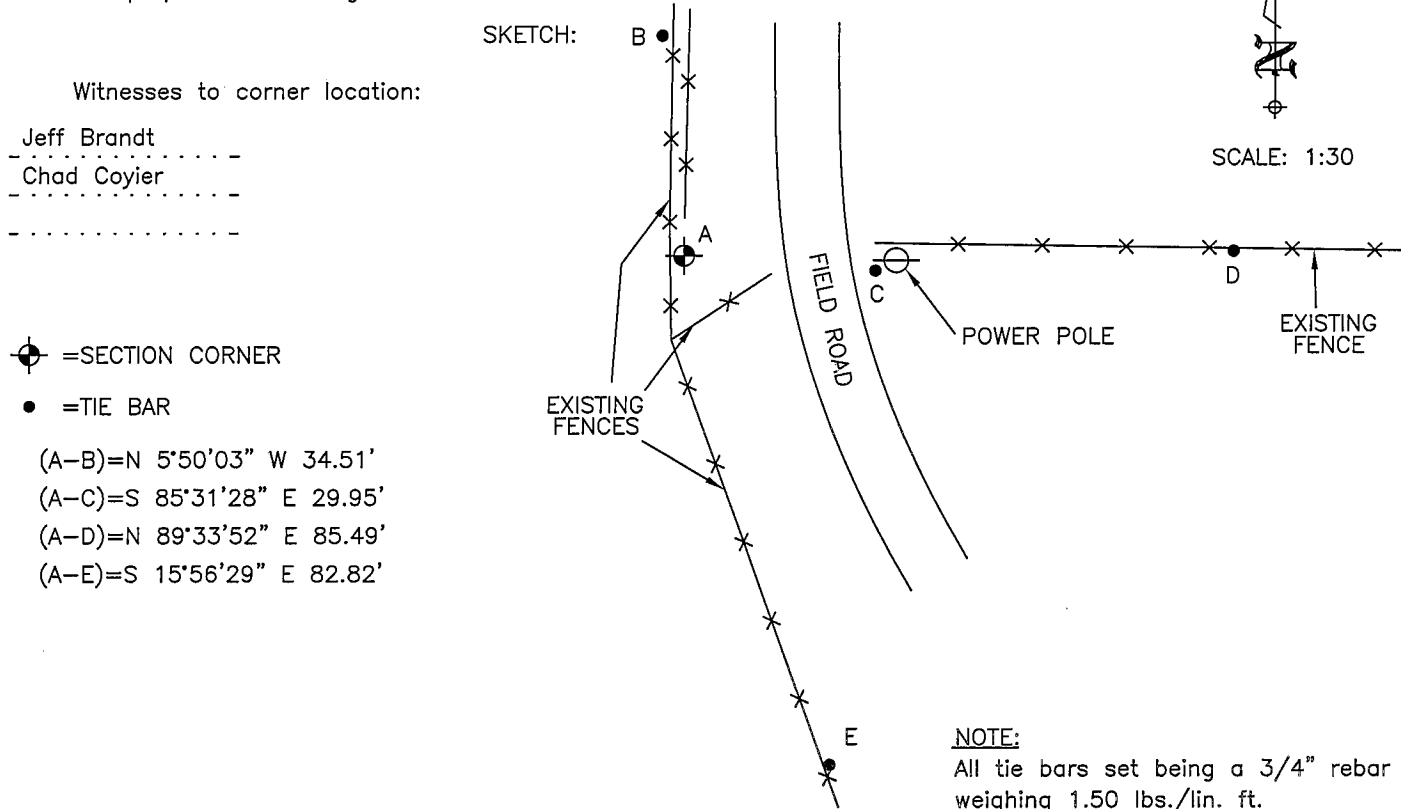
History of original corner establishment:

DIVISION OF SECTION
ORIGINAL CORNER SET IN 1833 BY LUCIUS LYON

Description of corner evidence found:

FOUND NO EVIDENCE OF THE CORNER OR ITS WITNESS-- SET A REBAR WEIGHING A MIN. OF 1.50 LBS. PER LINEAL FOOT WITH GRANT COUNTY MONUMENT CAP. CORNER SET IN EXISTING FENCE TO EAST AND NORTH. VERIFIED LOCATION USING EDM AND GPS TRAVERSE.

Description of corner and witness monuments, references, and accessories used to perpetuate the original or re-established location of this corner.



SURVEY CONTROL ORDER



BLACKHAWK
 ENGINEERING, Ltd.
 Civil & Municipal Engineers and Building Design
 2 INSIGHT DRIVE OFFICE PHONE: (608) 348-4433
 PLATTEVILLE, WISCONSIN FAX: (608) 348-4449

Horizontal:	
Vertical:	

SURVEY CREW: JJB, CDC
 DRAWN BY: JJB
 DATE: 9/23/04
 FILE: f:\acad12\2004\04-071\tiesht.dwg