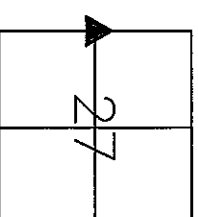


UNITED STATES PUBLIC LAND SURVEY MONUMENT RECORD
GRANT COUNTY, WISCONSIN

SECTION 27, TOWNSHIP 2 NORTH, RANGE 2 WEST OF THE 4TH P.M.

HISTORY OF CORNER:

ORIGINAL CORNER SET IN 1833 BY LUCIUS LYON. IN 1999, LARRY AUSTIN RE-ESTABLISHED AND PLACED AN ALUMINUM MONUMENT AT CORNER LOCATION.



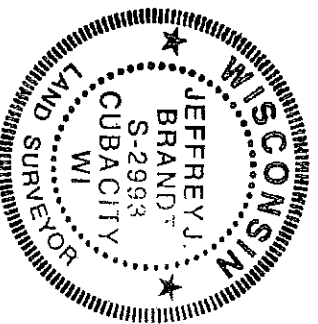
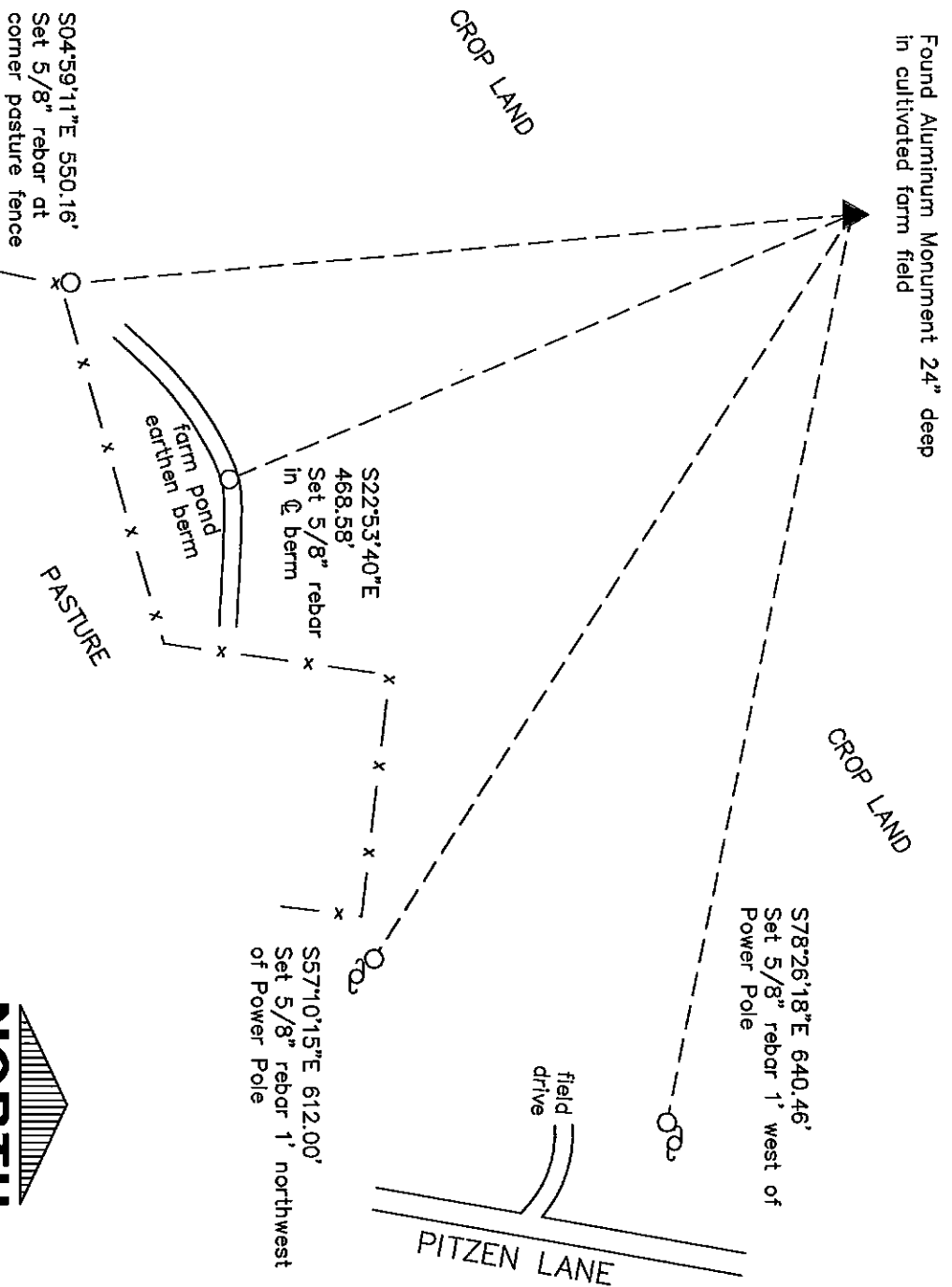
WEST 1/4 CORNER
SEC 27, T2N, R2W
TOWN OF PARIS

CORNER NUMBER 97

DESCRIPTION OF CORNER AND EVIDENCE FOUND:


FOUND GRANT COUNTY ALUMINUM MONUMENT IN GOOD CONDITION AS DESCRIBED IN 1999 AUSTIN MONUMENT RECORD. SWING TIES DESTROYED. ACCEPTED CORNER AND PLACED NEW SWING TIES AS SHOWN BELOW.

PLAN - VIEW



I, Jeffrey J. Brandt certify that the corner location shown on this record was determined by me or under my direction and control and that this U.S. Public Land Survey Monument Record is correct and complete to the best of my knowledge and belief.

Jeffrey J. Brandt 6-18-15
Signature Date

		IIR, P.C. ARCHITECTURE CIVIL ENGINEERING CONSTRUCTION SERVICES ENVIRONMENTAL ENGINEERING LAND SURVEYING MUNICIPAL ENGINEERING STRUCTURAL ENGINEERING TRANSPORTATION ENGINEERING	
www.iiwinc.com • 800.556.4491		FIELD BK. 422	
DRAWN	JJB	CHECKED	BMR
DATE	6-11-15	PROJ. NO.	14209
P:\14\209\DRAWINGS\SURVEY\14209 CORNER CERTS		SHEET	1 of 1

GRANT COUNTY CERTIFIED LAND CORNER

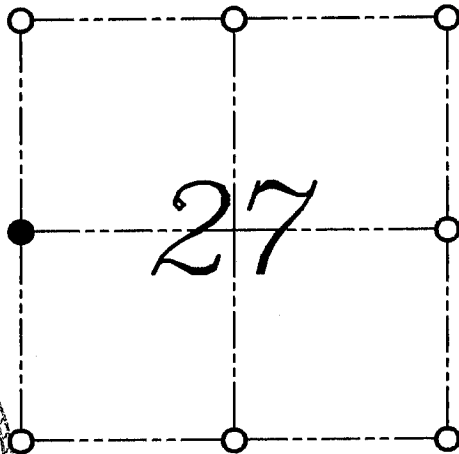
CORNER NUMBER 97

CERTIFICATE:

I, LARRY L. AUSTIN, DO HEREBY CERTIFY THAT ON FIRST DAY OF MAY, 1999, I FOUND NO EVIDENCE OF THE WEST 1/4 CORNER OF SECTION 27, TOWN 2 NORTH, RANGE 2 WEST, OF THE FOURTH PRINCIPAL MERIDIAN, AND I RE-ESTABLISHED SAID CORNER ACCORDING TO THE WISCONSIN STATUTES AS SHOWN AND DESCRIBED HEREON.

DATED THIS TWENTY-SECOND DAY OF MAY, 1999

Larry L. Austin
LARRY L. AUSTIN S-1903



● = CORNER LOCATION

WEST 1/4 CORNER OF
SECTION 27, T 2 N R 2 W
TOWN OF PARIS



HISTORY OF ORIGINAL CORNER ESTABLISHMENT:

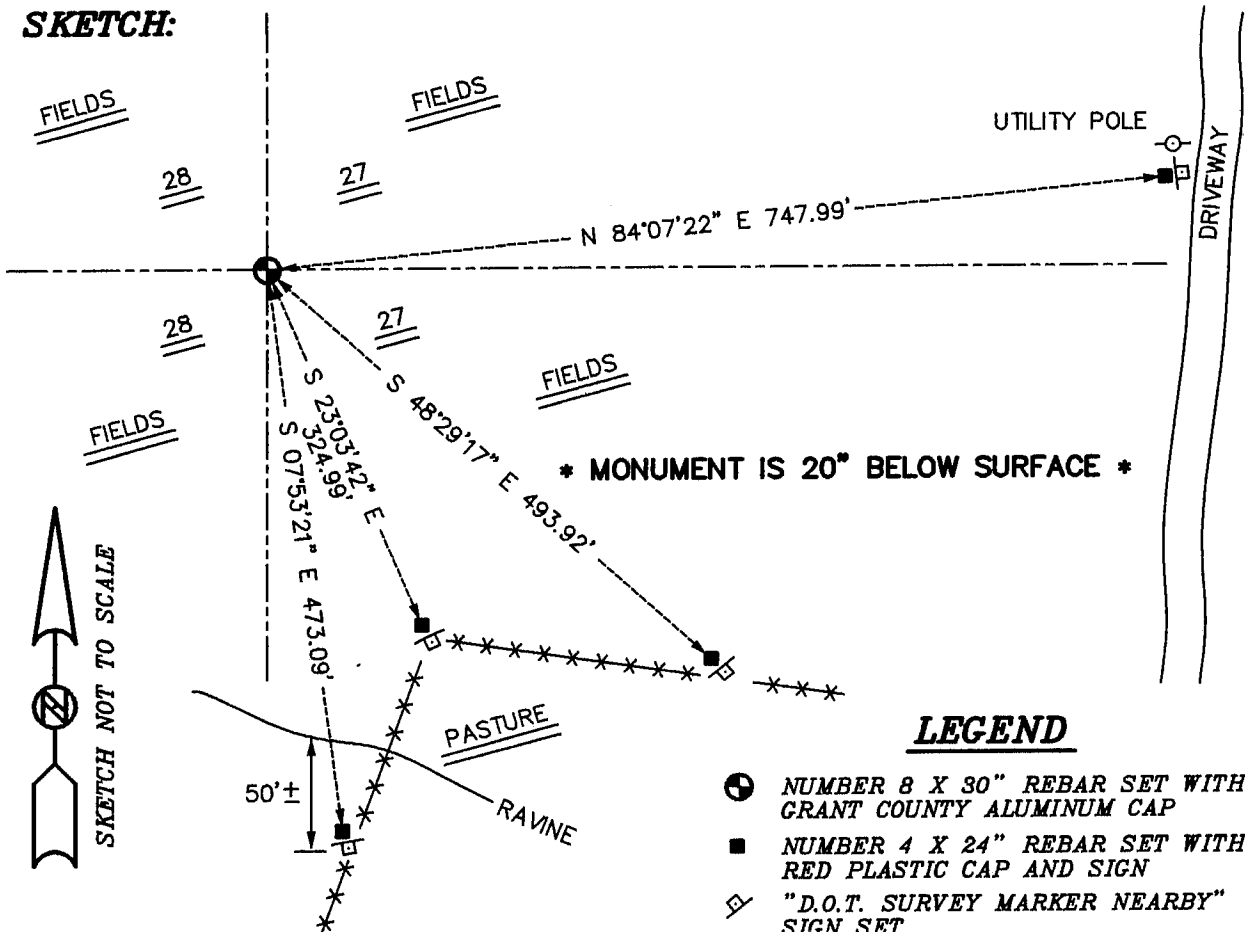
CORNER WAS SET IN 1833 BY LUCIUS LYON.

DESCRIPTION OF CORNER EVIDENCE FOUND:

I SET THE CORNER AT A SINGLE PROPORTION ALONG THE WEST LINE OF THE NORTHWEST 1/4 OF SECTION 27. VERIFIED THIS LOCATION USING E.D.M. AND G.P.S. METHODS.

DESCRIPTION OF CORNER AND WITNESS MONUMENTS, REFERENCES AND ACCESSORIES USED TO PERPETUATE THE ORIGINAL OR RE-ESTABLISHED LOCATION OF THIS CORNER:
WITNESS TO THE CORNER LOCATION: BOBBY SEDGWICK ; SHELBY BLINDERT

SKETCH:



LEGEND

- ⊕ NUMBER 8 X 30" REBAR SET WITH GRANT COUNTY ALUMINUM CAP
- NUMBER 4 X 24" REBAR SET WITH RED PLASTIC CAP AND SIGN
- ◇ "D.O.T. SURVEY MARKER NEARBY" SIGN SET
- **-** EXISTING FENCE LOCATION