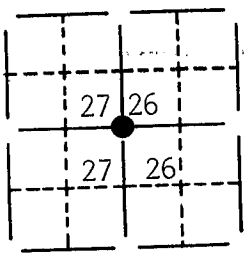


# U. S. PUBLIC LAND SURVEY MONUMENT RECORD FOR GRANT COUNTY, WISCONSIN

Note: This form is intended and designed to fulfill all requirements of Wisconsin Administrative Code, Chapter A-E7.08, U.S. Public Land Survey Monument Record (3)(a)(b)(c)(d)(e)(f)(g)(h)(i). Use additional sheet if necessary.

(a) The  section,  one quarter corner common to sections 27, 26,  
Township(s) 02 N, Range(s) 02 W

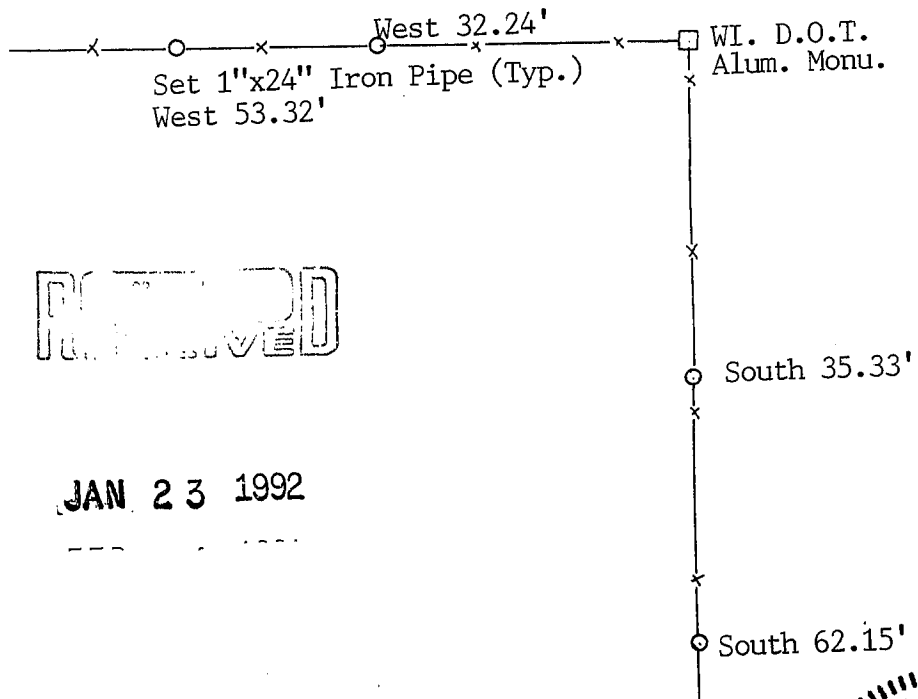


State plane coordinates: N 225,166.5489  
E 1,843,075.2562

(b)(f)(g)(h) Description of monument found at this corner and if it was accepted, state all evidence (material, testimonial, occupational, plats, records, other monuments) used as a basis for accepting. If not accepted or nothing was found, state evidence used as basis for establishing location and what was set. If reestablished through lost corner proportionate methods, indicate all monuments, distances and directions used.

Found and accepted an 1" O.D. Iron Pipe at the E 1/4 Corner of Sec. 27.  
Replaced Iron Pipe with WI. D.O.T. Alum. Monument.

(c)(d)(e) Plan view of corner with ties to at least 4 witness monuments. If in disagreement with previously established corner, show the distances between the two corners and also indicate ties to disputed corner.



RECORDED

JAN 23 1992

(i) I certify that the corner location on this record was determined by me or under my direction and control and that this U.S. Public Land Survey Monument Record is correct and complete to the best of my knowledge and belief.

[Signature]  
Signature

Oct 30, 1991  
Date



Filed for record in Grant County Surveyor's Office on \_\_\_\_\_

*Paris Townships*

# US. PUBLIC LAND SURVEY MONUMENT RECORD

CORNER DESCRIPTION: E 1/4 CORNER, SECTION 27, T 2 N, R 2 W

STATE PLANE COORDINATES: N \_\_\_\_\_, E \_\_\_\_\_

THETA ANGLE: \_\_\_\_\_

HORIZONTAL DATUM: WISCONSIN STATE PLANE COORDINATE SYSTEM, SOUTH ZONE

EVIDENCE: FOUND IRON PIPE OF RECORD, IN GOOD CONDITION.

MONUMENT: FOUND , PLACED

METHOD OF RESTORATION (RE-ESTABLISHMENT):

ACCEPTED EXISTING MONUMENT

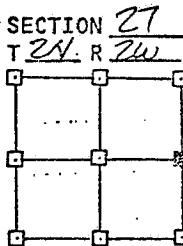
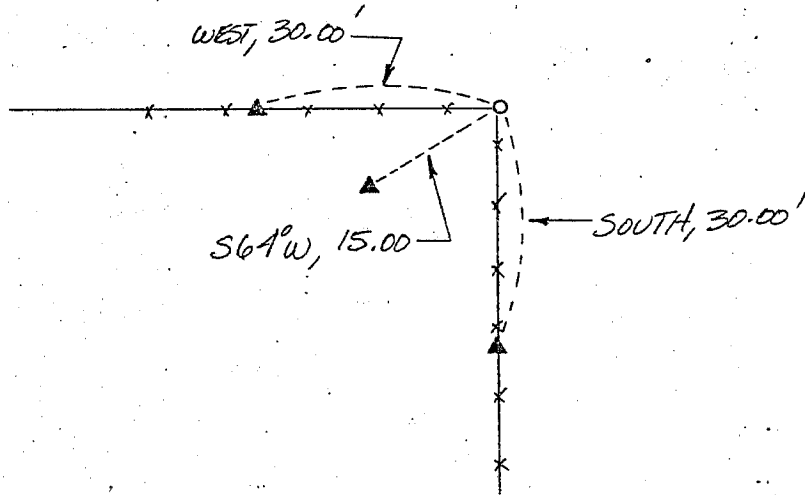
N , E  ACCEPTED OCCUPATION

N , E  LOST CORNER PROPORTIONATE METHODS

DATE CORNER SET: NOVEMBER, 1922

### LEGEND

- ▲ SET #6 REBAR, 1.13 LBS. PER LINEAL FT. MIN. WT.
- SET 1" X 24" IRON PIPE, 1.13 LBS. PER LINEAL FT. MIN. WT.
- SET 2" X 30" IRON PIPE, 3.65 LBS. PER LINEAL FT. MIN. WT.
- FOUND 1" IRON PIPE
- FOUND 2" IRON PIPE
- FOUND R/R SPIKE
- SET R/R SPIKE
- ⊙ GOVERNMENT CORNER
- EXISTING FENCE



NOT TO SCALE THIS CONFORMS TO WISCONSIN ADMINISTRATIVE CODE A-E 5.02

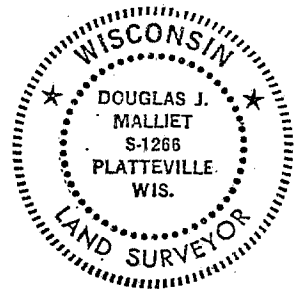
### SURVEYOR'S AFFIDAVIT:

STATE OF WISCONSIN)  
GRANT COUNTY) SS

I hereby certify that I, DOUGLAS J. MALLIET, have complied with the Wisconsin State Statutes, Statutes of the United States, and the rules and regulations made by the Secretary of the Interior in the location of the corner shown above.

DATE OF SURVEY: 3-5-83

Douglas J. Malliet  
REGISTERED LAND SURVEYOR  
# 0266



D. F. BURBACH MUNICIPAL & CIVIL ENGINEERS

410 NORTH SECOND STREET • PLATTEVILLE, WISCONSIN 53818 • (608) 348-3262

MAY 2 1983

*1983*