

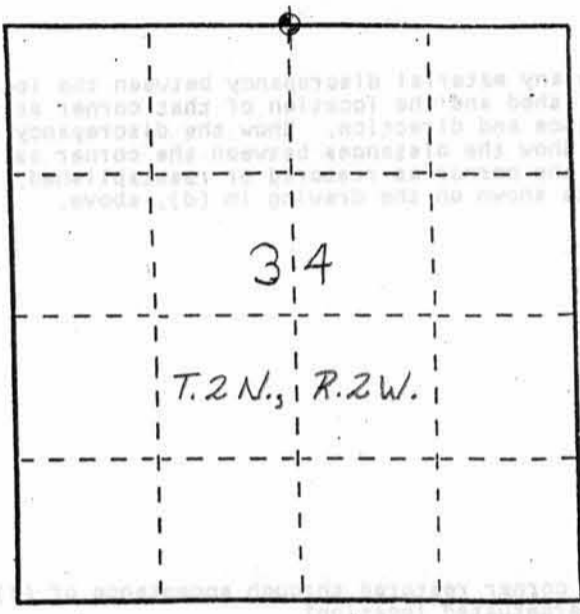
# U. S. PUBLIC LAND SURVEY MONUMENT RECORD

**INSTRUCTIONS:** This record shall show the location of the corner and shall include all of the following nine elements (a through i).

(a) Identify the corner by reference to the U.S. public land survey system.

○ = Corner monument restored.

The North Quarter Corner  
of Section 34, Town 2 North,  
Range 2 West, Paris Twp.,  
Grant Co., Wisconsin.

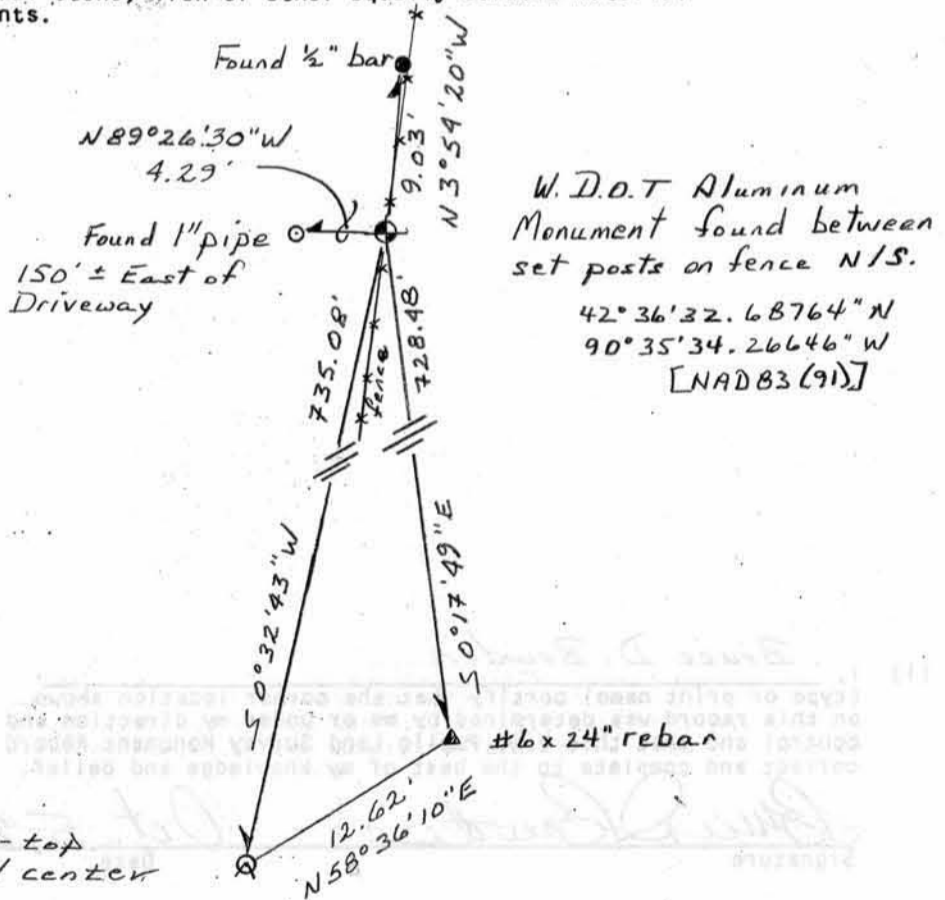


(b) Describe any record evidence, monument evidence, occupational evidence, testimonial evidence or any other material evidence you considered, and whether the monument was found or placed.

I found and accepted the W.D.O.T. aluminum monument noted by Carl M. Sandsnes on a tie sheet dated 10/30/1991.

(c) In the plan view drawing below, provide reference ties to at least 4 witness monuments, or, if the location is within a municipality, to at least 2 witness monuments. (Witness monuments shall be made of concrete, natural stone, iron or other equally durable material. Describe witness monuments.)

(d) Show a plan view drawing depicting the relevant monuments and reference ties which is sufficient in detail to enable accurate relocation of the corner monument if the corner monument is disturbed. Indicate north.



SCALE: 1" = 10'

U. S. PUBLIC LAND SURVEY MONUMENT RECORD

(e) Describe any material discrepancy between the location of the corner as restored or reestablished and the location of that corner as previously restored or reestablished by distance and direction. Show the discrepancy on the plan view drawing under (d), above. Show the distances between the corner as previously restored or reestablished and (1) the corner as restored or reestablished, and (2) to at least 2 of the witness monuments shown on the drawing in (d), above.

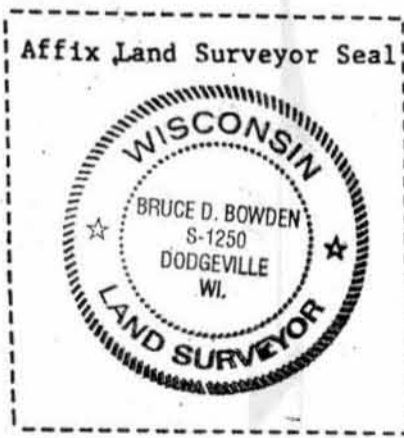
None.

(f) Was the corner restored through acceptance of (1) an obliterated evidence location, or, (2) a found perpetuated location?

A found perpetuated location.

(g&h) Was the corner reestablished through lost corner proportionate methods? If so, show the method, including the directions and distances to other public land survey corners used as evidence or used for proportioning in determining the corner location?

No.



(i) I, Bruce D. Bowden (type or print name) certify that the corner location shown on this record was determined by me or under my direction and control and that this U.S. Public Land Survey Monument Record is correct and complete to the best of my knowledge and belief.

Bruce D. Bowden Signature Oct 5, 2009 Date

*Paris Township*

# US. PUBLIC LAND SURVEY MONUMENT RECORD

CORNER DESCRIPTION: SK4 CORNER, SECTION 27, T 2N, R 2W

STATE PLANE COORDINATES: N \_\_\_\_\_, E \_\_\_\_\_

THETA ANGLE: \_\_\_\_\_

HORIZONTAL DATUM: WISCONSIN STATE PLANE COORDINATE SYSTEM, SOUTH ZONE

EVIDENCE: FOUND ANCIENT FENCE TO EAST & SOUTH, & ESTABLISHED FENCE NORTH.

MONUMENT: FOUND , PLACED

METHOD OF RESTORATION (RE-ESTABLISHMENT):

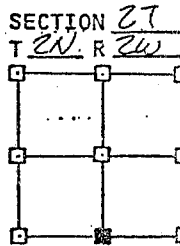
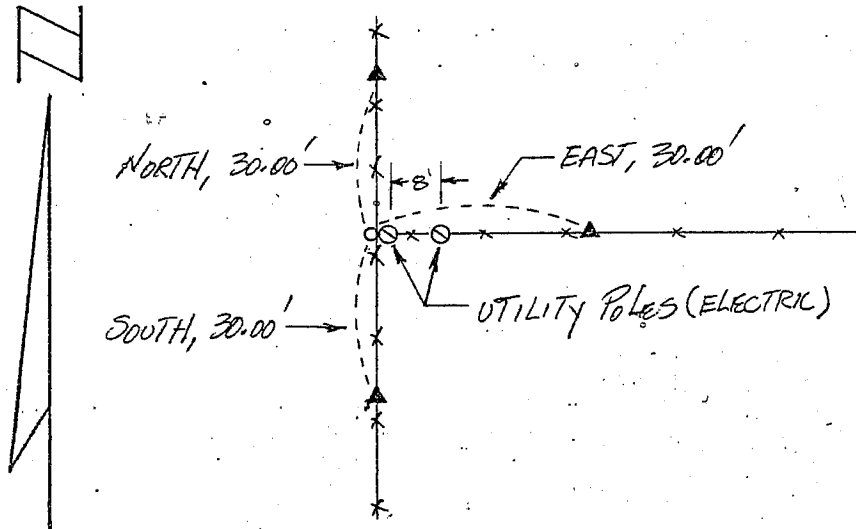
ACCEPTED EXISTING MONUMENT

N , E  ACCEPTED OCCUPATION

N , E  LOST CORNER PROPORTIONATE METHODS

DATE CORNER SET: NOVEMBER, 1982

- LEGEND**
- ▲ SET #6 REBAR, 1.13 LBS PER LINEAL FT. MIN. WT.
  - SET 1" X 24" IRON PIPE, 1.13 LBS. PER LINEAL FT. MIN. WT.
  - SET 2" X 30" IRON PIPE, 3.65 LBS. PER LINEAL FT. MIN. WT.
  - FOUND 1" IRON PIPE
  - FOUND 2" IRON PIPE
  - FOUND R/R SPIKE
  - SET R/R SPIKE
  - ⬠ GOVERNMENT CORNER
  - EXISTING FENCE



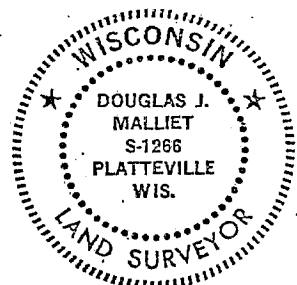
NOT TO SCALE THIS CONFORMS TO WISCONSIN ADMINISTRATIVE CODE A-E 5.02

**SURVEYOR'S AFFIDAVIT:**

STATE OF WISCONSIN)  
GRANT COUNTY) SS

I hereby certify that I, DOUGLAS J. MALLIET, have complied with the Wisconsin State Statutes, Statutes of the United States, and the rules and regulations made by the Secretary of the Interior in the location of the corner shown above.

DATE OF SURVEY: 3-5-83 Douglas J. Malliet  
REGISTERED LAND SURVEYOR  
# 11266



**D. F. BURBACH MUNICIPAL & CIVIL ENGINEERS**

410 NORTH SECOND STREET • PLATTEVILLE, WISCONSIN 53818 • (608) 348-3262

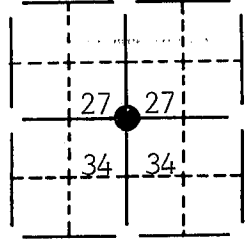
MAY 24 1983

106

# U.S. PUBLIC LAND SURVEY MONUMENT RECORD FOR GRANT COUNTY, WISCONSIN

Note: This form is intended and designed to fulfill all requirements of Wisconsin Administrative Code, Chapter A-E7.08, U.S. Public Land Survey Monument Record (3) (a) (b) (c) (d) (e) (f) (g) (h) (i). Use additional sheet if necessary.

(a) The  section,  one quarter corner common to sections 27, 34,  
Township(s) 02 N, Range(s) 02 W

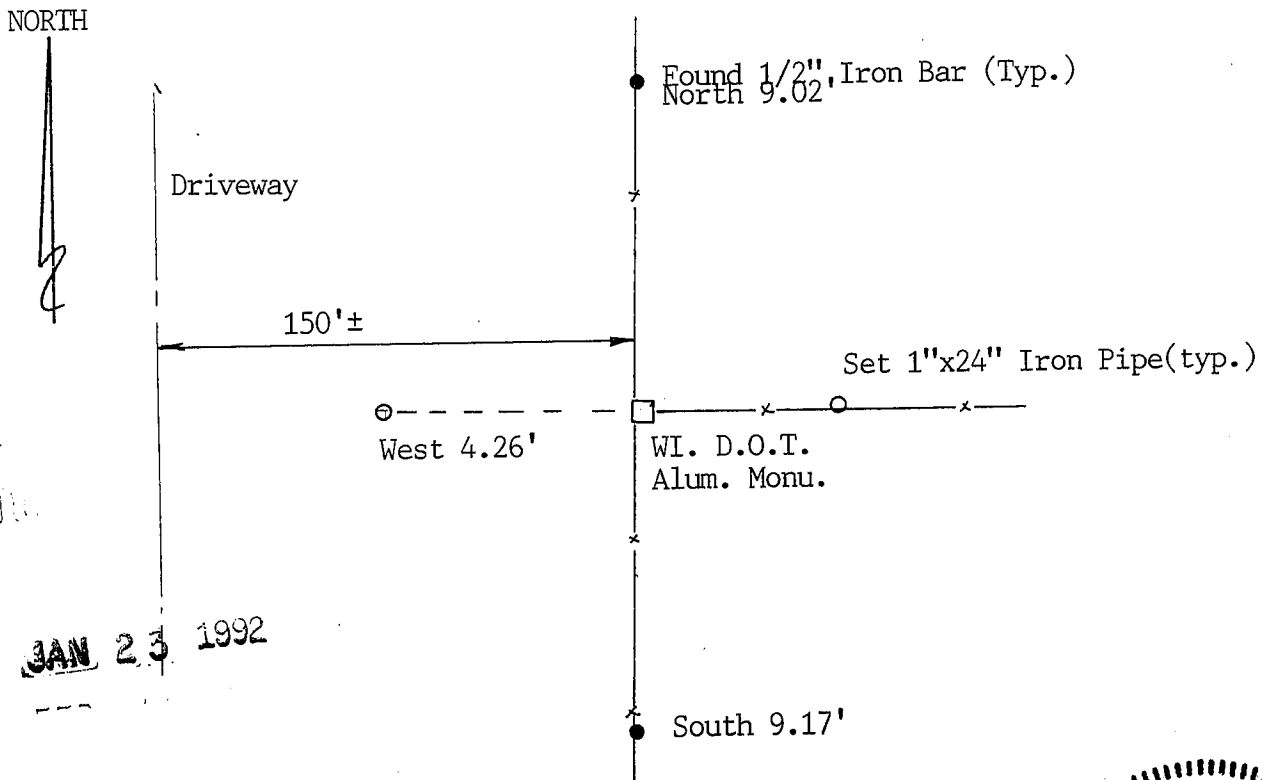


State plane coordinates: N 222,559.4354  
E 1,840,423.9171

(b) (f) (g) (h) Description of monument found at this corner and if it was accepted, state all evidence (material, testimonial, occupational, plats, records, other monuments) used as a basis for accepting. If not accepted or nothing was found, state evidence used as basis for establishing location and what was set. If reestablished through lost corner proportionate methods, indicate all monuments, distances and directions used.

Found and accepted an 1" O.D. Iron Pipe at the S 1/4 Corner of Sec. 27.  
Replaced Iron Pipe with WI. D.O.T. Alum. Monument.

(c) (d) (e) Plan view of corner with ties to at least 4 witness monuments. If in disagreement with previously established corner, show the distances between the two corners and also indicate ties to disputed corner.



(i) I certify that the corner location on this record was determined by me or under my direction and control and that this U.S. Public Land Survey Monument Record is correct and complete to the best of my knowledge and belief.

[Signature]  
Signature

OCT 30, 1991  
Date



Filed for record in Grant County Surveyor's Office on \_\_\_\_\_