

OCT 28 2016

U.S. PUBLIC LAND SURVEY MONUMENT RECORD - GRANT COUNTY, WI

Section 25, Town 2 North Range 2 West, Town of Paris (a)

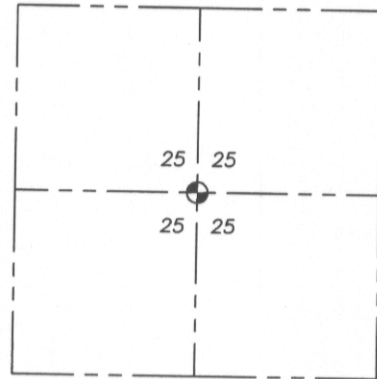
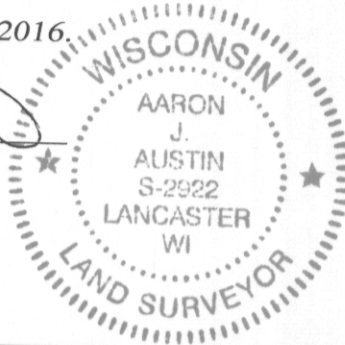
NOTE: This form is intended and designed to fulfill all requirements of the Wisconsin Administrative Code Chapter A-E 7.08, U.S. Public Land Survey Monument Record (3) (a) (b) (c) (d) (e) (f) (g) (h) (i).

CERTIFICATE: (i)

I, Aaron J. Austin, Wisconsin Professional Land Surveyor, do hereby certify that the corner location on this record was determined by me and/or under my direct supervision and that this U.S. Public Land Survey Monument Record is correct and complete to the best of my knowledge and belief.

Dated this 26th day of October, 2016.

Aaron J. Austin
Aaron J. Austin, S-2922



⊕ = CORNER LOCATION

Grant County Coordinates:
NAD 83 (2011)
Northing: 439,346.88
Easting: 861,315.39

HISTORY OF CORNER ESTABLISHMENT:

Corner was not set with original survey.

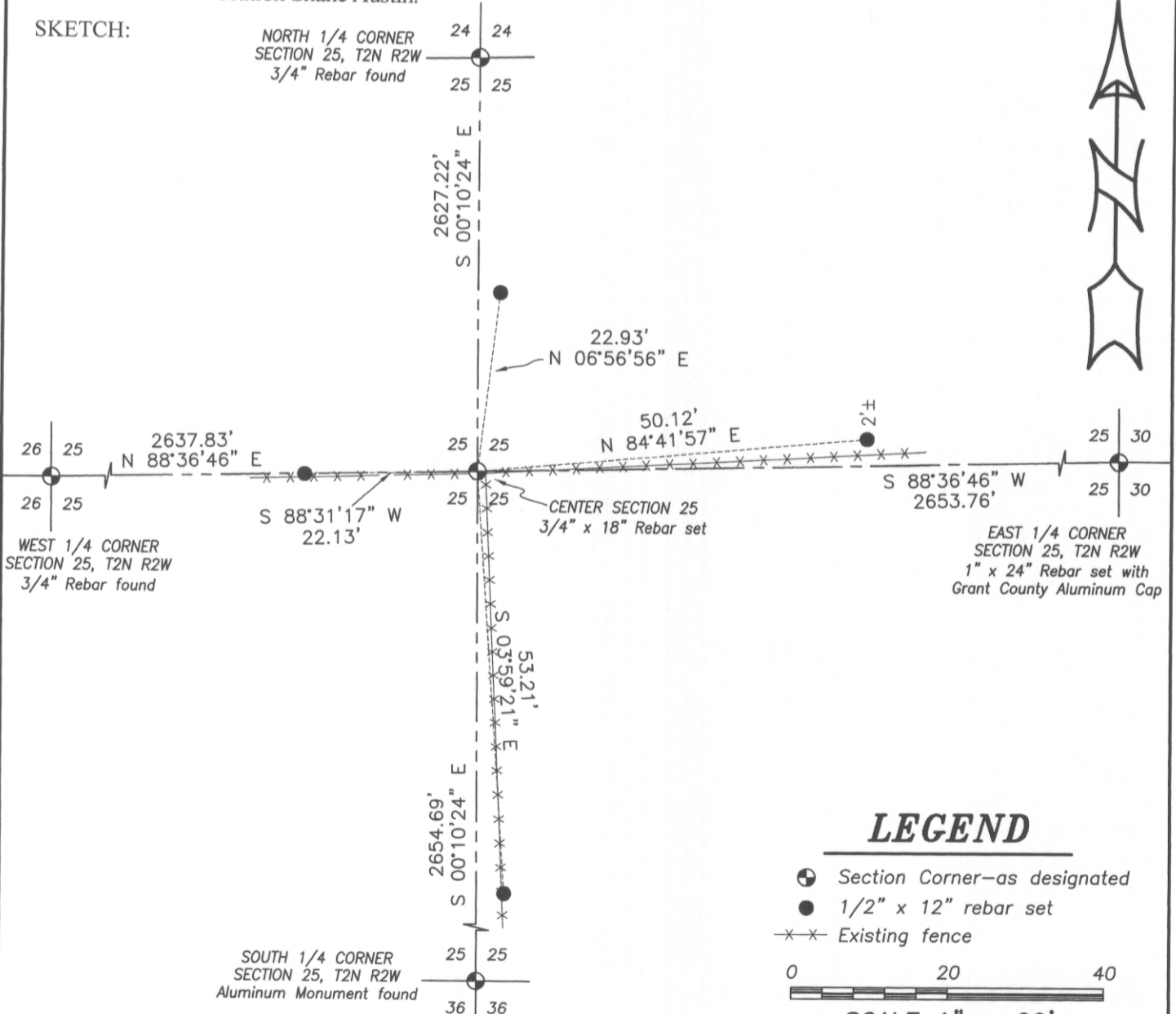
DESCRIPTION OF CORNER EVIDENCE FOUND: (b) (f) (g) (h)

I set a 3/4" Rebar at the intersection of the North-South 1/4 line and the East-West 1/4 line. I set 4 witness corners as shown below and County Coordinates were established using WISCORS NAD 83 (2011).

DESCRIPTION OF CORNER AND WITNESS MONUMENTS, references and accessories used to perpetuate the original or re-established location of this corner. (c) (d) (e)

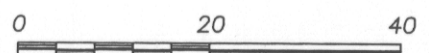
Witnesses to corner location Shane Austin.

SKETCH:



LEGEND

- ⊕ Section Corner—as designated
- 1/2" x 12" rebar set
- x-x- Existing fence



SCALE 1" = 20'