

U.S. PUBLIC LAND SURVEY MONUMENT RECORD - GRANT COUNTY, WI

Section 25, Town 2 North Range 2 West, Town of Paris (a)

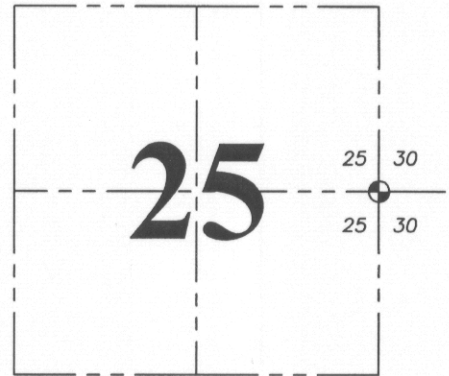
NOTE: This form is intended and designed to fulfill all requirements of the Wisconsin Administrative Code Chapter A-E 7.08, U.S. Public Land Survey Monument Record (3) (a) (b) (c) (d) (e) (f) (g) (h) (i).

CERTIFICATE: (i)

I, Aaron J. Austin, Wisconsin Professional Land Surveyor, do hereby certify that the corner location on this record was determined by me and/or under my direct supervision and that this U.S. Public Land Survey Monument Record is correct and complete to the best of my knowledge and belief.

Dated this 26th day of October, 2016

Aaron J. Austin
 Aaron J. Austin, S-2922



⊙ = CORNER LOCATION

Grant County Coordinates:
 NAD 83 (2011)
 Northing: 439,411.13
 Easting: 863,968.37

HISTORY OF CORNER ESTABLISHMENT:

Lucius Lyon set the original corner in 1832.

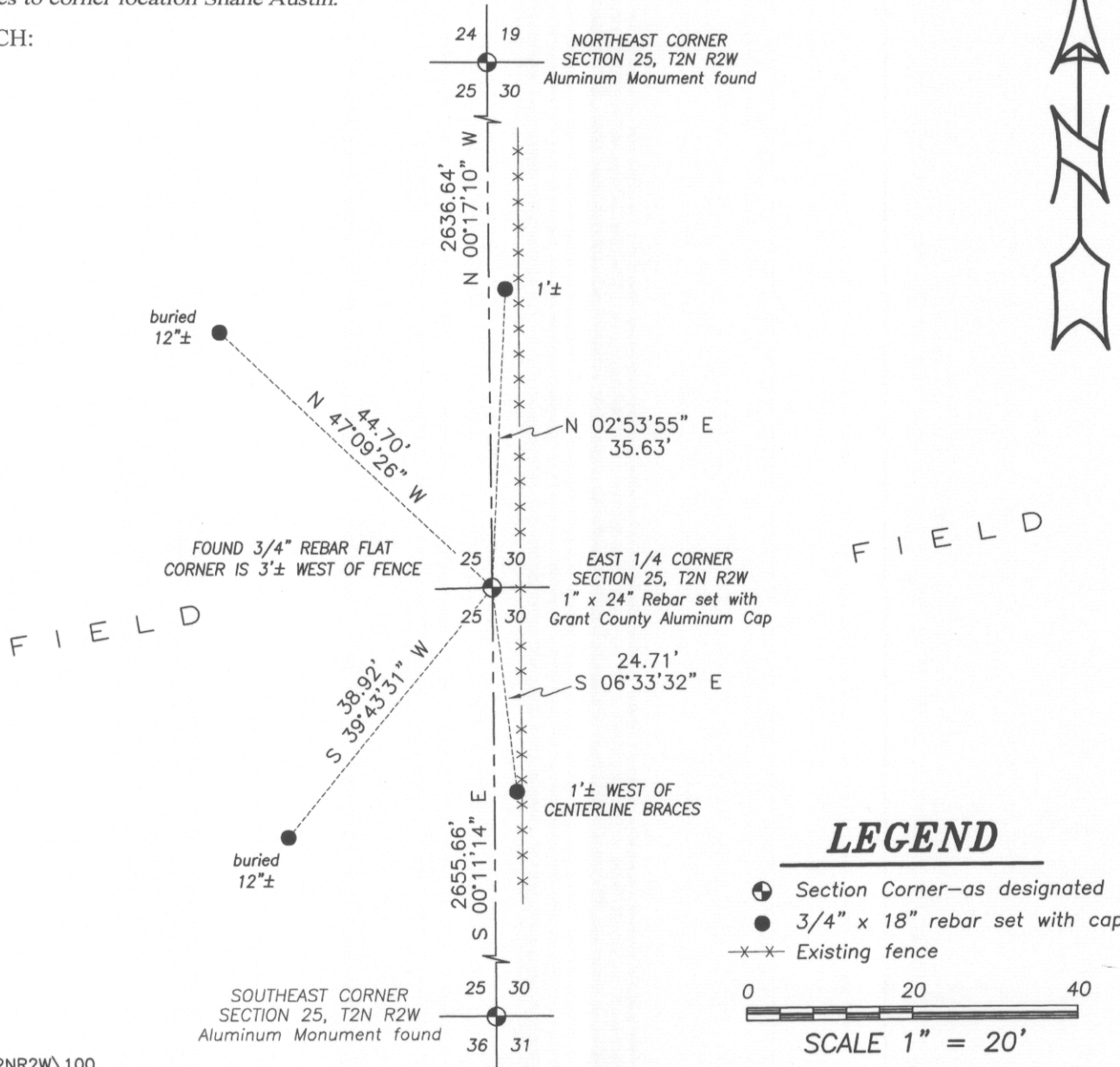
Larry Austin reset the corner and filed a Survey Monument Record for the corner in 1997.

DESCRIPTION OF CORNER EVIDENCE FOUND: (b) (f) (g) (h)

I found the 3/4" Rebar set by Larry Austin lying flat. No witness corners were recovered in good condition. I reset the corner based upon dimensions from a Survey by Daniel Paulson dated 7-1-2009 filed in Book 26, Page 30. I set 4 new witness corners after I verified it's location with G.P.S. and E.D.M. methods. County Coordinates were established using WISCORS NAD 83 (2011).

DESCRIPTION OF CORNER AND WITNESS MONUMENTS, references and accessories used to perpetuate the original or re-established location of this corner. (c) (d) (e)
 Witnesses to corner location Shane Austin.

SKETCH:

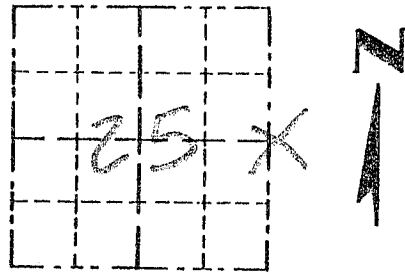


Survey Monument Record

TYPE OF MONUMENT 3/4" x 24" IRON
BAR SET

CORNER NO. 100
SECTION 25
TOWN 2N
RANGE 2W

FIELD BOOK: 97-01
PAGE _____



LOCATION
(Indicated by "X")

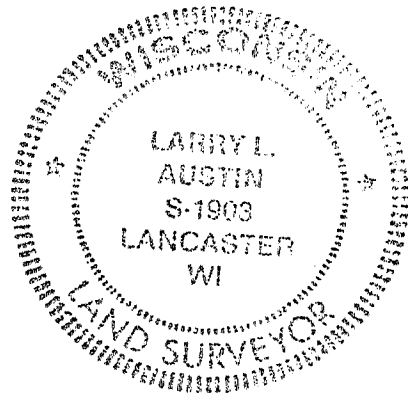
BASIS FOR MONUMENT LOCATION

(Use reverse side if necessary)

Show info such as: History of corner, with reference to Vol. and pg., dates, surveyor; exact description of monument replaced; if location computed, by taped or EDM traverse; landowner, remarks, etc.

SEAL:

CORNER SET IN 1832 BY L. LYON. NO RECORD OF CORNER FOUND SINCE ORIGINAL SURVEYS; CORNER SET IN NORTH / SOUTH FENCE FOR EASTING. NORTHING SET BY PROJECTION OF A FENCE FROM THE WEST. VERIFIED THIS LOCATION BY EDM TRAVERSE OF THE AREA.



CERTIFIED CORRECT

Larry L. Austin
Registered Land Surveyor

DATE: 11-16-97

TIE SKETCH

Show at least three (3) ties and monument

LEGEND

- 3/4" x 24" IRON BAR SET
- 1/2" x 15" IRON BAR SET
- XX EXISTING FENCE

