

CERTIFIED LAND CORNER

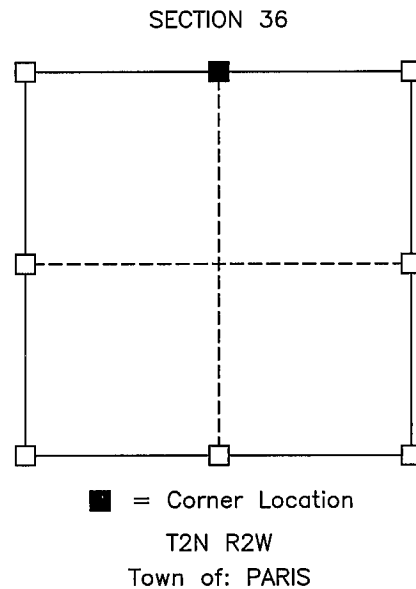
STATE OF WISCONSIN COUNTY OF GRANT

CERTIFICATE

I, Stanley J. King, do hereby certify that the corner location of this record was determined by me and/or under my direct supervision and that this U.S. public land survey monument record is correct and complete to the best of my knowledge and belief.

Dated this 4th day of January, 2002

Stanley J. King
Stanley J. King S-2001



Seal:

History of original corner establishment:

Original corner was set in 1833 by Lucius Lyon.
Corner was reset in 1997 by Larry Austin.

Description of corner evidence found:

Corner was destroyed during re-construction of CTH "HH" in 2001.
Prior to being destroyed, corner was tied off, and replaced to the exact location after construction.

Description of corner and witness monuments, references, and accessories used to perpetuate the original or re-established location of this corner:

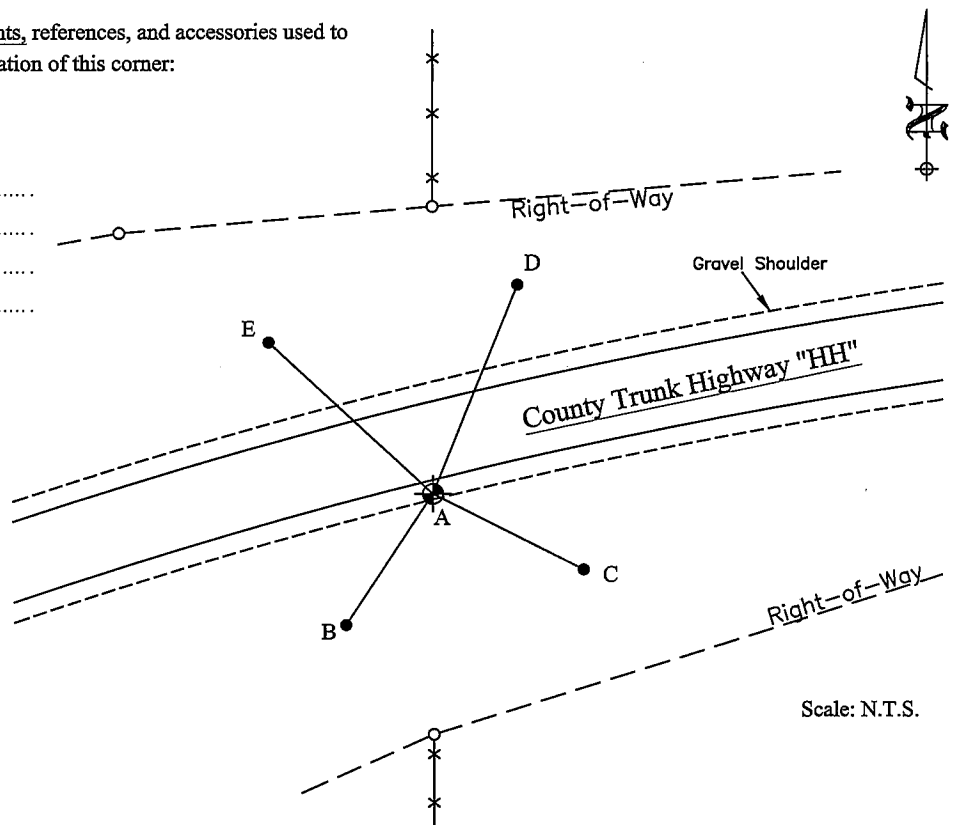
Witnesses to corner location:

Stanley J. King
Daniel J. Dreessens
.....
.....

LEGEND

- = SECTION CORNER (WisDOT ALUM. MONUMENT)
- = TIE BAR (WisDOT ALUM. MONUMENT)
- = WisDOT R/W PIN (3/4" BAR FOUND)

- (A-B) = S 33°27'12" W 49.04'
- (A-C) = S 63°08'56" E 52.45'
- (A-D) = N 21°49'27" E 70.51'
- (A-E) = N 47°12'22" W 69.95'



BLACKHAWK
ENGINEERING, Ltd.

Civil & Municipal Engineers and Building Design
2 INSIGHT DRIVE OFFICE PHONE: (608) 348-4433
PLATTEVILLE, WISCONSIN FAX: (608) 348-4449

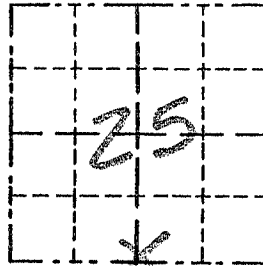
SURVEY CREW: DJD, SJK
DRAWN BY: DJD
DATE: JAN. 4, 2002
FILE: f:\acad12\2001\01-018\tiesheetnorthcor36.dwg

Survey Monument Record

TYPE OF MONUMENT 3/4" X 24" IRON BAR
SET

CORNER NO. 102
 SECTION 25
 TOWN 2N
 RANGE 7W

FIELD BOOK: 97-01
 PAGE _____



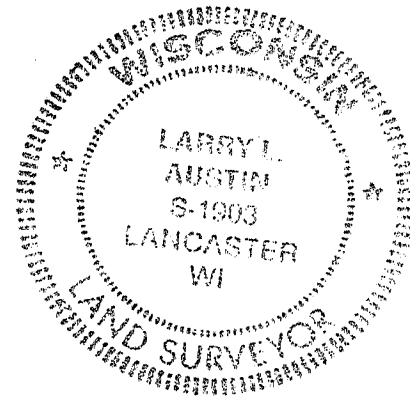
BASIS FOR MONUMENT LOCATION

(Use reverse side if necessary)

Show info such as: History of corner, with reference to Vol. and pg., dates, surveyor; exact description of monument replaced; if location computed, by taped or EDM traverse; landowner, remarks, etc.

LOCATION
 (Indicated by "X")

SEAL:



CORNER SET IN 1933 BY LUCIUS LYON. NO SURVEY RECORD OF CORNER FOUND SINCE ORIGINAL SURVEY; CORNER WAS SET ONLINE WITH THE SOUTHWEST AND SOUTHEAST CORNERS ALSO ONLINE WITH A FENCE NORTH/SOUTH; VERIFIED THIS LOCATION USING EDM METHODS.

CERTIFIED CORRECT

Larry L. Austin
 Registered Land Surveyor

DATE: 11-16-97

TIE SKETCH

Show at least three (3) ties and monument

LEGEND

- ⊙ 3/4" X 24" IRON BAR SET
- 1/2" X 15" IRON BAR SET
- XX EXISTING FENCE

