

**U.S. PUBLIC LAND SURVEY MONUMENT RECORD - GRANT COUNTY, WI**

Section 25, Town 2 North Range 2 West, Town of Paris (a)

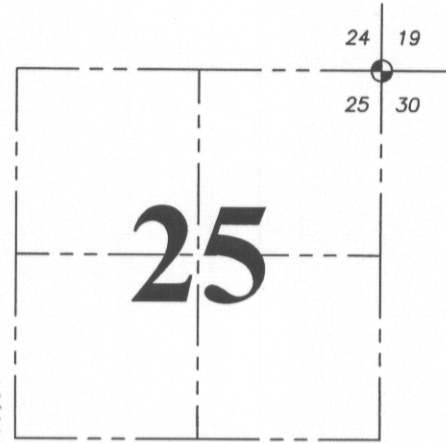
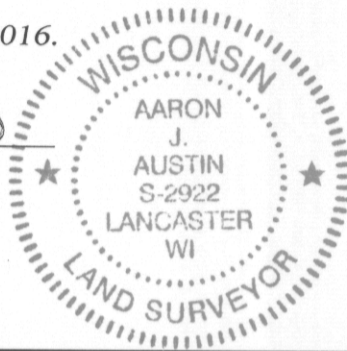
NOTE: This form is intended and designed to fulfill all requirements of the Wisconsin Administrative Code Chapter A-E 7.08, U.S. Public Land Survey Monument Record (3) (a) (b) (c) (d) (e) (f) (g) (h) (i).

**CERTIFICATE: (i)**

I, Aaron J. Austin, Wisconsin Professional Land Surveyor, do hereby certify that the corner location on this record was determined by me and/or under my direct supervision and that this U.S. Public Land Survey Monument Record is correct and complete to the best of my knowledge and belief.

Dated this 26th day of October, 2016.

*Aaron J. Austin*  
 Aaron J. Austin, S-2922



⊕ = CORNER LOCATION

Grant County Coordinates:  
 NAD 83 (2011)  
 Northing: 442,047.74  
 Easting: 863,955.20

HISTORY OF CORNER ESTABLISHMENT:

Lucius Lyon set the original corner in 1832.

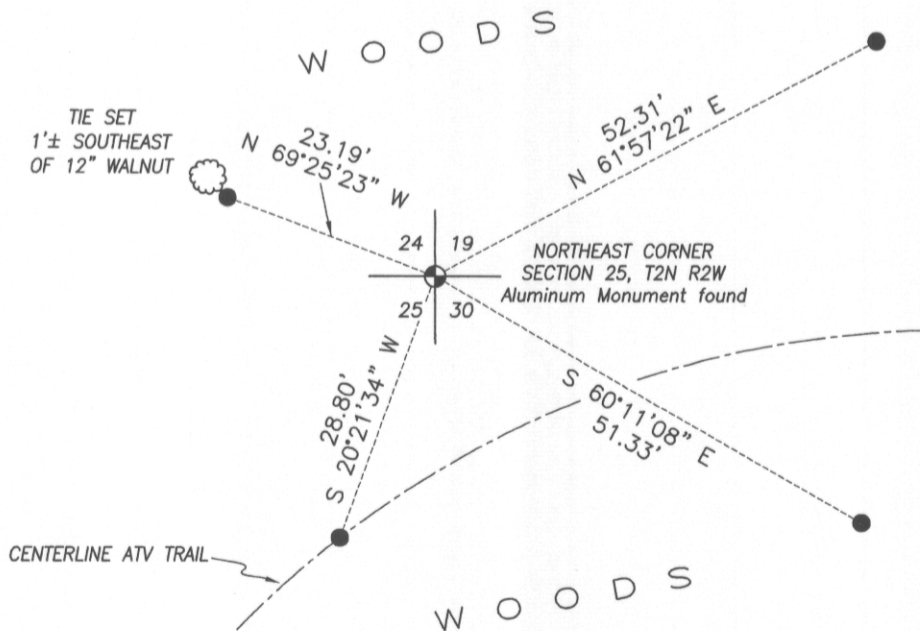
Larry Austin reset the corner and filed a Survey Monument Record for the corner in 1993.

DESCRIPTION OF CORNER EVIDENCE FOUND: (b) (f) (g) (h)

I found the Aluminum Monument in place. I did not recover the 4 witness corners as established by Larry Austin. I set 4 new witness corners after I verified it's location with G.P.S. and E.D.M. methods. County Coordinates were established using WISCORS NAD 83 (2011).

DESCRIPTION OF CORNER AND WITNESS MONUMENTS, references and accessories used to perpetuate the original or re-established location of this corner. (c) (d) (e)  
 Witnesses to corner location Shane Austin.

SKETCH:



**LEGEND**

- ⊕ Section Corner—as designated
- 3/4" x 18" rebar set with cap



SCALE 1" = 20'