

Power Township

U.S. PUBLIC LAND SURVEY MONUMENT RECORD

CORNER DESCRIPTION: N¹/₄ CORNER, SECTION 27, T 2N, R 2W

STATE PLANE COORDINATES: N _____, E _____

THETA ANGLE: _____

HORIZONTAL DATUM: WISCONSIN STATE PLANE COORDINATE SYSTEM, SOUTH ZONE

EVIDENCE: FOUND MONUMENT TIES AS RECORDED AS STATION ON DICKESLER SUBDIVISION; ALL IN GOOD CONDITION

MONUMENT: FOUND ; PLACED

METHOD OF RESTORATION (RE-ESTABLISHMENT):

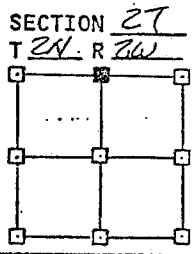
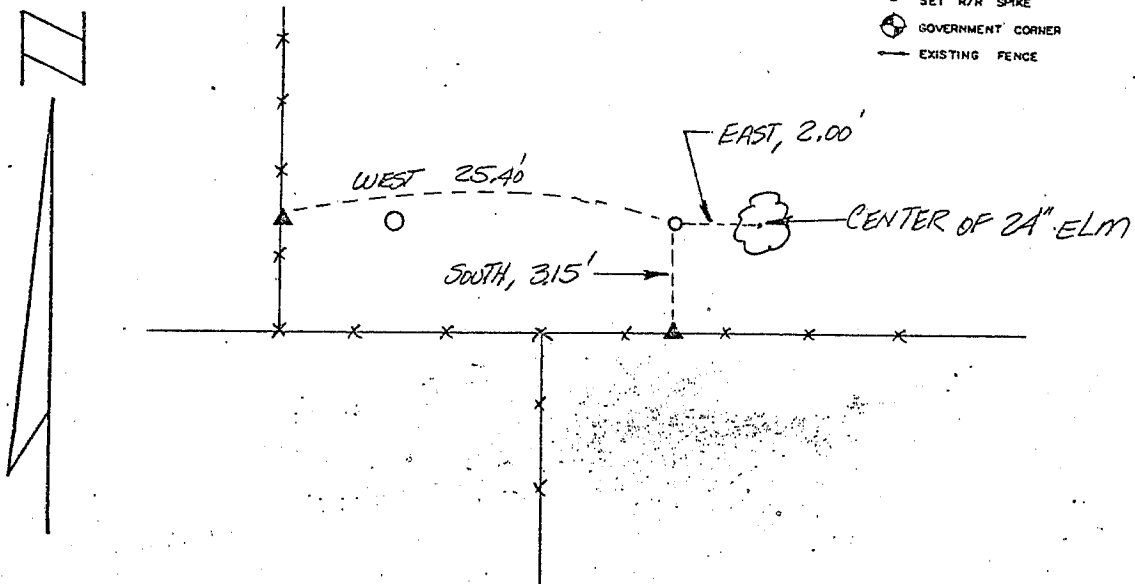
ACCEPTED EXISTING MONUMENT (TIES)

N , E ACCEPTED OCCUPATION

N , E LOST CORNER PROPORTIONATE METHODS

DATE CORNER SET: NOVEMBER, 1982

- LEGEND**
- ▲ SET #6 REBAR, 113 LBS. PER LINEAL FT. MIN. WT.
 - SET 1" X 24" IRON PIPE, 113 LBS. PER LINEAL FT. MIN. WT.
 - SET 2" X 30" IRON PIPE, 365 LBS. PER LINEAL FT. MIN. WT.
 - FOUND 1" IRON PIPE
 - FOUND 2" IRON PIPE
 - FOUND R/R SPIKE
 - SET R/R SPIKE
 - ⊕ GOVERNMENT CORNER
 - EXISTING FENCE



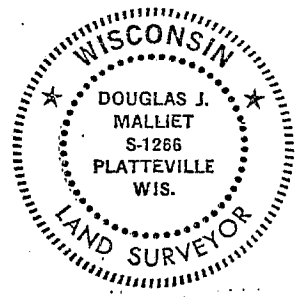
NOT TO SCALE THIS CONFORMS TO WISCONSIN ADMINISTRATIVE CODE A-E 5.02

SURVEYOR'S AFFIDAVIT:

STATE OF WISCONSIN)
GRANT COUNTY) SS

I hereby certify that I, DOUGLAS J. MALLIET, have complied with the Wisconsin State Statutes, Statutes of the United States, and the rules and regulations made by the Secretary of the Interior in the location of the corner shown above.

DATE OF SURVEY: 3-5-83 Douglas J. Malliet
REGISTERED LAND SURVEYOR
1266



D. F. BURBACH MUNICIPAL & CIVIL ENGINEERS

410 NORTH SECOND STREET • PLATTEVILLE, WISCONSIN 53818 • (608) 348-3262

MAY 2 4 1983

26

Four Township

US. PUBLIC LAND SURVEY MONUMENT RECORD

CORNER DESCRIPTION: N¹/₄ CORNER, SECTION 27, T 2N, R 2W

STATE PLANE COORDINATES: N _____, E _____

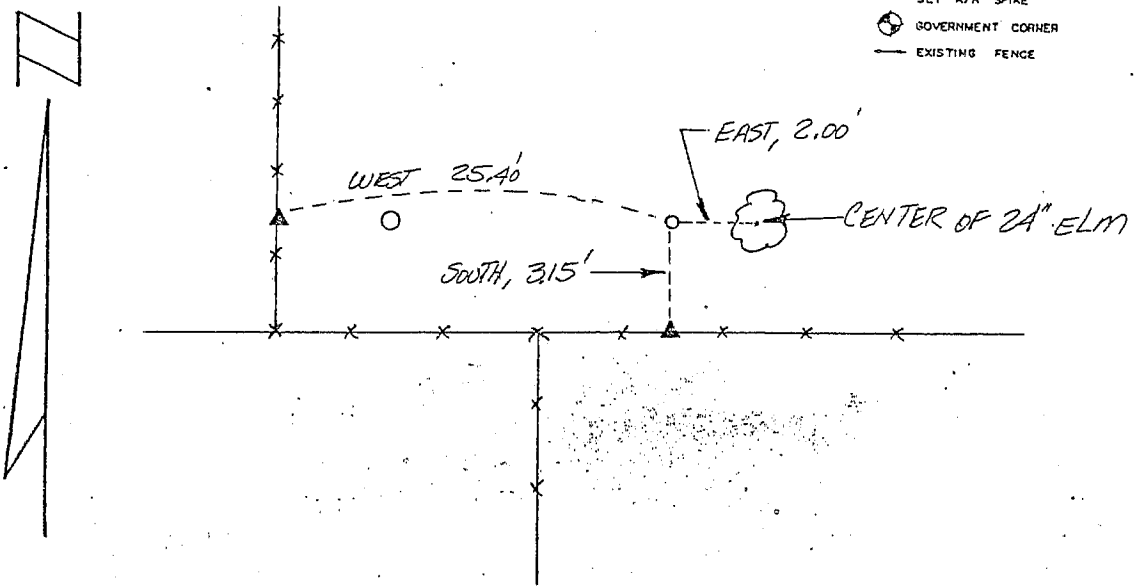
THETA ANGLE: _____

HORIZONTAL DATUM: WISCONSIN STATE PLANE COORDINATE SYSTEM, SOUTH ZONE

EVIDENCE: FOUND MONUMENT TIES OF RECORD AS SHOWN ON DLOESSLER SUBDIVISION; ALL IN GOOD CONDITION.

MONUMENT: FOUND ; PLACED
METHOD OF RESTORATION (RE-ESTABLISHMENT):
 ACCEPTED EXISTING MONUMENT (TIES)
N , E ACCEPTED OCCUPATION
N , E LOST CORNER PROPORTIONATE METHODS
DATE CORNER SET: NOVEMBER, 1982

- LEGEND
- ▲ SET #6 REBAR, 113 LBS. PER LINEAL FT. MIN. WT.
 - SET 1" X 24" IRON PIPE, 113 LBS. PER LINEAL FT. MIN. WT.
 - SET 2" X 30" IRON PIPE, 365 LBS. PER LINEAL FT. MIN. WT.
 - FOUND 1" IRON PIPE
 - FOUND 2" IRON PIPE
 - FOUND R/R SPIKE
 - SET R/R SPIKE
 - ⊙ GOVERNMENT CORNER
 - EXISTING FENCE



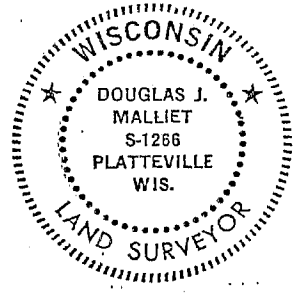
NOT TO SCALE THIS CONFORMS TO WISCONSIN ADMINISTRATIVE CODE A-E 5.02

SURVEYOR'S AFFIDAVIT:

STATE OF WISCONSIN)
GRANT COUNTY) SS

I hereby certify that I, DOUGLAS J. MALLIET, have complied with the Wisconsin State Statutes, Statutes of the United States, and the rules and regulations made by the Secretary of the Interior in the location of the corner shown above.

DATE OF SURVEY: 3-5-83 Douglas J. Malliet
REGISTERED LAND SURVEYOR
1266



D. F. BURBACH MUNICIPAL & CIVIL ENGINEERS

410 NORTH SECOND STREET • PLATTEVILLE, WISCONSIN 53818 • (608) 348-3262

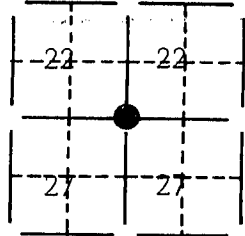
MAY 2 4 1983

U. S. PUBLIC LAND SURVEY MONUMENT RECORD FOR GRANT COUNTY, WISCONSIN

Note: This form is intended and designed to fulfill all requirements of Wisconsin Administrative Code, Chapter A-E7.08, U.S. Public Land Survey Monument Record (3)(a)(b)(c)(d)(e)(f)(g)(h)(i). Use additional sheet if necessary.

(a) The section, one quarter corner common to sections 22, 27,
Township(s) 02 N, Range(s) 02 W

State plane coordinates: N 227,855.5852
E 1,840,427.2102

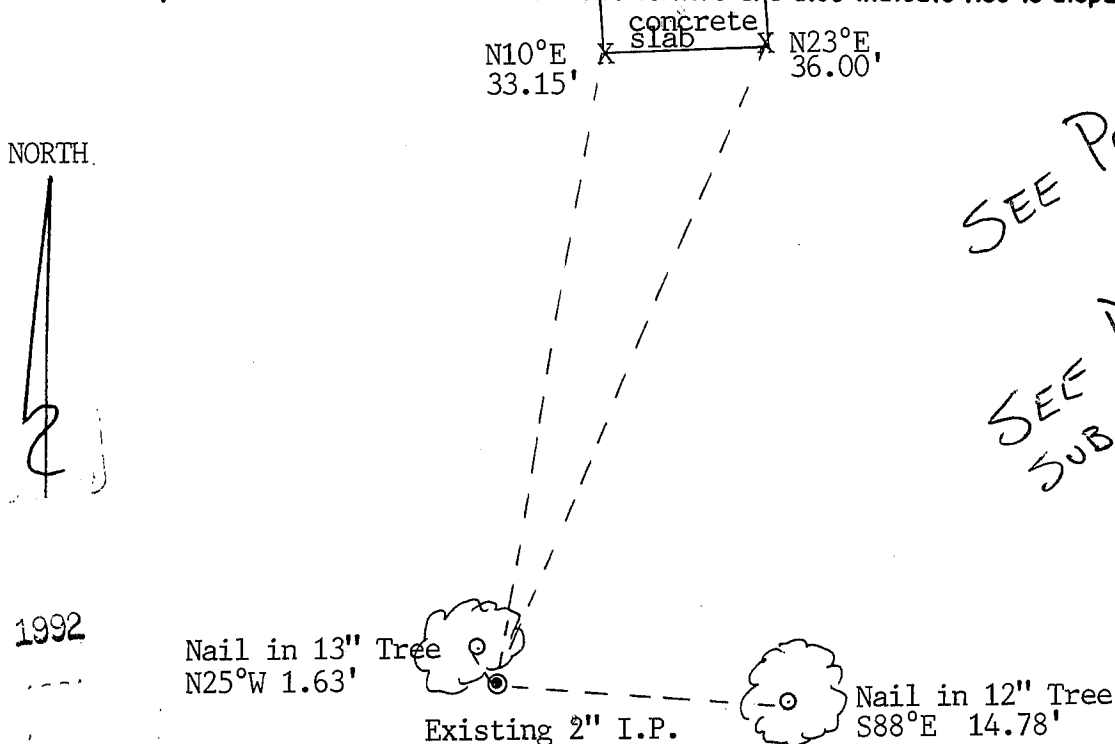


(b)(f)(g)(h) Description of monument found at this corner and if it was accepted, state all evidence (material, testimonial, occupational, plats, records, other monuments) used as a basis for accepting. If not accepted or nothing was found, state evidence used as basis for establishing location and what was set. If reestablished through lost corner proportionate methods, indicate all monuments, distances and directions used.

Found and accepted an existing 2" I.D. iron pipe at the N1/4 corner of section 27.



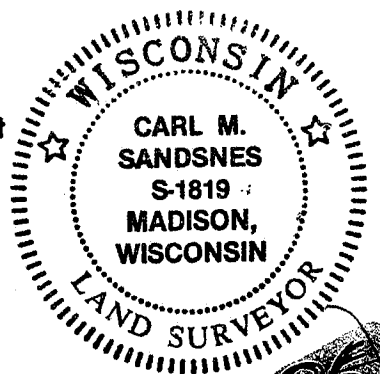
(c)(d)(e) Plan view of corner with ties to at least 4 witness monuments. If in disagreement with previously established corner, show the distances between the two corners and also indicate ties to disputed corner.



(i) I certify that the corner location on this record was determined by me or under my direction and control and that this U.S. Public Land Survey Monument Record is correct and complete to the best of my knowledge and belief.

[Signature]
Signature

OCT 30, 1991
Date



Filed for record in Grant County Surveyor's Office on _____

86