

Prepare's Name: Kenneth L. Buesing Address: 1212 Locust St. Dubuque, IA Telephone: (563) 556-4389

SLSI 9-94

UNITED STATES PUBLIC LAND SURVEY MONUMENT RECORD

OF

Land Survey Monuments situated in Section 21, Township 2N, Range 2W, of the Fourth Principal Meridian, Grant County, Wisconsin. Previously recorded in NO PREVIOUS RECORDED RECORDS FOUND in County Recorder's Office.
(book, page, document number, etc.)

(Show reason for preparing this certificate, the evidence and detailed procedures used in establishing the corner positions and monumentation found or placed.)

Monument Description and Remarks: SET 3/4" ROD @ THE SW CORNER OF THE SW1/4, NE1/4. CORNER SET IN LINE WITH N 1/4 AND S 1/4 AND IN LINE WITH E 1/4 AND W 1/4.

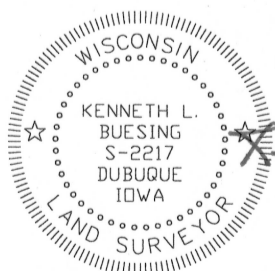
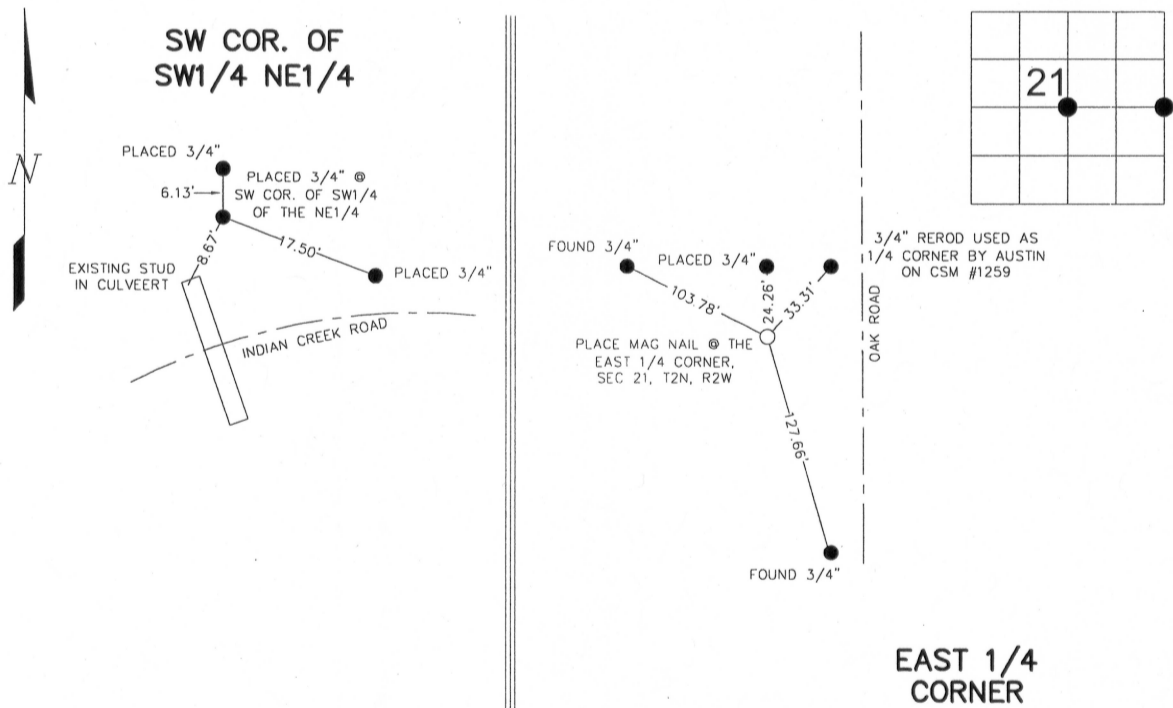
SET MAG NAIL @ THE EAST 1/4 CORNER IN LINE WITH THE NORTHEAST CORNER AND SOUTHEAST CORNER. RECORD

DISTANCES TO THE NORTHEAST AND SOUTHEAST CORNER WERE MATCHED AS WELL AS RECORD DISTANCE OFF

CENTERLINE U.S.H. 61. ALL INFORMATION FROM WISCONSIN DOT RECORDS.

PLAN - VIEW

(Show a minimum of three reference ties to durable physical objects, relevant monuments and physical conditions that will enable recovery of the corner.)



I HEREBY CERTIFY THAT THIS LAND SURVEYING DOCUMENT WAS PREPARED AND THE RELATED SURVEY WORK WAS PERFORMED BY ME OR UNDER MY DIRECT PERSONAL SUPERVISION AND THAT I AM A DULY LICENSED LAND SURVEYOR UNDER THE LAWS OF THE STATE OF WISCONSIN.
 Kenneth L. Buesing
 KENNETH L. BUESING (DATE) 30, Mar. 2010
 LICENSE NUMBER S-2217

Corners	Section	Twp	Range
SW COR. OF SW1/4, NE1/4	21	2N	2W
EAST 1/4 COR.	21	2N	2W

<p>1212 LOCUST ST, DUBUQUE, IA (563) 556-4389</p>	MONUMENT RECORD		
	COUNTY: <u>GRANT</u> TOWNSHIP: <u>PARIS</u>	DATE PLOTTED: <u>03-30-10</u> DATE REVISED:	FIELD BOOK # PAGE #