

UNITED STATES PUBLIC LAND SURVEY MONUMENT RECORD  
GRANT COUNTY, WISCONSIN

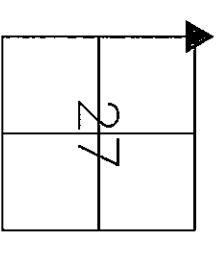
SECTION 27, TOWNSHIP 2 NORTH, RANGE 2 WEST OF THE 4TH P.M.

HISTORY OF CORNER:

ORIGINAL CORNER SET IN 1833 BY LUCIUS LYON. IN 1982, DOUGLAS MALLETT FOUND A 2" IRON PIPE AT CORNER AND PLACED AN ALUMINUM MONUMENT AT IT'S LOCATION.

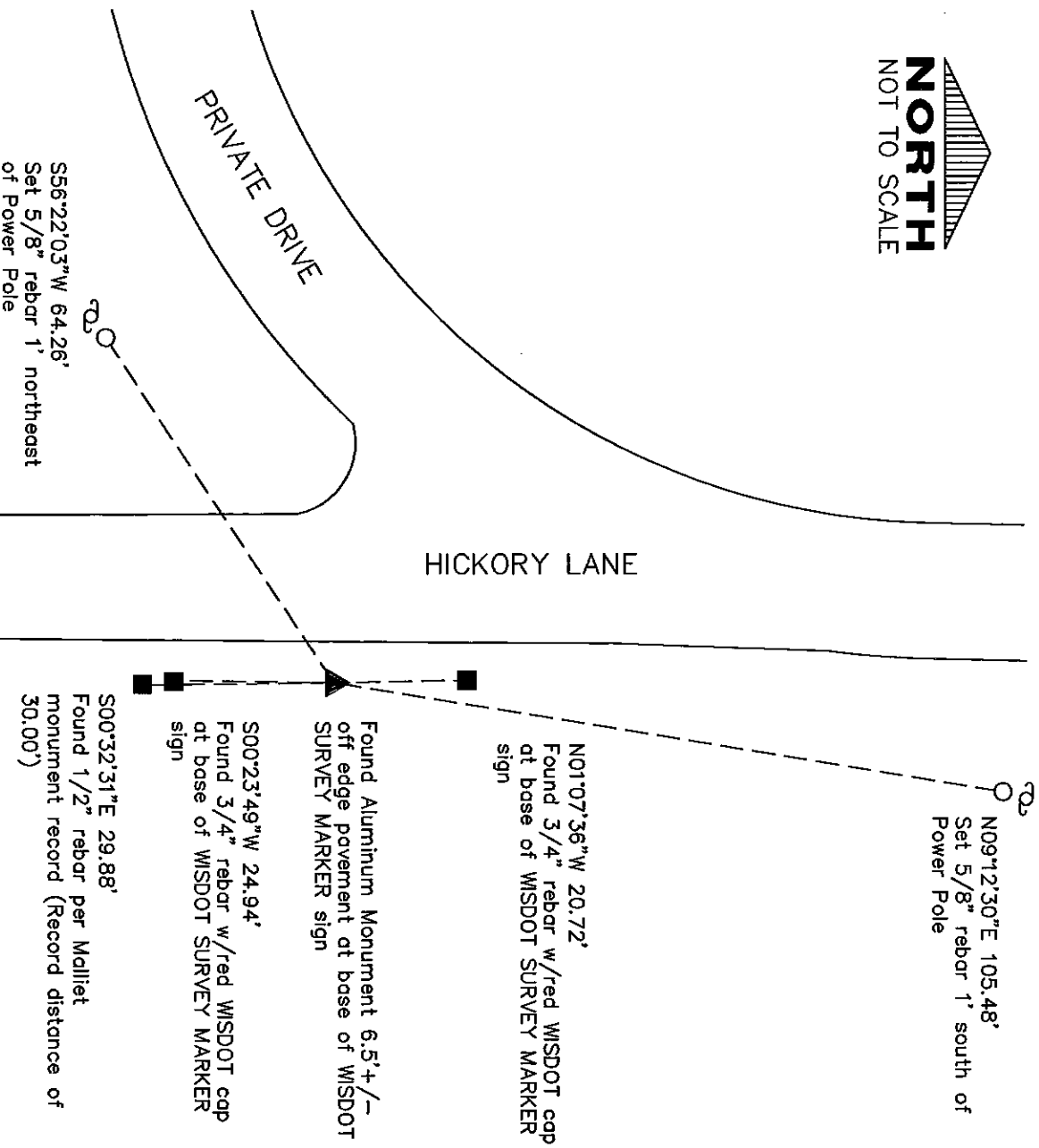
DESCRIPTION OF CORNER AND EVIDENCE FOUND:

FOUND BERNITSEN ALUMINUM MONUMENT LABELED "VILLAGE OF DICKEYVILLE - D. F. BURBACH MUNICIPAL & CIVIL ENGINEERS" AT LOCATION. FOUND ONE THE PER MALLETT CORNER CERTIFICATE AND TWO WISDOT TIES OF UNKNOWN ORIGIN. ACCEPTED CORNER AND PLACED NEW SWING TIES AS SHOWN BELOW.



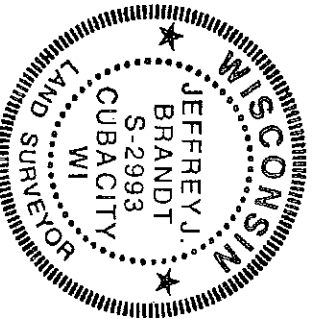
NORTHWEST CORNER  
SEC 27, T2N, R2W  
TOWN OF PARIS  
CORNER NUMBER 87

PLAN - VIEW



I, Jeffrey J. Brandt certify that the corner location shown on this record was determined by me or under my direction and control and that this U.S. Public Land Survey Monument Record is correct and complete to the best of my knowledge and belief.

Signature Jeffrey J. Brandt Date 6-18-15



Iiw, P.C.		ARCHITECTURE	
INTEGRITY EXPERTISE SOLUTIONS		CIVIL ENGINEERING	
www.iwengr.com • 800.556.4191		CONSTRUCTION SERVICES	
DRAWN JUB		ENVIRONMENTAL ENGINEERING	
CHECKED BMR		LAND SURVEYING	
DATE 6-11-15		MUNICIPAL ENGINEERING	
FIELD BK. 422		STRUCTURAL ENGINEERING	
PROJ. NO. 14209		TRANSPORTATION ENGINEERING	
SHEET 1 of 1			
P:\14\209\DRAWINGS\SURVEY\14209 CORNER CERTS			

Paris Township

# US. PUBLIC LAND SURVEY MONUMENT RECORD

CORNER DESCRIPTION: NW CORNER, SECTION 27, T 2 N, R 2 W

STATE PLANE COORDINATES: N \_\_\_\_\_, E \_\_\_\_\_

THETA ANGLE: \_\_\_\_\_

HORIZONTAL DATUM: WISCONSIN STATE PLANE COORDINATE SYSTEM, SOUTH ZONE

EVIDENCE: FOUND 2" IRON PIPE OF RECORD, IN GOOD CONDITION

MONUMENT: FOUND , PLACED

METHOD OF RESTORATION (RE-ESTABLISHMENT):

ACCEPTED EXISTING MONUMENT

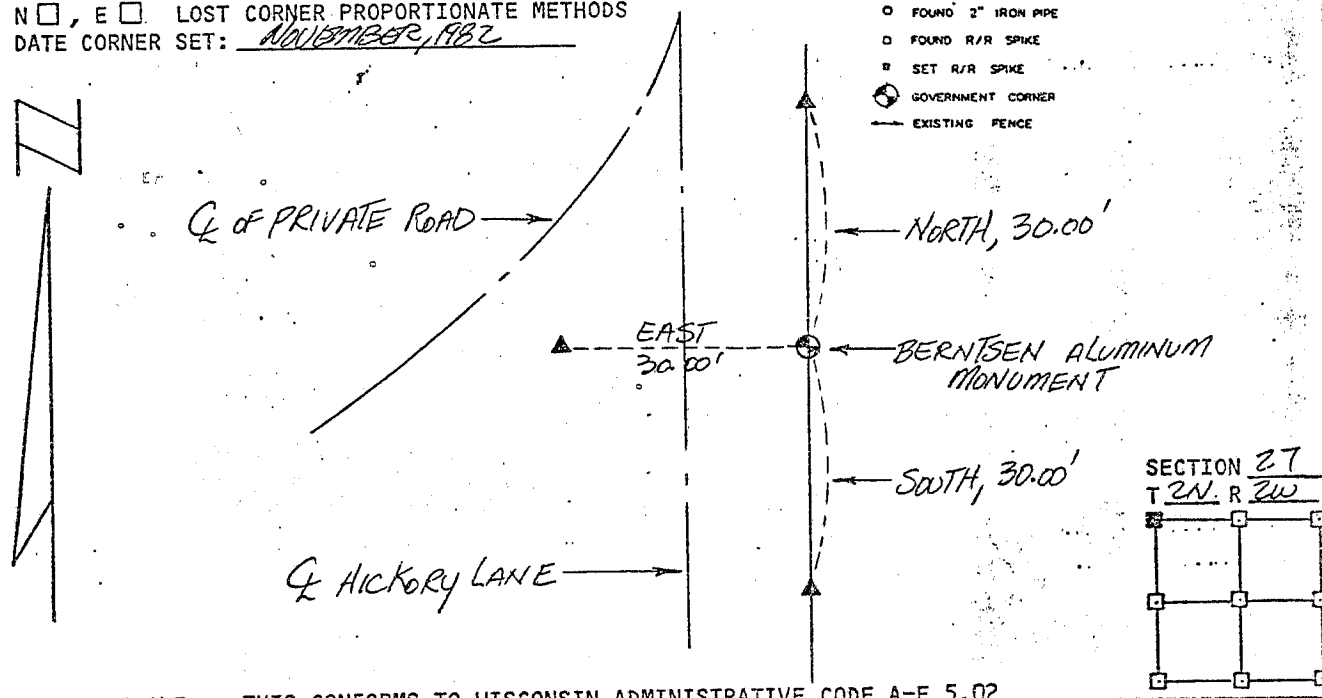
N , E  ACCEPTED OCCUPATION

N , E  LOST CORNER PROPORTIONATE METHODS

DATE CORNER SET: NOVEMBER, 1982

### LEGEND

- ▲ SET #6 REBAR, 113 LBS PER LINEAL FT. MIN. WT.
- SET 1" X 24" IRON PIPE, 113 LBS. PER LINEAL FT. MIN. WT.
- SET 2" X 30" IRON PIPE, 3.65 LBS. PER LINEAL FT. MIN. WT.
- FOUND 1" IRON PIPE
- FOUND 2" IRON PIPE
- FOUND R/R SPIKE
- SET R/R SPIKE
- ⊙ GOVERNMENT CORNER
- EXISTING FENCE



NOT TO SCALE THIS CONFORMS TO WISCONSIN ADMINISTRATIVE CODE A-E 5.02

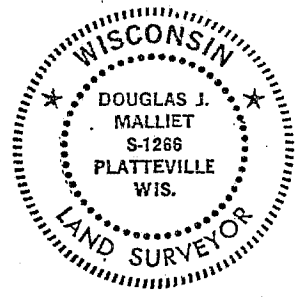
### SURVEYOR'S AFFIDAVIT:

STATE OF WISCONSIN)  
GRANT COUNTY) ss

I hereby certify that I, DOUGLAS J. MALLIET, have complied with the Wisconsin State Statutes, Statutes of the United States, and the rules and regulations made by the Secretary of the Interior in the location of the corner shown above.

DATE OF SURVEY: 3-5-83

Douglas J. Malliet  
REGISTERED LAND SURVEYOR  
# 01266



## D. F. BURBACH MUNICIPAL & CIVIL ENGINEERS

410 NORTH SECOND STREET • PLATTEVILLE, WISCONSIN 53818 • (608) 343-3262

MAY 24 1983