

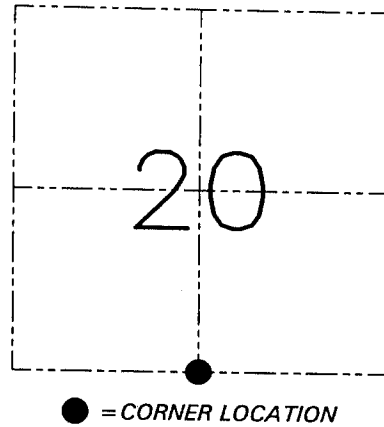
**U.S. PUBLIC LAND SURVEY MONUMENT RECORD - GRANT COUNTY, WI**  
 Section 20, Town 2 North Range 2 West, Town of Paris

**CERTIFICATE**

I, Larry L. Austin, do hereby certify that the corner location on this record was determined by me and/or under my direct supervision and that this U.S. public land survey monument record is correct and complete to the best of my knowledge and belief.

Dated this 21st day of December, 2001

*Larry L. Austin*  
 Larry L. Austin S-1903



**HISTORY OF CORNER ESTABLISHMENT**

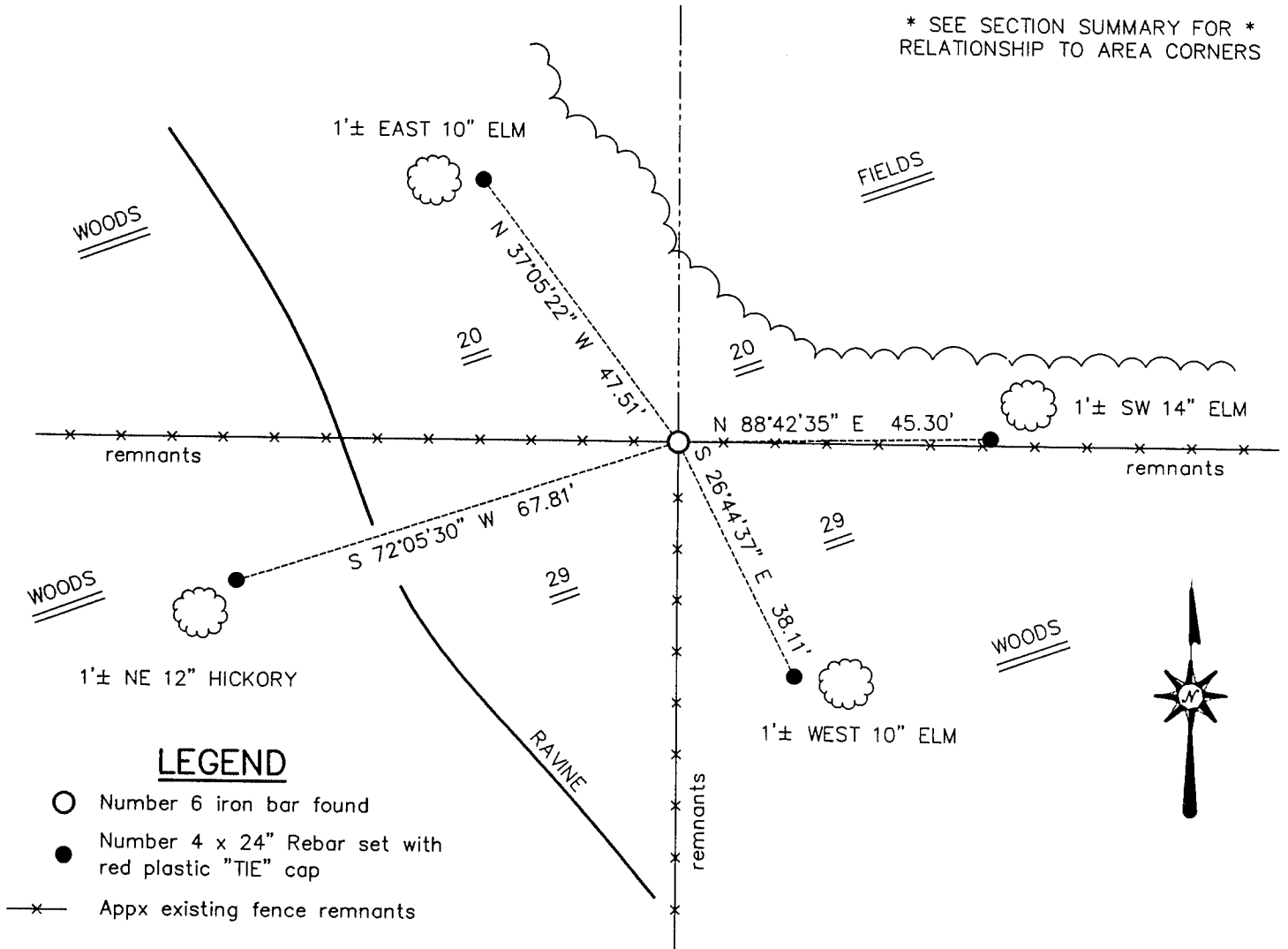
Corner was originally set in 1833 by Lucius Lyon.  
 George McFall placed a rock at this location. (No date)

**DESCRIPTION OF CORNER EVIDENCE FOUND**

I was unable to locate the rock placed by George McFall. I did find a #6 iron bar at an occupied fence corner and accepted it's location after an EDM & GPS traverse of the area.

**DESCRIPTION OF CORNER AND WITNESS MONUMENTS, references and accessories used to perpetuate the original or re-established location of this corner. Witnesses to the corner location Bobby Sedgwick & Shane Austin & Brad Digman**

**SKETCH:**



**LEGEND**

- Number 6 iron bar found
- Number 4 x 24" Rebar set with red plastic "TIE" cap
- x— Appx existing fence remnants

SKETCH NOT TO SCALE

**AUSTIN ENGINEERING, LLC**

4211 HWY 81 EAST, LANCASTER, WI 53813  
 PHONE 608-723-6363 FAX 608-723-6702

FIELDBOOK: SDR33, 2106  
 G: \T2NR2W\20A  
 C: \SWA\TIE\T2NR2W\90  
 CREW: BS-SB-SA-BD

DRAWN BY: SW AUSTIN  
 APPROVED: LL AUSTIN

**CORNER NUMBER 90**