

#JOHN

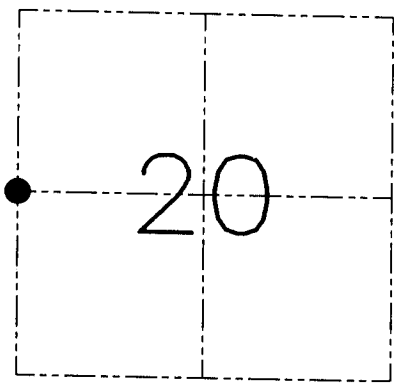
U.S. PUBLIC LAND SURVEY MONUMENT RECORD - GRANT COUNTY, WI
Section 20, Town 2 North Range 2 West, Town of Paris

CERTIFICATE

I, Larry L. Austin, do hereby certify that the corner location on this record was determined by me and/or under my direct supervision and that this U.S. public land survey monument record is correct and complete to the best of my knowledge and belief.

Dated this 21st day of December, 2001

Larry L. Austin
Larry L. Austin S-1903



● = CORNER LOCATION

HISTORY OF CORNER ESTABLISHMENT

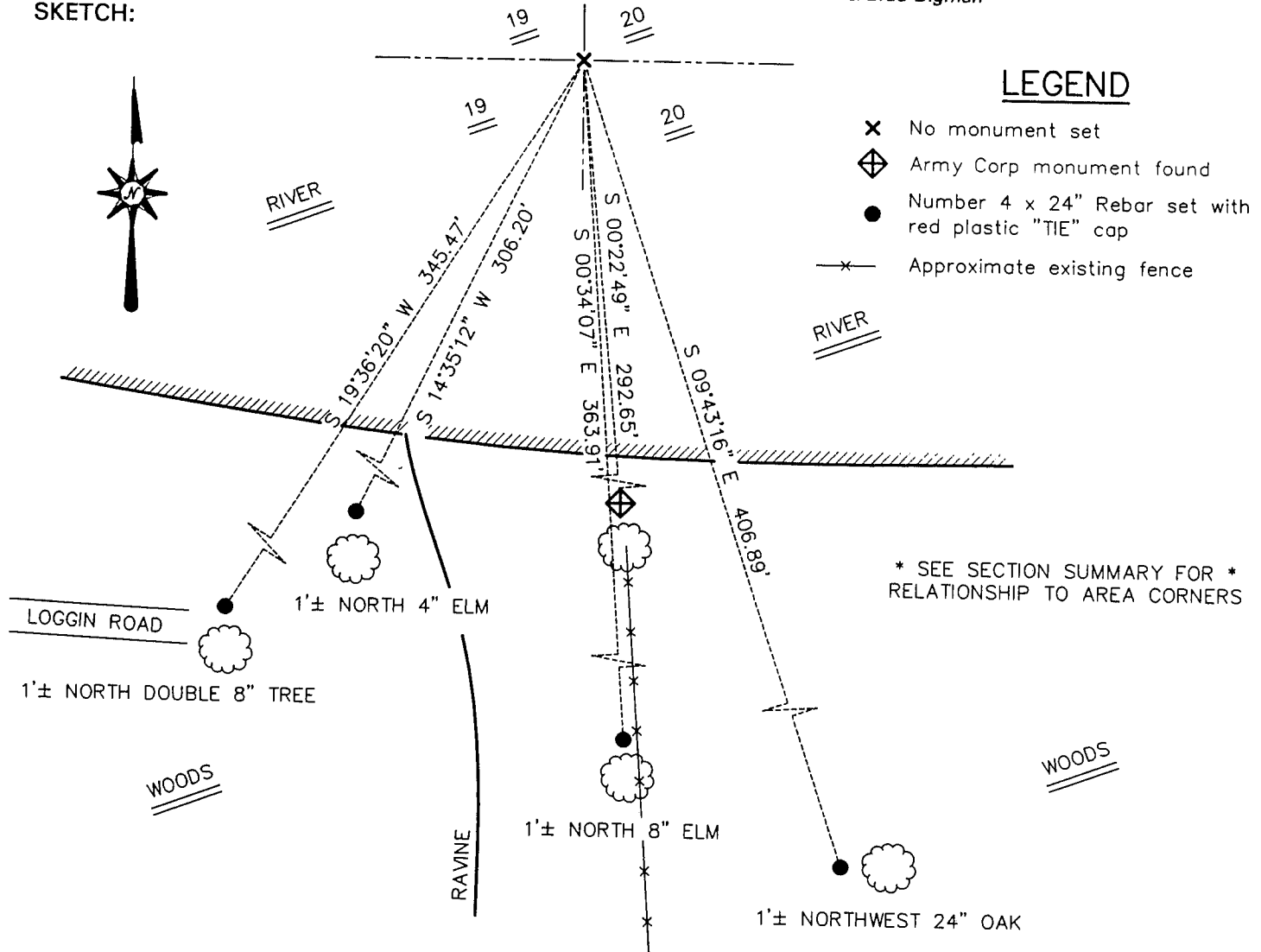
Corner was originally set in 1833 by Lucius Lyon. In 1938 the Army Corp of Engineers set a reference point on the Southern bank of the Platte River.

DESCRIPTION OF CORNER EVIDENCE FOUND

I found the reference point on the Southern bank of the Platte River. I held it for the Easting of the corner. I proportioned the corner for the North-South location between the Northwest and Southwest corners. Verified it's location using EDM & GPS methods.

DESCRIPTION OF CORNER AND WITNESS MONUMENTS, references and accessories used to perpetuate the original or re-established location of this corner. Witnesses to the corner location Bobby Sedgwick & Shane Austin & Brad Digman

SKETCH:



SKETCH NOT TO SCALE

AUSTIN ENGINEERING, LLC
4211 HWY 81 EAST, LANCASTER, WI 53813
PHONE 608-723-6363 FAX 608-723-6702

FIELDBOOK: SDR33, 2106
G: \T2NR2W\20A
C: \SWA\TIE\T2NR2W\75
CREW: BS-SB-SA-BD

DRAWN BY: SW AUSTIN
APPROVED: LL AUSTIN

CORNER NUMBER 75