

U.S. PUBLIC LAND SURVEY MONUMENT RECORD - GRANT COUNTY, WI

Section 17, Town 2 North, Range 2 West, Town of Paris

(a)

NOTE: This form is intended and designed to fulfill all requirements of Wisconsin Administrative Code: Chapter A-E 7.08, U.S. Public Land Survey Monument Record (3) (a) (b) (c) (d) (e) (f) (g) (h) (i). "An additional sheet *may* be added if necessary to conform with said requirements.

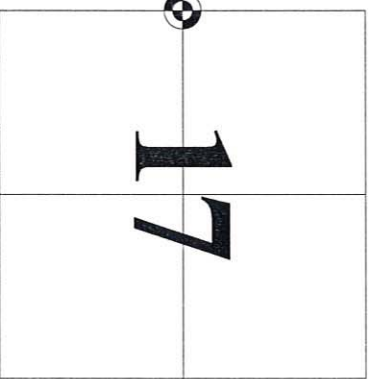
CERTIFICATE:

(i)

I, John Krebs, do hereby certify that the corner location on this record was determined by me and/or under my direct supervision and that this U.S. Public Land Survey Monument Record is correct and complete to the best of my knowledge and belief.

Dated this 4th day of April, 2012.

John Krebs 4-23-12
 John Krebs, S-1878



CORNER LOCATION

HISTORY OF CORNER ESTABLISHMENT:

Corner was reset by Bruce D. Bowden on August 15, 2001.
 Michael S. O'Keefe, S-2743, located corner on July 6, 2011, before road construction began.

DESCRIPTION OF CORNER EVIDENCE FOUND:

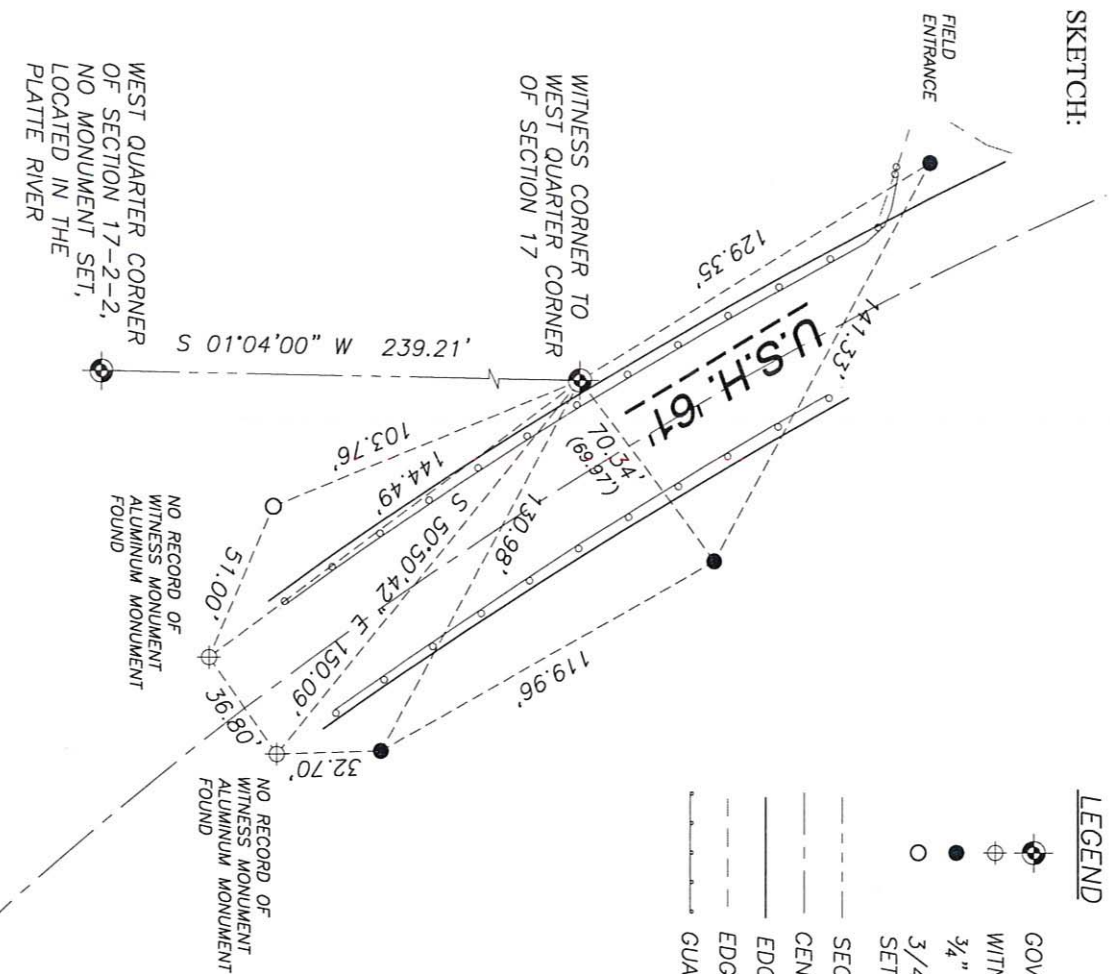
Found 1-1/4" rebar at the Witness corner and three ties per tie sheet by Bruce D. Bowden, S-1250, dated August 15, 2001. I set one additional tie and found another tie as shown hereon.

(b) (f) (g) (h)

Witnesses to corner location _____

DESCRIPTION OF CORNER AND WITNESS MONUMENTS: references and accessories used to perpetuate the original or re-established location of this corner. (c) (d) (e)

SKETCH:



LEGEND

- GOVERNMENT CORNER
- WITNESS MONUMENT FOUND
- 3/4" REBAR FOUND
- 3/4" x 24" REBAR SET (1.50 LBS/LF)
- SECTION LINE
- CENTERLINE
- EDGE OF PAVEMENT
- EDGE OF GRAVEL
- GUARD OR SAFETY RAIL



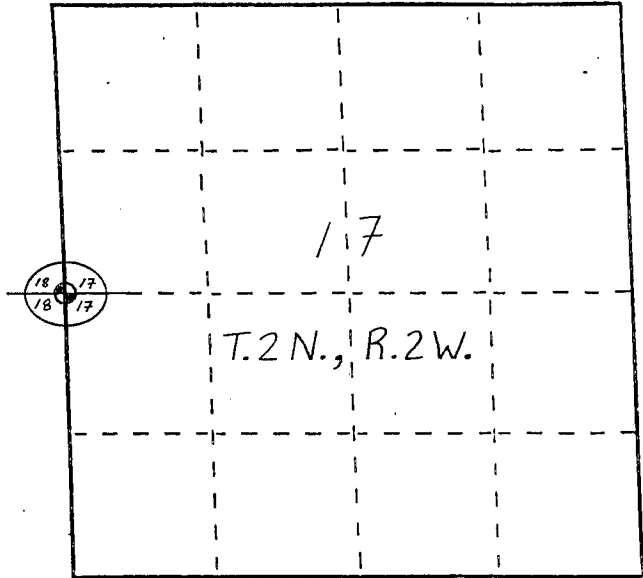
U. S. PUBLIC LAND SURVEY MONUMENT RECORD

INSTRUCTIONS: This record shall show the location of the corner and shall include all of the following nine elements (a through i).

(a) Identify the corner by reference to the U.S. public land survey system.

○ = Corner monument restored.

Witness Corner to the West Quarter Corner of Section 17, Town 2 North, Range 2 West, Paris Township, Grant County, Wisconsin,

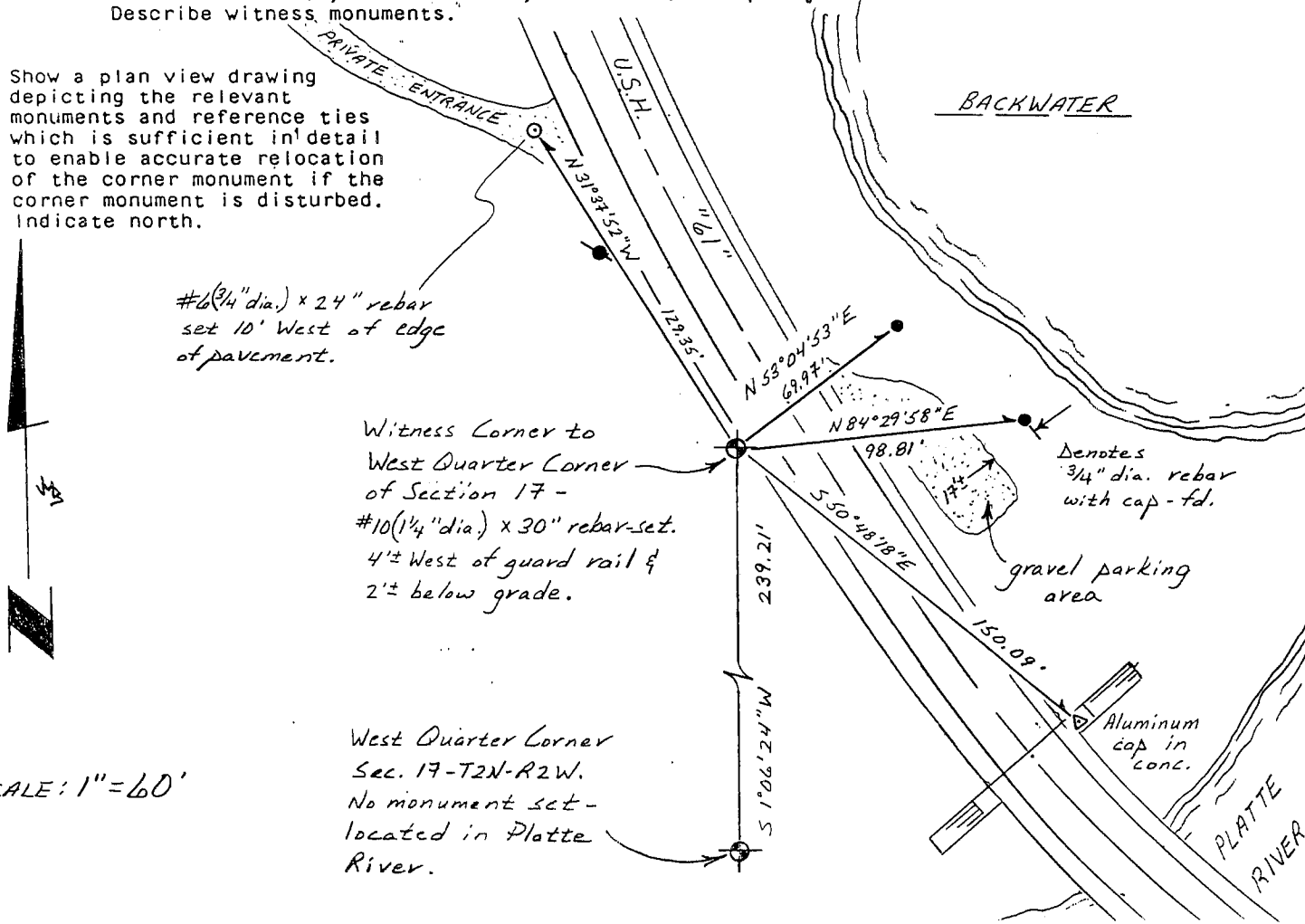


(b) Describe any record evidence, monument evidence, occupational evidence, testimonial evidence or any other material evidence you considered, and whether the monument was found or placed.

A #10 (1 1/4" dia.) rebar was set from remaining ties noted on a tie sheet by Timothy J. Moore (3-16-1988). The 3/4" dia. rebar he notes as the Witness Corner appears to have been buried under 6-8' of fill and gravel to improve the highway in years since his tie sheet.

(c) In the plan view drawing below, provide reference ties to at least 4 witness monuments, or, if the location is within a municipality, to at least 2 witness monuments. (Witness monuments shall be made of concrete, natural stone, iron or other equally durable material) Describe witness monuments.

(d) Show a plan view drawing depicting the relevant monuments and reference ties which is sufficient in detail to enable accurate relocation of the corner monument if the corner monument is disturbed. Indicate north.



#6 (3/4" dia.) x 24" rebar set 10' West of edge of pavement.

Witness Corner to West Quarter Corner of Section 17 - #10 (1 1/4" dia.) x 30" rebar set. 4'± West of guard rail & 2'± below grade.

West Quarter Corner Sec. 17-T2N-R2W. No monument set - located in Platte River.

SCALE: 1" = 60'

(e) Describe any material discrepancy between the location of the corner as restored or reestablished and the location of that corner as previously restored or reestablished by distance and direction. Show the discrepancy on the plan view drawing under (d), above. Show the distances between the corner as previously restored or reestablished and (1) the corner as restored or reestablished, and (2) to at least 2 of the witness monuments shown on the drawing in (d), above.

None.

(f) Was the corner restored through acceptance of (1) an obliterated evidence location, or, (2) a found perpetuated location?

A found perpetuated location.

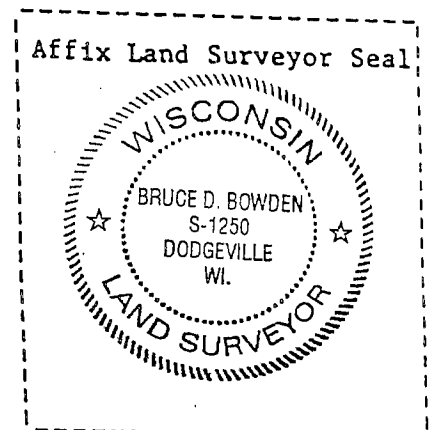
(g&h) Was the corner reestablished through lost corner proportionate methods? If so, show the method, including the directions and distances to other public land survey corners used as evidence or used for proportioning in determining the corner location?

No.

(1) I, Bruce D. Bowden
(type or print name) certify that the corner location shown on this record was determined by me or under my direction and control and that this U.S. Public Land Survey Monument Record is correct and complete to the best of my knowledge and belief.

Bruce D. Bowden
Signature

Aug 15, 2001
Date



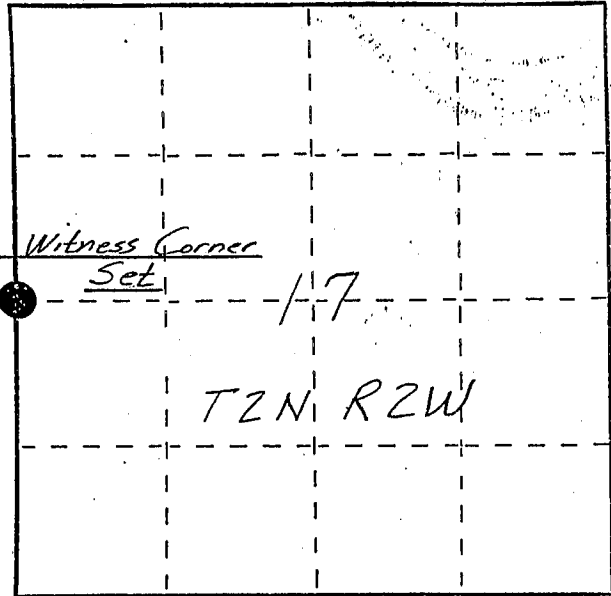
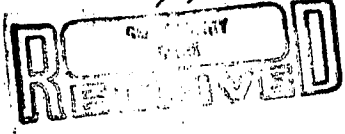
U. S. PUBLIC LAND SURVEY MONUMENT RECORD

INSTRUCTIONS: This record shall show the location of the corner and shall include all of the following nine elements (a through i).

(a) Identify the corner by reference to the U.S. public land survey system.

● = Corner monument restored.

W 1/4 corner section 17
T2N R2W of the
4th P.M.
Town of Paris
Grant County, Wisconsin



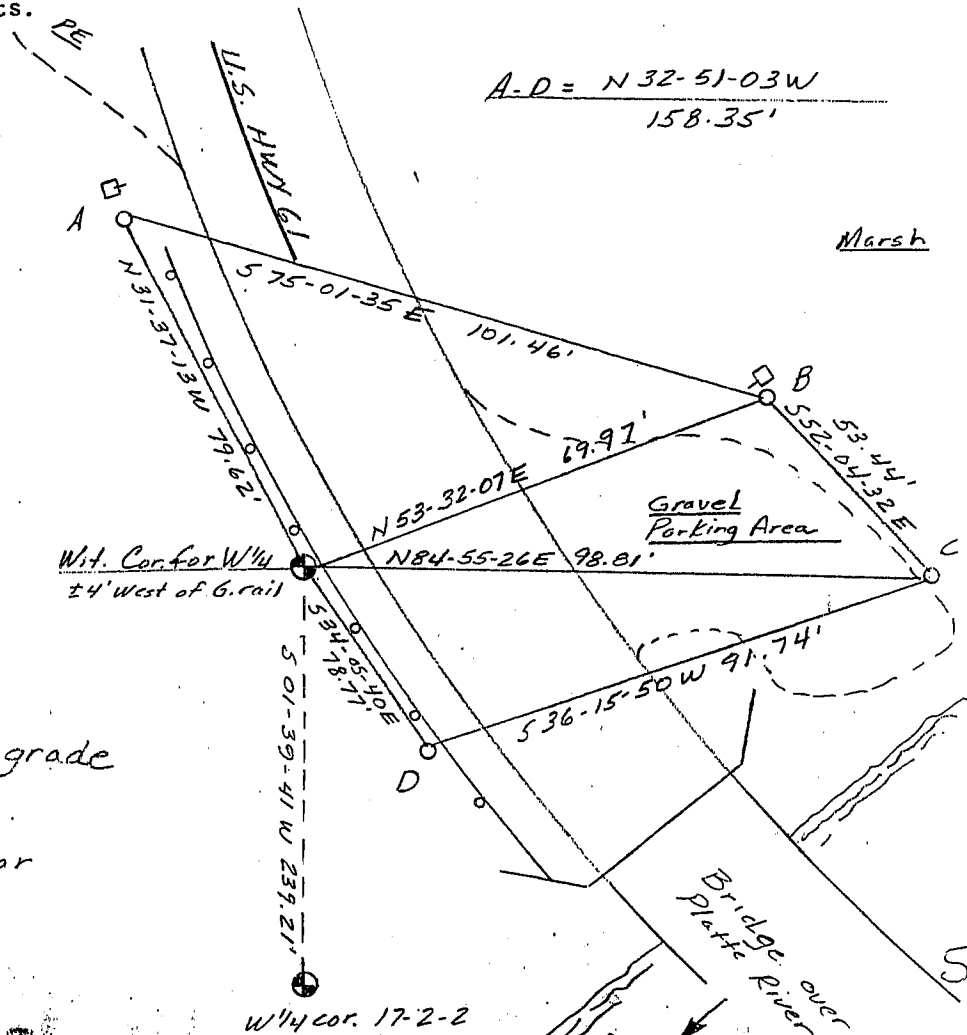
APR 27 1988

(b) Describe any record evidence, monument evidence, occupational evidence, testimonial evidence or any other material evidence you considered, and whether the monument was found or placed.

Corner falls in Platte River. A witness corner was set on the southerly shoulder of U.S. hwy. 61. A permanent monument will be placed after a planned construction project on hwy 61. Corner position was determined by using information and actual monuments from a 1937 C.O.E. survey. Corner position falls halfway between and on line with the reestablished NW and SW corners of said section 17.

(c) In the plan view drawing below, provide reference ties to at least 4 witness monuments, or, if the location is within a municipality, to at least 2 witness monuments. (Witness monuments shall be made of concrete, natural stone, iron or other equally durable material, ~~except wood.~~) Describe witness monuments.

(d) Show a plan view drawing depicting the relevant monuments and reference ties which is sufficient in detail to enable accurate relocation of the corner monument if the corner monument is disturbed. Indicate north.



No Scale
Bearings - Wis. Grid

● 3/4" x 5 foot rebar with aluminum cap set at grade

○ Ref. mon. - 3/4" x 24" rebar w/cap

W 1/4 cor. 17-2-2

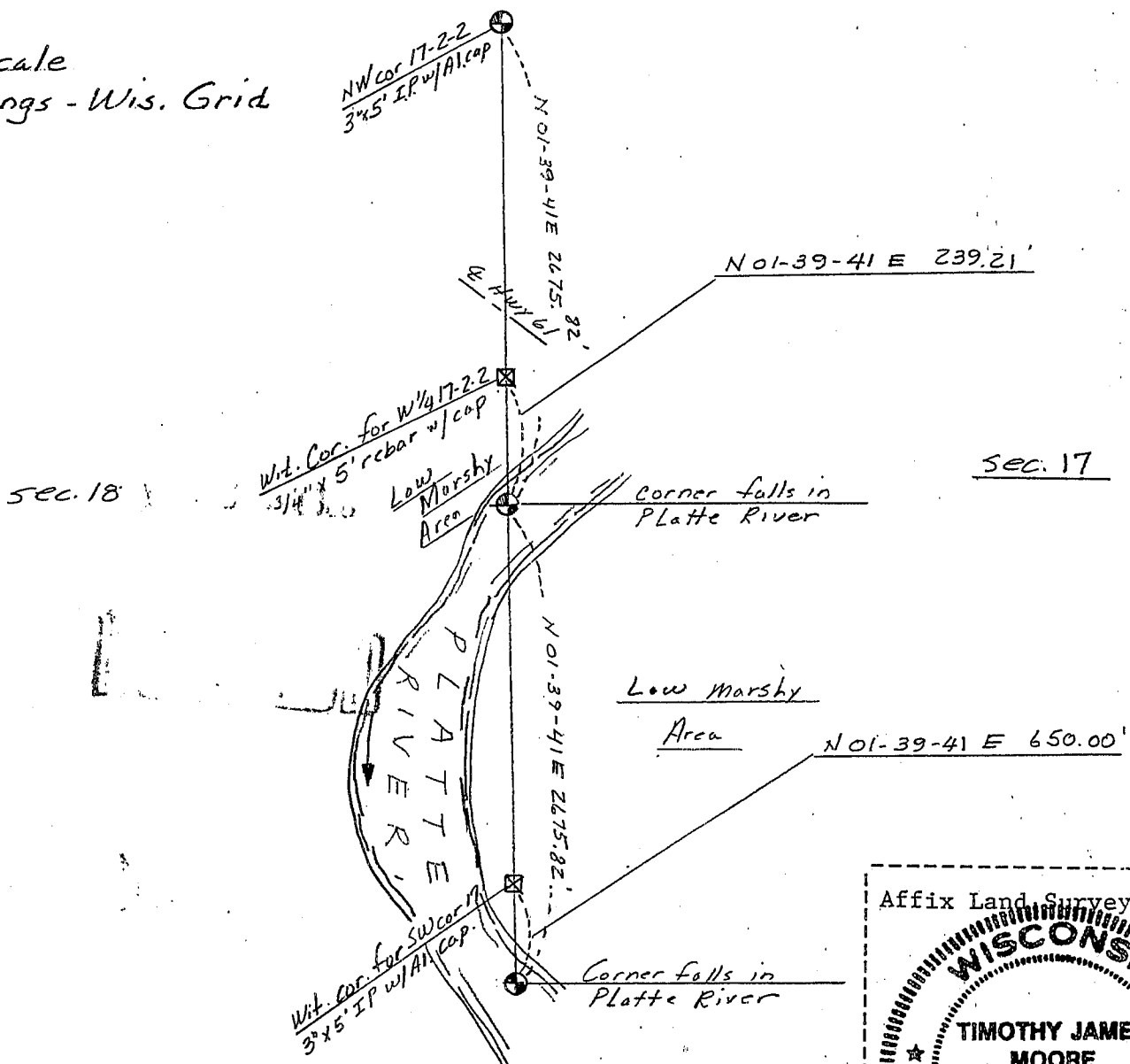
(e) Describe any material discrepancy between the location of the corner as restored or reestablished and the location of that corner as previously restored or reestablished by distance and direction. Show the discrepancy on the plan view drawing under (d), above. Show the distances between the corner as previously restored or reestablished and (1) the corner as restored or reestablished, and (2) to at least 2 of the witness monuments shown on the drawing in (d), above.

(f) Was the corner restored through acceptance of (1) an obliterated evidence location, or, (2) a found perpetuated location?

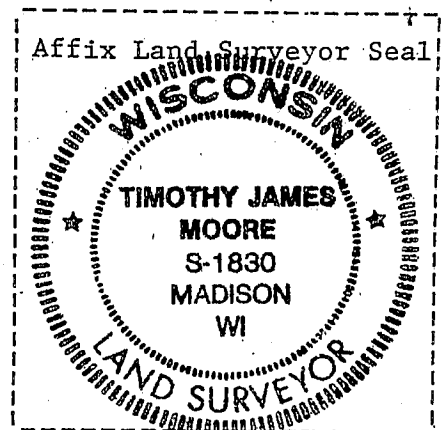
(g&h) Was the corner reestablished through lost corner proportionate methods? If so, show the method, including the directions and distances to other public land survey corners used as evidence or used for proportioning in determining the corner location?



No Scale
Bearings - Wis. Grid



(i) I, Timothy J. Moore
(type or print name) certify that the corner location shown on this record was determined by me or under my direction and control and that this U.S. Public Land Survey Monument Record is correct and complete to the best of my knowledge and belief.



Timothy J. Moore
Signature

3-16-88
Date