

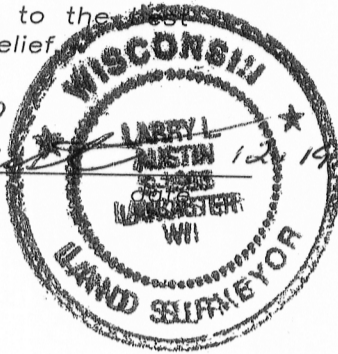
# U.S. PUBLIC LAND SURVEY MONUMENT RECORD

Section 18, Town 2 North Range 2 West, Town of Paris, Grant County, Wisconsin

## CERTIFICATE

I, Larry L. Austin, do hereby certify that the corner location on this record was determined by me and/or under my direct supervision and that this U.S. public land survey monument record is correct and complete to the best of my knowledge and belief.

*Larry L. Austin*  
 Larry L. Austin, S-1903



● = CORNER LOCATION

## HISTORY OF CORNER

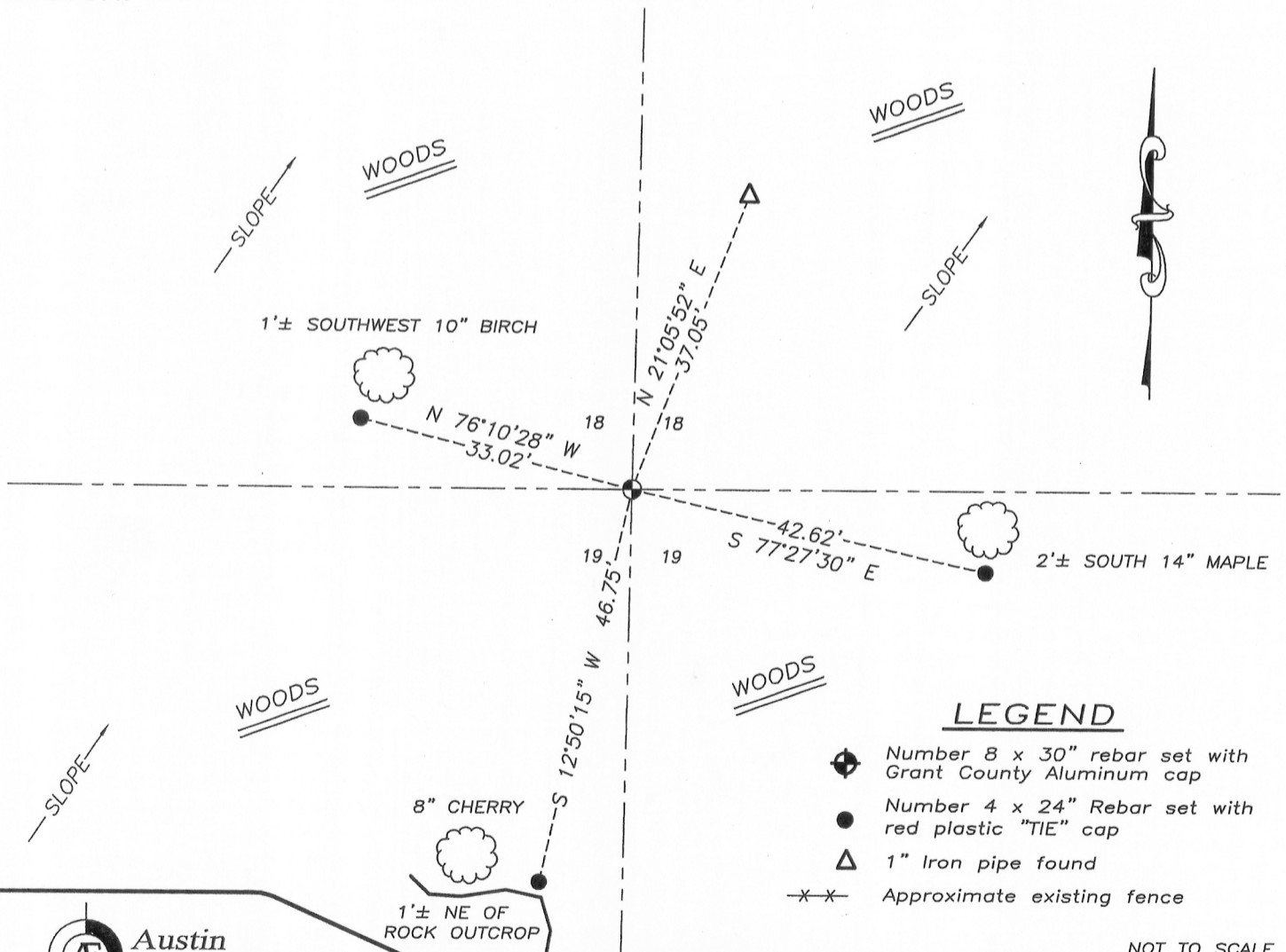
Corner was originally set in Lucius Lyon in 1833. In 1845 Struntz measured to the corner. In 1849 Struntz also shown the corner on a survey. In 1908 Appleby tied to new bearing trees. No other record of the corner was found.

## CORNER EVIDENCE FOUND

No evidence of the corner was found. Corner was reset online and proportioned between the Southeast and Southwest corners. This location was verified by E.D.M. and G.P.S. methods.

DESCRIPTION OF CORNER AND WITNESS MONUMENTS, references and accessories used to perpetuate the original or re-established location of this corner. Witnesses to monument location Bobby Sedgwick & Brad Digman & Shane Austin

## SKETCH:



## LEGEND

- ◆ Number 8 x 30" rebar set with Grant County Aluminum cap
- Number 4 x 24" Rebar set with red plastic "TIE" cap
- ▲ 1" Iron pipe found
- x-x- Approximate existing fence

NOT TO SCALE



**Austin Engineering LLC**  
 austinengineeringllc.com

4211 HWY 81 E, LANCASTER, WI 53813  
 PHONE: 608-723-6363 FAX: 608-723-6702

JOB NUMBER 02S338  
 FIELDBOOK: TDSR, 2227  
 G:\T2NR2W\PLATTE  
 H:\TIE\T2NR2W\72

DRAWN BY: SW AUSTIN  
 APPROVED: LL AUSTIN