

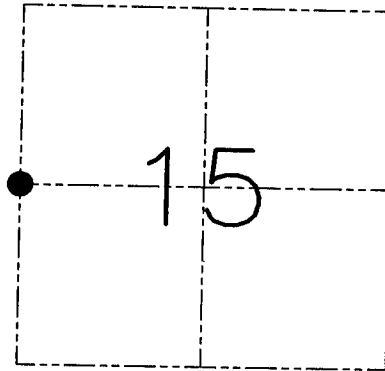
U.S. PUBLIC LAND SURVEY MONUMENT RECORD - GRANT COUNTY, WI
 Section 15, Town 2 North Range 2 West, Town of Paris

CERTIFICATE

I, Larry L. Austin, do hereby certify that the corner location on this record was determined by me and/or under my direct supervision and that this U.S. public land survey monument record is correct and complete to the best of my knowledge and belief.

Dated this 12th day of November, 2001

Larry L. Austin
 Larry L. Austin S-1903



● = CORNER LOCATION

HISTORY OF CORNER ESTABLISHMENT

Corner was originally set in 1832 by Lucius Lyon. In 1984 Douglas Malliet set a No 6 iron bar on the West line of Section 15. No other record of the corner was found.

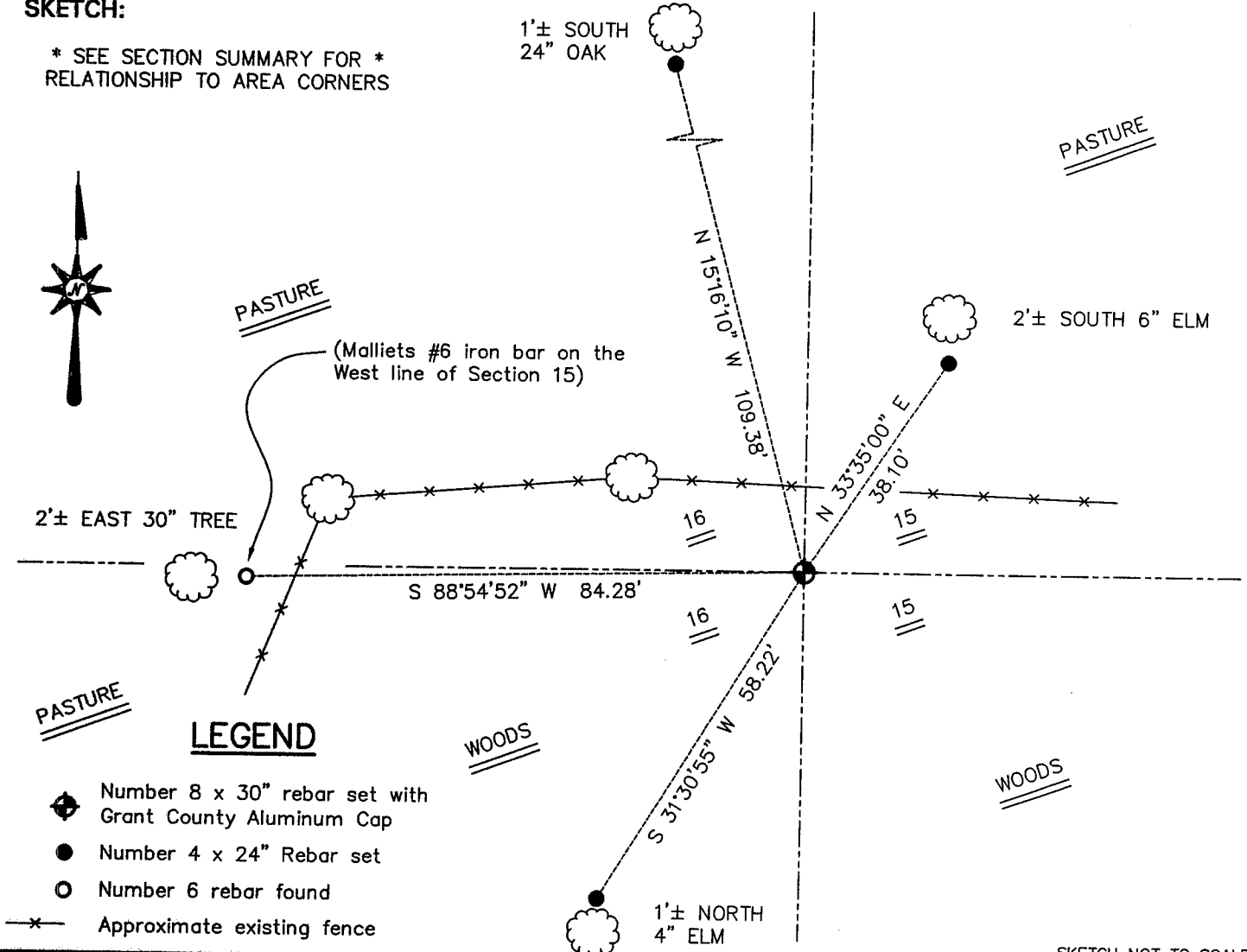
DESCRIPTION OF CORNER EVIDENCE FOUND

I found the No 6 iron bar and did not accept it's location after measuring the West line of Section 15. I reset the corner proportionately between the Northwest and Southwest corners of Section 15. Verified this location using EDM & GPS methods.

DESCRIPTION OF CORNER AND WITNESS MONUMENTS, references and accessories used to perpetuate the original or re-established location of this corner. Witnesses to the corner location Bobby Sedgwick & Shane Austin & Tim Fauver

SKETCH:

* SEE SECTION SUMMARY FOR *
 RELATIONSHIP TO AREA CORNERS



LEGEND

- ◆ Number 8 x 30" rebar set with Grant County Aluminum Cap
- Number 4 x 24" Rebar set
- Number 6 rebar found
- x— Approximate existing fence

SKETCH NOT TO SCALE

AUSTIN ENGINEERING, LLC
 4211 HWY 81 EAST, LANCASTER, WI 53813
 PHONE 608-723-6363 FAX 608-723-6702

FIELDBOOK: SDR33, 2106
 G: \T2NR2W\26DOT
 C: \SWA\TIE\T2NR2W\57
 CREW: BS-SB-SA-TF

DRAWN BY: SW AUSTIN
 APPROVED: LL AUSTIN

CORNER NUMBER 57