

GRANT COUNTY CERTIFIED LAND CORNER

CORNER NUMBER 65

CERTIFICATE:

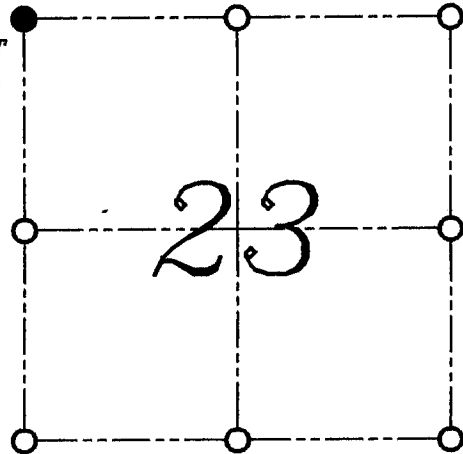
I, LARRY L. AUSTIN, DO HEREBY CERTIFY THAT ON FIRST DAY OF MAY, 1999, I FOUND MONUMENTED EVIDENCE OF THE NORTHWEST CORNER SECTION 23, TOWN 2 NORTH, RANGE 2 WEST, OF THE FOURTH PRINCIPAL MERIDIAN, AND I RE-ESTABLISHED SAID CORNER ACCORDING TO THE WISCONSIN STATUTES AS SHOWN AND DESCRIBED HEREON.

DATED THIS TWENTY-SECOND DAY OF MAY, 1999

Larry L. Austin
LARRY L. AUSTIN S-1903



SEAL



● = CORNER LOCATION
NORTHWEST CORNER OF
SECTION 23, T 2 N R 2 W
TOWN OF PARIS

HISTORY OF ORIGINAL CORNER ESTABLISHMENT:

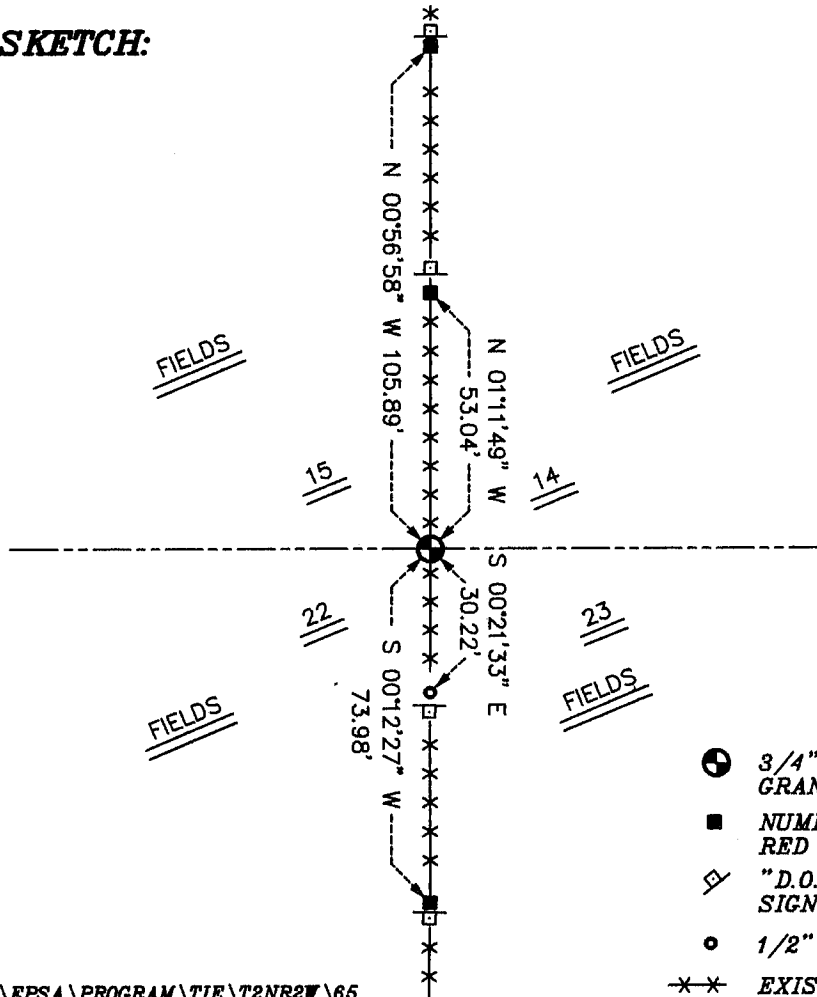
CORNER WAS SET IN 1833 BY LUCIUS LYON. IN 1983 DOUGLAS MALLIET SET THE CORNER.

DESCRIPTION OF CORNER EVIDENCE FOUND:

I FOUND AND ACCEPTED THE LOCATION USED BY MALLIET. VERIFIED THIS LOCATION USING E.D.M. AND G.P.S. METHODS.

DESCRIPTION OF CORNER AND WITNESS MONUMENTS, REFERENCES AND ACCESSORIES USED TO PERPETUATE THE ORIGINAL OR RE-ESTABLISHED LOCATION OF THIS CORNER:
WITNESS TO THE CORNER LOCATION: BOBBY SEDGWICK ; SHELBY BLINDERT

SKETCH:



LEGEND

- 3/4" IRON BAR FOUND AND SET A GRANT COUNTY ALUMINUM CAP ON IT
- NUMBER 4 X 24" REBAR SET WITH RED PLASTIC CAP AND SIGN
- ◇ "D.O.T. SURVEY MARKER NEARBY" SIGN SET
- 1/2" IRON BAR FOUND
- *-* EXISTING FENCE LOCATION

Grant Township

U.S. PUBLIC LAND SURVEY MONUMENT RECORD

CORNER DESCRIPTION: NE CORNER, SECTION 22, T 2 N, R 2 W

STATE PLANE COORDINATES: N _____, E _____

THETA ANGLE: _____

HORIZONTAL DATUM: WISCONSIN STATE PLANE COORDINATE SYSTEM, SOUTH ZONE

EVIDENCE: FOUND ANCIENT SET POST ON ANCIENT NORTH-SOUTH FENCE

MONUMENT: FOUND , PLACED

METHOD OF RESTORATION (RE-ESTABLISHMENT):

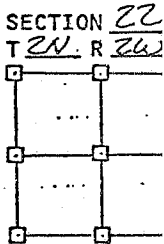
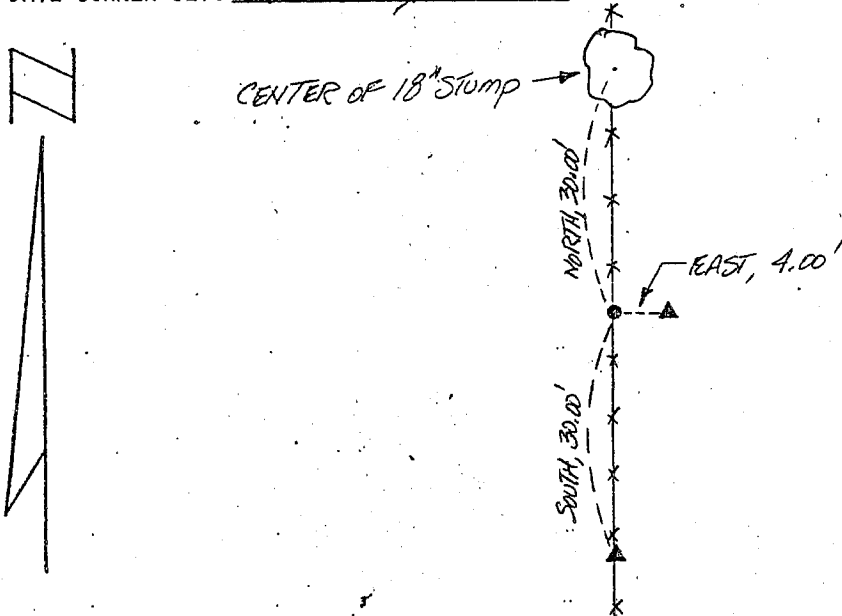
ACCEPTED EXISTING MONUMENT

N , E ACCEPTED OCCUPATION

N , E LOST CORNER PROPORTIONATE METHODS

DATE CORNER SET: NOVEMBER, 1962

- LEGEND**
- ▲ SET #6 REBAR, 1.13 LBS PER LINEAL FT. MIN. WT.
 - SET 1" X 24" IRON PIPE, 1.13 LBS PER LINEAL FT. MIN. W
 - SET 2" X 30" IRON PIPE, 3.65 LBS. PER LINEAL FT. MIN. W
 - FOUND 1" IRON PIPE
 - FOUND 2" IRON PIPE
 - FOUND R/R SPIKE
 - SET R/R SPIKE
 - ⊙ GOVERNMENT CORNER
 - EXISTING FENCE



NOT TO SCALE THIS CONFORMS TO WISCONSIN ADMINISTRATIVE CODE A-E 5.02

SURVEYOR'S AFFIDAVIT:

STATE OF WISCONSIN)
GRANT COUNTY) SS

I hereby certify that I, DOUGLAS J. MALLIET, have complied with the Wisconsin State Statutes, Statutes of the United States, and the rules and regulations made by the Secretary of the Interior in the location of the corner shown above.

DATE OF SURVEY: 3-5-83

Douglas J. Malliet
REGISTERED LAND SURVEYOR
1200



D. F. BURBACH MUNICIPAL & CIVIL ENGINEERS

410 NORTH SECOND STREET • PLATTEVILLE, WISCONSIN 53181 • (608) 348-3262

MAY 24 1983

165