

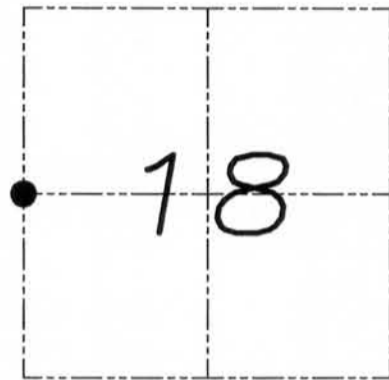
# U.S. PUBLIC LAND SURVEY MONUMENT RECORD

Section 18, Town 2 North Range 1 West, Town of Smelser, Grant County, Wisconsin

## CERTIFICATE

I, Larry L. Austin, do hereby certify that the corner location on this record was determined by me and/or under my direct supervision and that this U.S. public land survey monument record is correct and complete to the best of my knowledge and belief.

*Larry L. Austin*  
Larry L. Austin, S-1903



● = CORNER LOCATION

## HISTORY OF CORNER

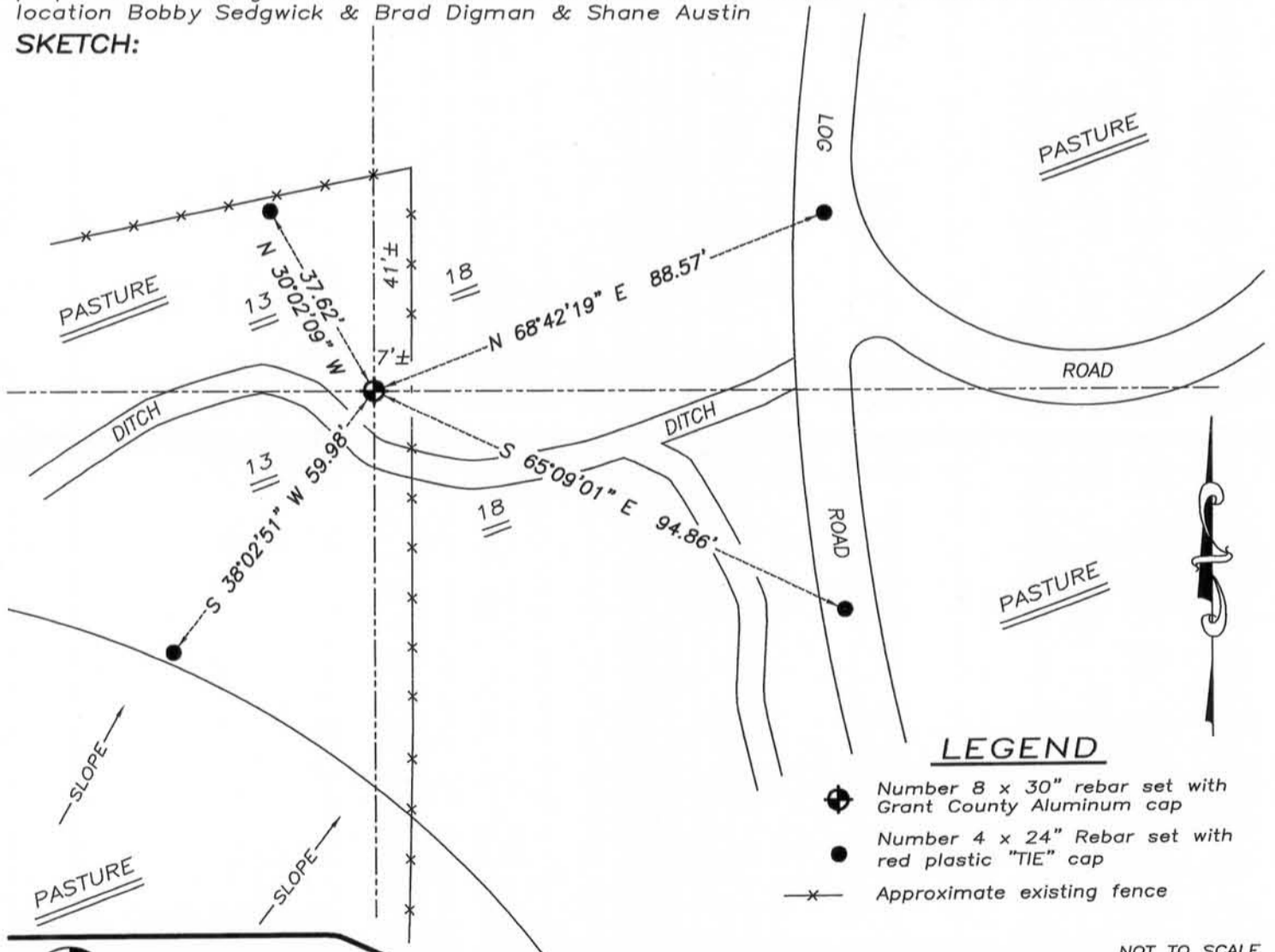
Corner was originally set in 1832 by Lyon. No other record of the corner was found.

## CORNER EVIDENCE FOUND

I set the corner proportionately between the Northwest and Southwest corners of Section 18. Verified this location using EDM & GPS methods.

**DESCRIPTION OF CORNER AND WITNESS MONUMENTS,** references and accessories used to perpetuate the original or re-established location of this corner. Witnesses to monument location Bobby Sedgwick & Brad Digman & Shane Austin

## SKETCH:



## LEGEND

- Number 8 x 30" rebar set with Grant County Aluminum cap
- Number 4 x 24" Rebar set with red plastic "TIE" cap
- x- Approximate existing fence

NOT TO SCALE

**Austin Engineering LLC**

4211 HWY 81 E, LANCASTER, WI 53813  
PHONE 608-723-6363 FAX 608-723-6702

JOB NUMBER 05S271  
FIELDBOOK: TDSR, 2812  
G:\T2NR1W\17  
H:\TIE\T2NR1W\54

DRAWN BY: SW AUSTIN  
APPROVED: LL AUSTIN

54

FEB 23 2011