

# GRANT COUNTY

## Survey Monument Record

TYPE OF MONUMENT GRANT Co. Alum. Monument  
 STATE PLANE COORDINATES: N \_\_\_\_\_  
 E \_\_\_\_\_  
 ELEVATION — M.S.L. DATUM: \_\_\_\_\_  
 THETA ANGLE: \_\_\_\_\_  
 FIELD BOOK: 94-02  
 PAGE 19

CORNER NO. \_\_\_\_\_  
 SECTION 13  
 TOWN 2N  
 RANGE 2W



LOCATION  
 (Indicated by "•")

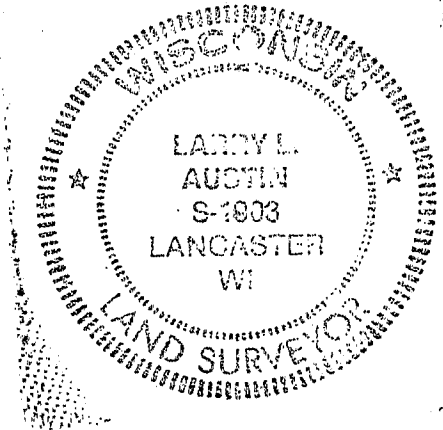
### BASIS FOR MONUMENT LOCATION

(Use reverse side if necessary)

Show info such as: History of corner, with reference to Vol. and pg., dates, surveyor; exact description of monument replaced; if location computed, by taped or EDM traverse; landowner, remarks, etc.

*NO RECORD FOUND SINCE ORIG. SURVEYS; CORNER SET AT PROJECTION OF FENCE LINES & VERIFIED BY EDM TRAVERSE OF AREA*

SEAL:



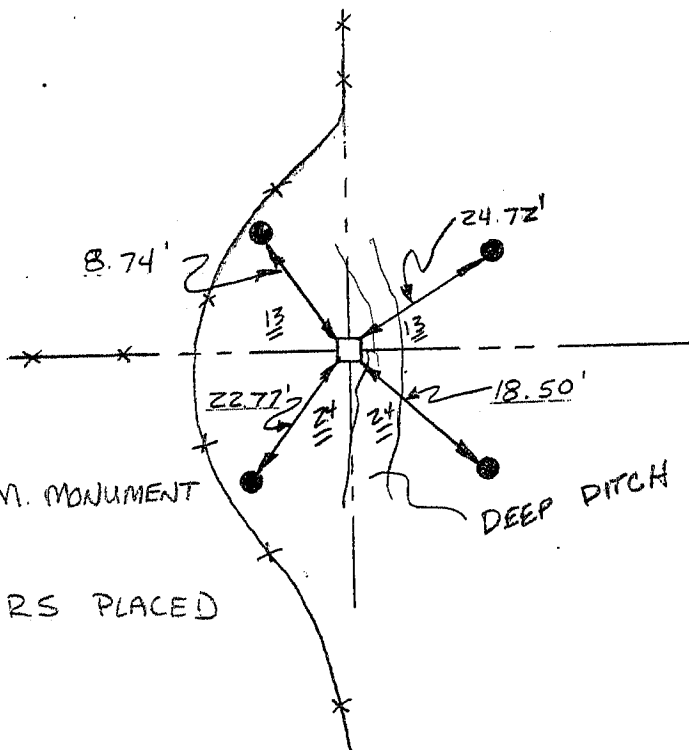
CERTIFIED CORRECT

*Larry L. Austin*  
 Registered Land Surveyor

DATE: 3/18/94

### TIE SKETCH

Show at least three (3) ties and monument



#### LEGEND

- GRANT CO. ALUM. MONUMENT
- 1/2" x 18" REBARS PLACED AS TIES

NO SCALE