

# GRANT COUNTY CERTIFIED LAND CORNER

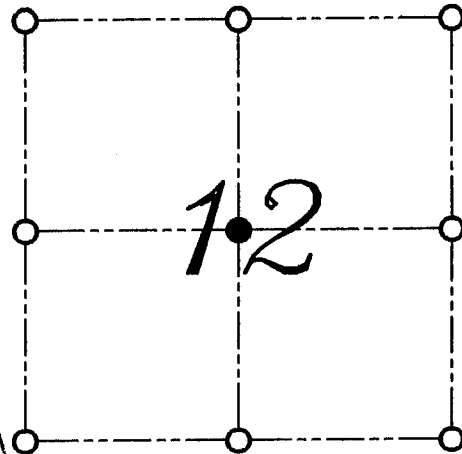
CORNER NUMBER 39.5

**CERTIFICATE:**

I, LARRY L. AUSTIN, DO HEREBY CERTIFY THAT ON EIGHTH DAY OF MAY, 1999, I FOUND NO EVIDENCE OF THE CENTER OF SECTION 12, TOWN 2 NORTH, RANGE 2 WEST, OF THE FOURTH PRINCIPAL MERIDIAN, AND I RE-ESTABLISHED SAID CORNER ACCORDING TO THE WISCONSIN STATUTES AS SHOWN AND DESCRIBED HEREON.

DATED THIS TWENTY-SECOND DAY OF MAY, 1999

*Larry L. Austin*  
LARRY L. AUSTIN S-1903



● = CORNER LOCATION

CENTER OF SECTION 12  
T 2 N R 2 W  
TOWN OF PARIS



**HISTORY OF ORIGINAL CORNER ESTABLISHMENT:**

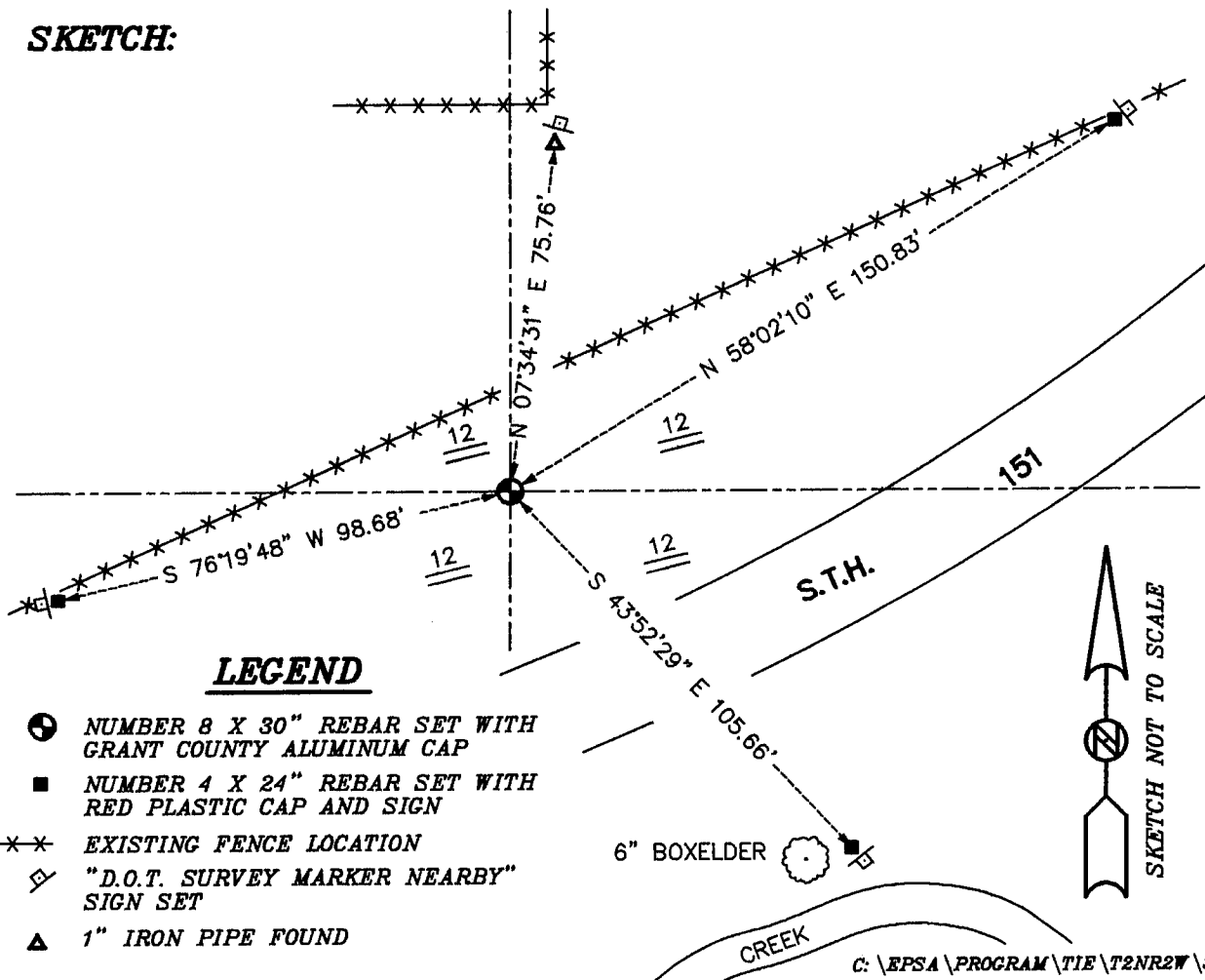
CORNER WAS NEVER ORIGINALLY SET.

**DESCRIPTION OF CORNER EVIDENCE FOUND:**

I SET THE CORNER ONLINE BETWEEN THE 1/4 LINES.  
VERIFIED THIS LOCATION USING E.D.M. AND G.P.S. METHODS.

**DESCRIPTION OF CORNER AND WITNESS MONUMENTS, REFERENCES AND ACCESSORIES USED TO PERPETUATE THE ORIGINAL OR RE-ESTABLISHED LOCATION OF THIS CORNER:**  
WITNESS TO THE CORNER LOCATION: BOBBY SEDGWICK ; SHELBY BLINDERT

**SKETCH:**



**LEGEND**

- NUMBER 8 X 30" REBAR SET WITH GRANT COUNTY ALUMINUM CAP
- NUMBER 4 X 24" REBAR SET WITH RED PLASTIC CAP AND SIGN
- \*\*\* EXISTING FENCE LOCATION
- ◇ "D.O.T. SURVEY MARKER NEARBY" SIGN SET
- ▲ 1" IRON PIPE FOUND



C: \EPSA\PROGRAM\TIE\T2NR2W\395