

# GRANT COUNTY

## Survey Monument Record

CORNER NO. \_\_\_\_\_  
 SECTION 13  
 TOWN 2N  
 RANGE 2W

TYPE OF MONUMENT GRANT Co. ALUM. MONUMENT

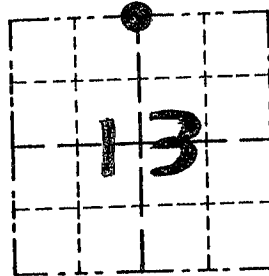
STATE PLANE COORDINATES: N \_\_\_\_\_  
 E \_\_\_\_\_

ELEVATION — M.S.L. DATUM: \_\_\_\_\_

THETA ANGLE: \_\_\_\_\_

FIELD BOOK: 94-02

PAGE 19



LOCATION  
 (Indicated by "●")

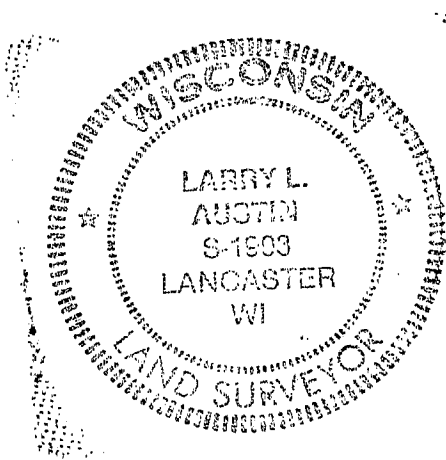
### BASIS FOR MONUMENT LOCATION

(Use reverse side if necessary)

Show info such as: History of corner, with reference to Vol. and pg., dates, surveyor; exact description of monument replaced; if location computed, by taped or EDM traverse; landowner, remarks, etc.

NO RECORD OF CORNER PD.  
SINCE ORIG. SURVEYS;  
CORNER SET AT OCCUPATION  
& VERIFIED BY EDM  
TRAVERSE

SEAL:



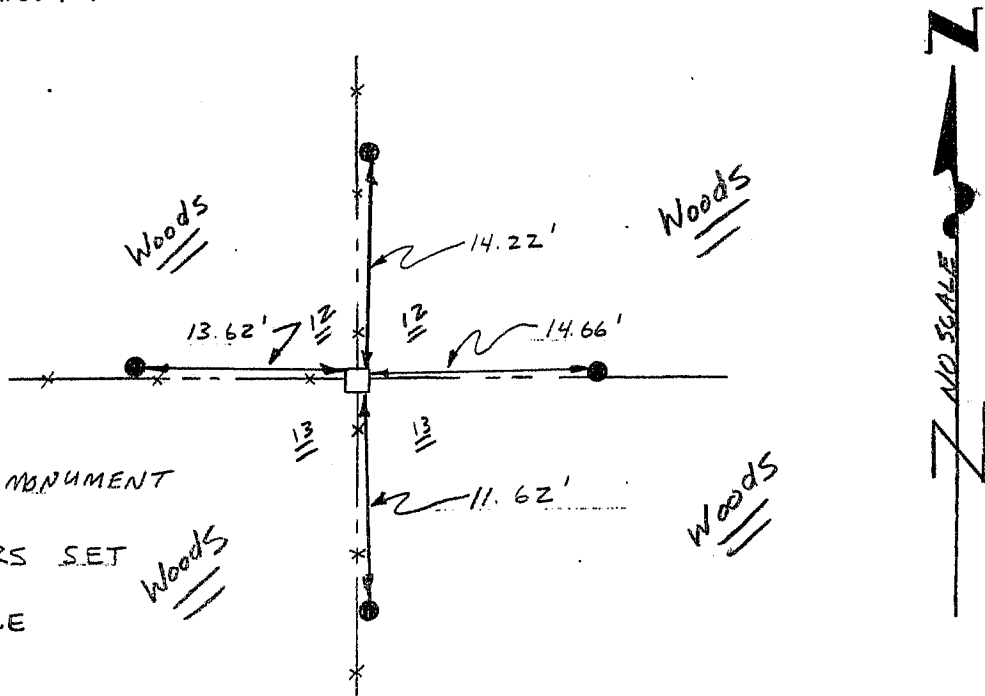
CERTIFIED CORRECT

Larry L. Austin  
 Registered Land Surveyor

DATE: 3/18/94

### TIE SKETCH

Show at least three (3) ties and monument



#### LEGEND

□ GRANT CO. ALUM. MONUMENT

● 1/2" x 18" REBARS SET AS TIES

××× EXISTING FENCE