

GRANT COUNTY CERTIFIED LAND CORNER

CERTIFICATE:

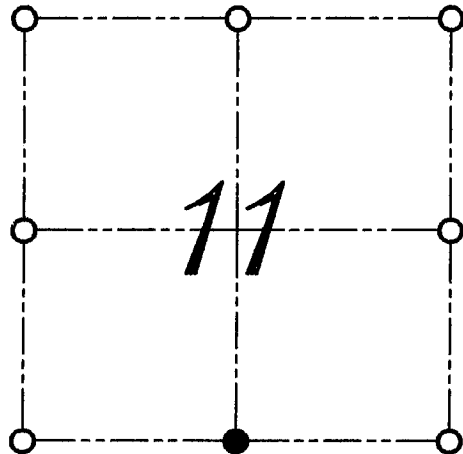
I, LARRY L. AUSTIN, DO HEREBY CERTIFY THAT ON EIGHTH DAY OF MAY, 1999, I FOUND MONUMENTED EVIDENCE OF THE EAST 1/4 CORNER SECTION 11, TOWN 2 NORTH, RANGE 2 WEST, OF THE FOURTH PRINCIPAL MERIDIAN, AND I RE-ESTABLISHED SAID CORNER ACCORDING TO THE WISCONSIN STATUTES AS SHOWN AND DESCRIBED HEREON.

DATED THIS TWENTY-SECOND DAY OF MAY, 1999

Larry L. Austin
LARRY L. AUSTIN S-1903



CORNER NUMBER 44



● = CORNER LOCATION

SOUTH 1/4 CORNER OF SECTION 11, T 2 N R 2 W TOWN OF PARIS

HISTORY OF ORIGINAL CORNER ESTABLISHMENT:

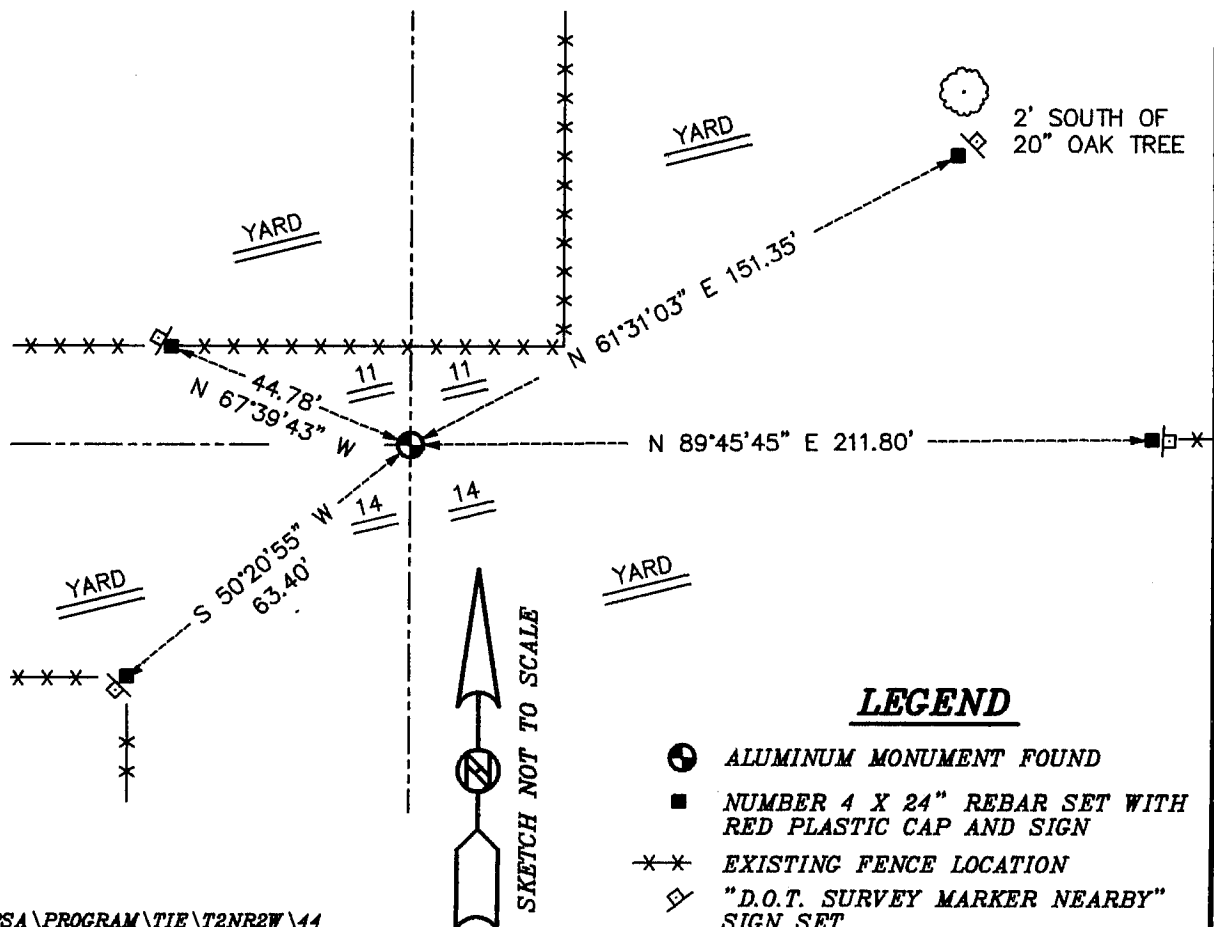
CORNER WAS SET IN 1833 BY LUCIUS LYON.
I SET THE CORNER IN 1995.

DESCRIPTION OF CORNER EVIDENCE FOUND:

I FOUND THE EXISTING ALUMINUM MONUMENT AND ACCEPTED THIS LOCATION AFTER AN E.D.M. TRAVERSE OF THE AREA.

DESCRIPTION OF CORNER AND WITNESS MONUMENTS, REFERENCES AND ACCESSORIES USED TO PERPETUATE THE ORIGINAL OR RE-ESTABLISHED LOCATION OF THIS CORNER:
WITNESS TO THE CORNER LOCATION: BOBBY SEDGWICK ; SHELBY BLINDERT

SKETCH:



LEGEND

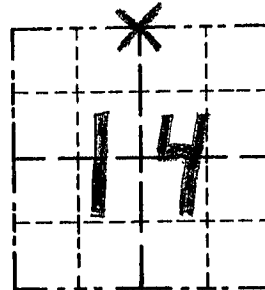
- ALUMINUM MONUMENT FOUND
- NUMBER 4 X 24" REBAR SET WITH RED PLASTIC CAP AND SIGN
- *-* EXISTING FENCE LOCATION
- ⊠ "D.O.T. SURVEY MARKER NEARBY" SIGN SET

GRANT COUNTY

Survey Monument Record

TYPE OF MONUMENT COUNTY MONUMENT
 STATE PLANE COORDINATES: N _____
 E _____
 ELEVATION — M.S.L. DATUM: _____
 THETA ANGLE: _____
 FIELD BOOK: _____
 PAGE _____

CORNER NO. 44
 SECTION 14
 TOWN 2 N
 RANGE 2 W
N 1/4 COR



LOCATION
 (Indicated by "X")

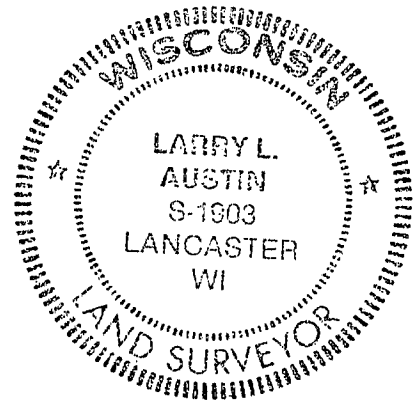
BASIS FOR MONUMENT LOCATION

(Use reverse side if necessary)

Show info such as: History of corner, with reference to Vol. and pg., dates, surveyor; exact description of monument replaced; if location computed, by taped or EDM. traverse; landowner, remarks, etc.

SEAL:

CORNER ORIGINALLY SET BY LYON IN 1832. I ESTABLISHED THE N-S LOCATION BY PROJECTING FOUND FENCE REMNANTS 250'± TO EAST; E-W LOCATION DETERMINED FROM DIMENSIONS IN DEED REC. IN VOL. 448 AT PAGE 488.



CERTIFIED CORRECT

Larry L. Austin
 Registered Land Surveyor

DATE: 4/20/95

TIE SKETCH

Show at least three (3) ties and monument

ALL TIES = 3/4" x 24" IRON BARS

