

GRANT COUNTY CERTIFIED LAND CORNER

CERTIFICATE:

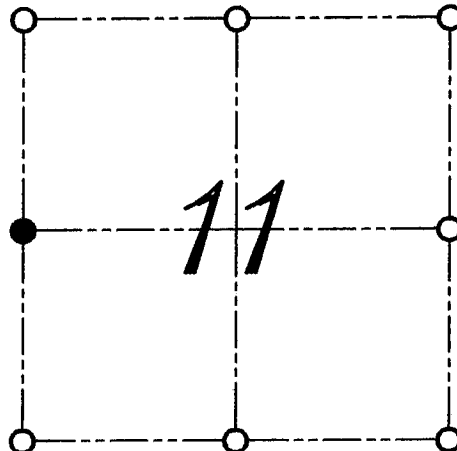
I, LARRY L. AUSTIN, DO HEREBY CERTIFY THAT ON EIGHTH DAY OF MAY, 1999, I FOUND OCCUPATIONAL EVIDENCE OF THE WEST 1/4 CORNER SECTION 11, TOWN 2 NORTH, RANGE 2 WEST, OF THE FOURTH PRINCIPAL MERIDIAN, AND I RE-ESTABLISHED SAID CORNER ACCORDING TO THE WISCONSIN STATUTES AS SHOWN AND DESCRIBED HEREON.

DATED THIS TWENTY-SECOND DAY OF MAY, 1999

Larry L. Austin
LARRY L. AUSTIN S-1903



CORNER NUMBER 38



● = CORNER LOCATION
WEST 1/4 CORNER OF SECTION 11, T 2 N R 2 W TOWN OF PARIS

HISTORY OF ORIGINAL CORNER ESTABLISHMENT:

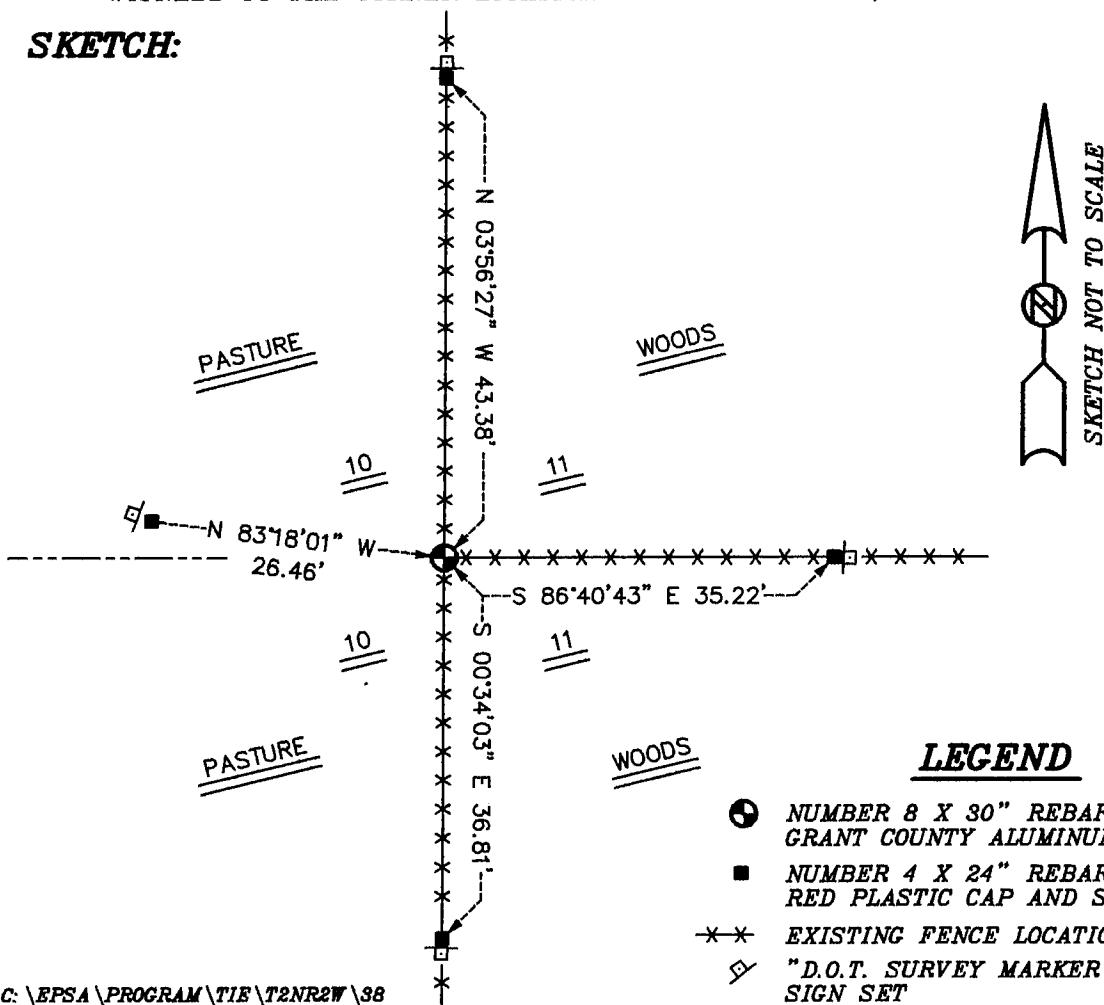
CORNER WAS SET IN 1833 BY LUCIUS LYON.

DESCRIPTION OF CORNER EVIDENCE FOUND:

I FOUND AN EXISTING FENCE CORNER. I VERIFIED AND ACCEPTED THIS LOCATION AFTER AN E.D.M. AND G.P.S. TRAVERSE OF THE AREA.

DESCRIPTION OF CORNER AND WITNESS MONUMENTS, REFERENCES AND ACCESSORIES USED TO PERPETUATE THE ORIGINAL OR RE-ESTABLISHED LOCATION OF THIS CORNER:
WITNESS TO THE CORNER LOCATION: BOBBY SEDGWICK ; SHELBY BLINDERT

SKETCH:



LEGEND

- NUMBER 8 X 30" REBAR SET WITH GRANT COUNTY ALUMINUM CAP
- NUMBER 4 X 24" REBAR SET WITH RED PLASTIC CAP AND SIGN
- EXISTING FENCE LOCATION
- ◇ "D.O.T. SURVEY MARKER NEARBY" SIGN SET