

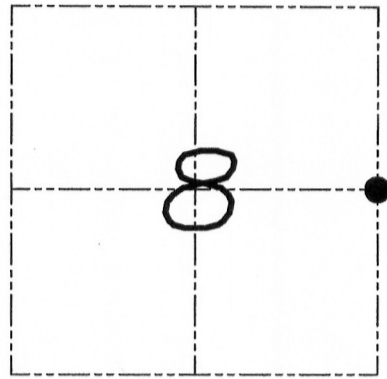
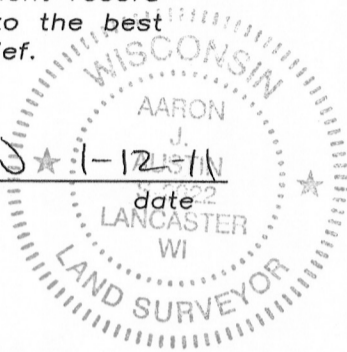
U.S. PUBLIC LAND SURVEY MONUMENT RECORD

Section 8, Town 2 North Range 2 West, Town of Paris, Grant County, Wisconsin

CERTIFICATE

I, Aaron J. Austin, do hereby certify that the corner location on this record was determined by me and/or under my direct supervision and that this U.S. public land survey monument record is correct and complete to the best of my knowledge and belief.

Aaron J. Austin ★ 1-12-11
 Aaron J. Austin, S-2922
 date



● = CORNER LOCATION

HISTORY OF CORNER

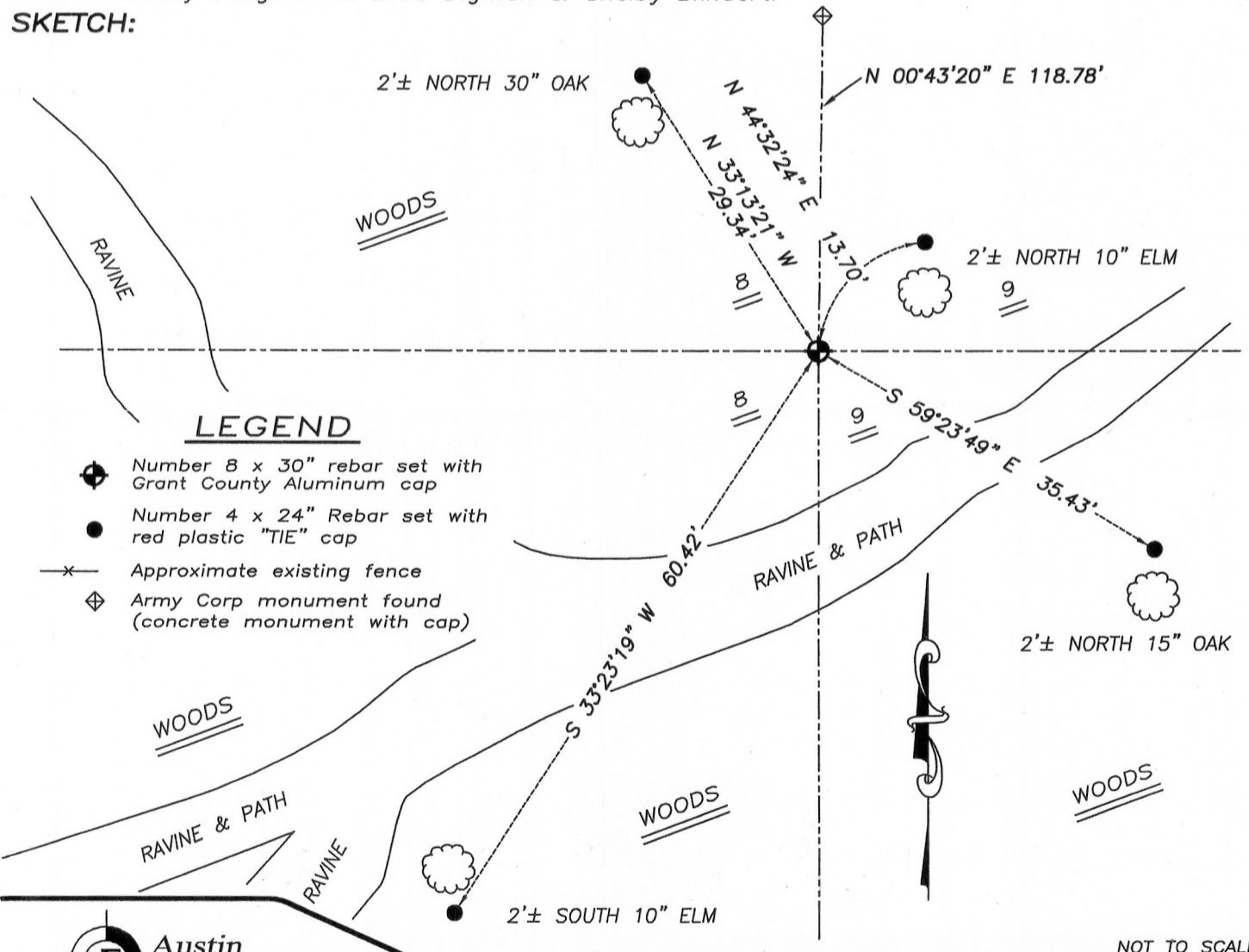
Corner was originally set in 1832 by Lyon. In 1938 the Army Corp. of Engineers measured to the corner with no mention of monument. No other record of the corner was found.

CORNER EVIDENCE FOUND

Corner was set proportionately between the Northeast and Southeast Corners of Section Eight, and on-line with the Northeast Corner and a concrete monument found from the Army Corp.

DESCRIPTION OF CORNER AND WITNESS MONUMENTS, references and accessories used to perpetuate the original or reestablished location of this corner. Witnesses to monument location Bobby Sedgwick & Brad Digman & Shelby Blindert.

SKETCH:



LEGEND

- ◆ Number 8 x 30" rebar set with Grant County Aluminum cap
- Number 4 x 24" Rebar set with red plastic "TIE" cap
- x- Approximate existing fence
- ◆ Army Corp monument found (concrete monument with cap)

NOT TO SCALE

Austin Engineering LLC
 austinengineeringllc.com
 4211 HWY 81 E, LANCASTER, WI 53813
 PHONE: 608-723-6363 FAX: 608-723-6702

JOB NUMBER 08S274-WELP
 FIELDBOOK: TDSR, 1000, 1002
 G:\T2NR3W\12
 H:\TIE\T2NR2W\36
 DRAWN BY: SW AUSTIN
 APPROVED: AJ AUSTIN