

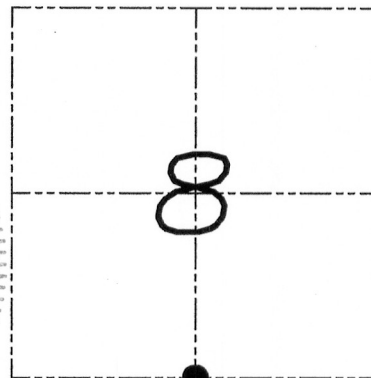
# U.S. PUBLIC LAND SURVEY MONUMENT RECORD

Section 8, Town 2 North Range 2 West, Town of Paris, Grant County, Wisconsin

## CERTIFICATE

I, Aaron J. Austin, do hereby certify that the corner location on this record was determined by me and/or under my direct supervision and that this U.S. public land survey monument record is correct and complete to the best of my knowledge and belief.

*Aaron J. Austin* 1-12-11  
 Aaron J. Austin, S-2922 date



● = CORNER LOCATION

## HISTORY OF CORNER

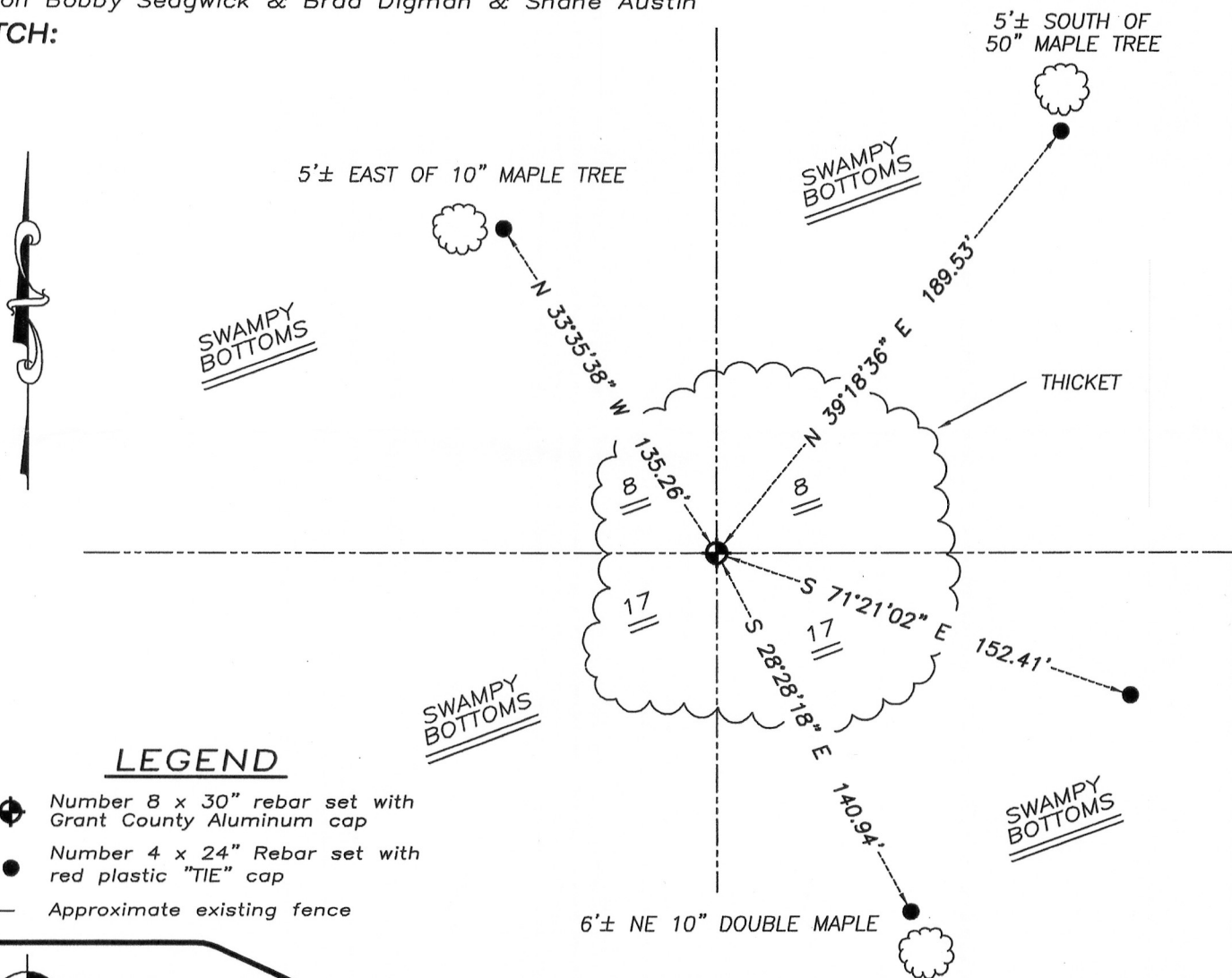
Corner was originally set in 1832 by Lyon. In 1938 the Army Corp. of Engineers tied to the corner with no mention of monument. No other record of the corner was found.

## CORNER EVIDENCE FOUND

I reset the corner based on proportionate methods to the adjoining existing corners. Verified this location using EDM & GPS methods.

DESCRIPTION OF CORNER AND WITNESS MONUMENTS, references and accessories used to perpetuate the original or reestablished location of this corner. Witnesses to monument location Bobby Sedgwick & Brad Digman & Shane Austin

## SKETCH:



## LEGEND

- Number 8 x 30" rebar set with Grant County Aluminum cap
- Number 4 x 24" Rebar set with red plastic "TIE" cap
- \*— Approximate existing fence

NOT TO SCALE

**Austin Engineering LLC**  
 austinengineeringllc.com  
 4211 HWY 81 E, LANCASTER, WI 53813  
 PHONE: 608-723-6363 FAX: 608-723-6702

JOB NUMBER 08S274-WELP  
 FIELDBOOK: TDSR, 1000, 1002  
 G:\T2NR3W\12  
 H:\TIE\T2NR2W\50  
 DRAWN BY: SW AUSTIN  
 APPROVED: AJ AUSTIN