

U. S. PUBLIC LAND SURVEY MONUMENT RECORD

INSTRUCTIONS: This record shall show the location of the corner and shall include all of the following nine elements (a through i).

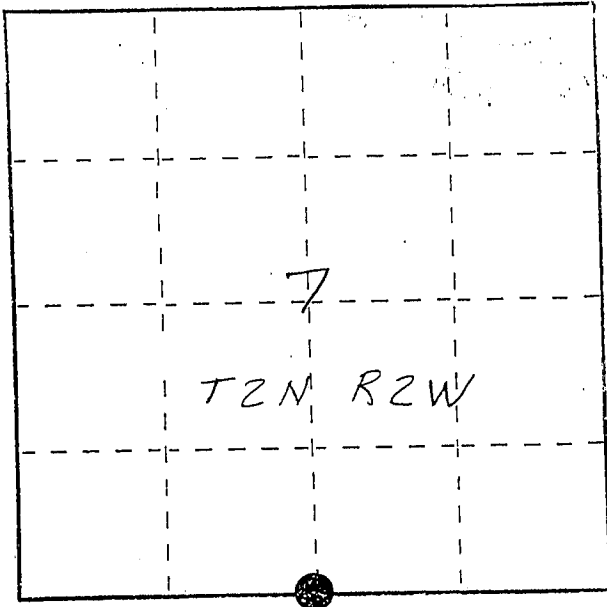
(a) Identify the corner by reference to the U.S. public land survey system.

● = Corner monument restored.

5/4 corner section 7
T2N R2W of the
4th P.M.
Town of Paris
Grant County, Wisconsin



APR 27 1988



(b) Describe any record evidence, monument evidence, occupational evidence, testimonial evidence or any other material evidence you considered, and whether the monument was found or placed.

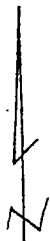
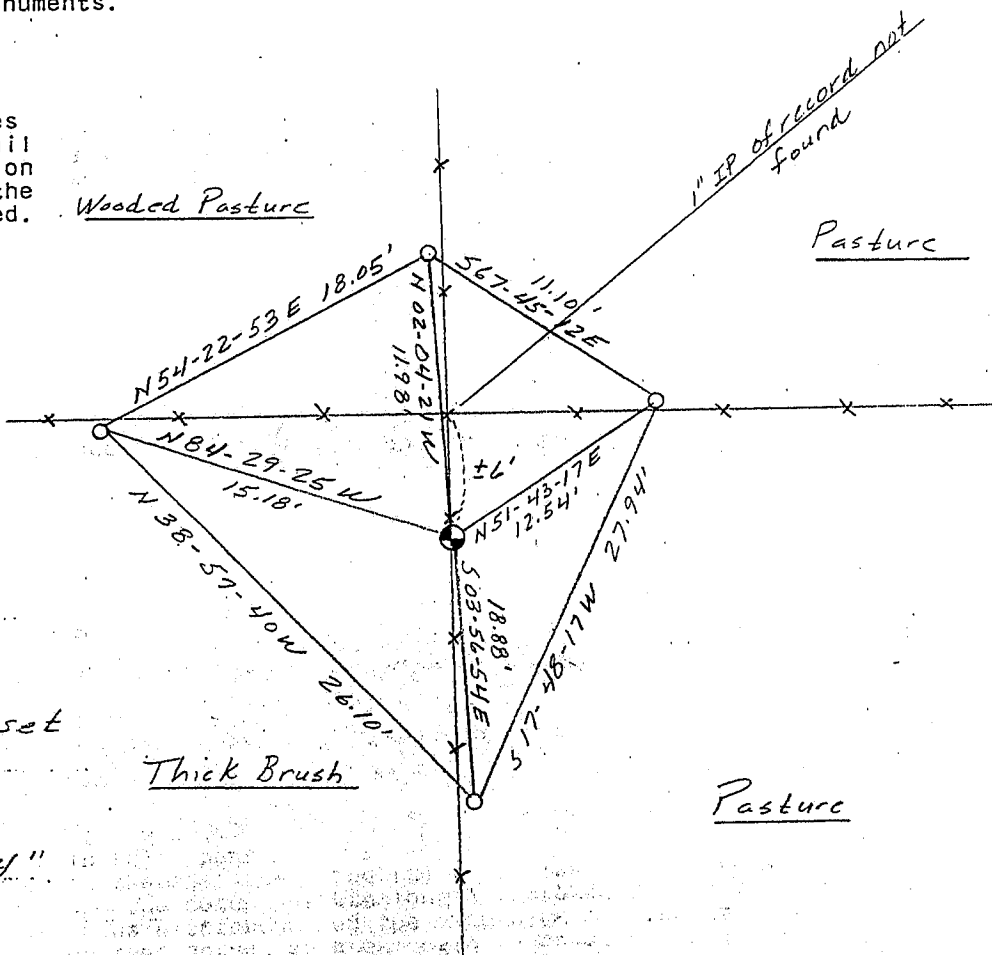
Monument set using information from a 1937 C.O.E survey and 1978 and 1987 surveys by Laurence E. Schmit. Also, information was gathered from conversations with Robert Kerkenbush ^{landowner} and Laurence Schmit which helped me determine the corner location. Monument was set on line between reestablished SW cor. of 7 and stone of record to the east (which was backed in) and along north-south fence line as described in Schmit's 1978 survey. The south line of section 7 agrees very well with the C.O.E's 1937 survey.

(c) In the plan view drawing below, provide reference ties to at least 4 witness monuments, or, if the location is within a municipality, to at least 2 witness monuments. (Witness monuments shall be made of concrete, natural stone, iron or other equally durable material, ~~except~~ ~~wood.~~) Describe witness monuments.

(d) Show a plan view drawing depicting the relevant monuments and reference ties which is sufficient in detail to enable accurate relocation of the corner monument if the corner monument is disturbed. Indicate north.

Wooded Pasture

Pasture



No Scale
Bearings - Wis. Grid

- Berntsen A-1 mon. set at grade.
- Ref. mon. 3/4" x 24" rebar w/cap.

Thick Brush

Pasture

- (e) Describe any material discrepancy between the location of the corner as restored or reestablished and the location of that corner as previously restored or reestablished by distance and direction. Show the discrepancy on the plan view drawing under (d), above. Show the distances between the corner as previously restored or reestablished and (1) the corner as restored or reestablished, and (2) to at least 2 of the witness monuments shown on the drawing in (d), above.

Corner location disagrees with that of Laurence Schmits as shown in his 1978 and 1987 surveys. After having a conversation we agreed that the corner should be reestablished as shown on this record sheet. Previous corner was a 1" iron pipe placed at the fence corner to the north, which could not be found.

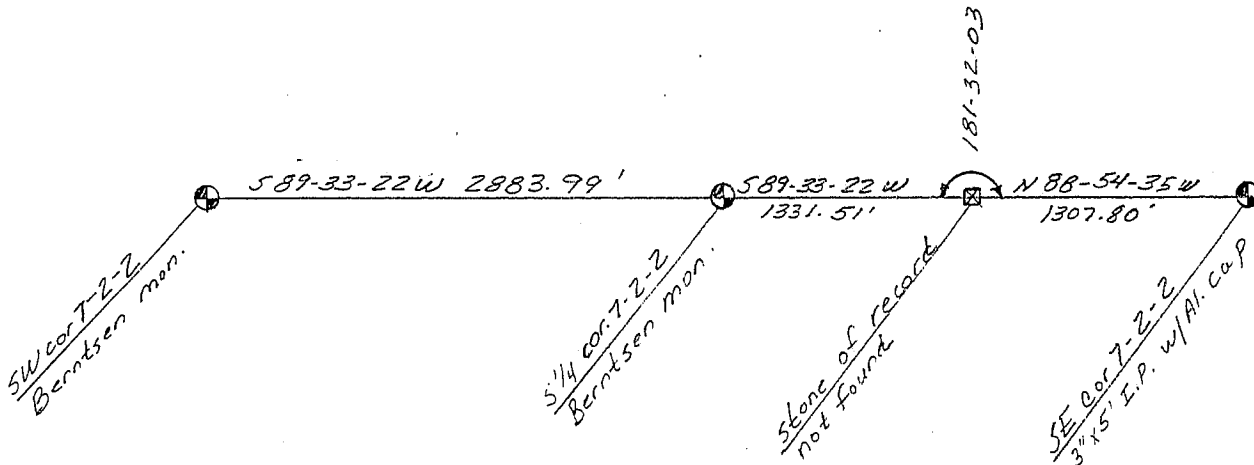
- (f) Was the corner restored through acceptance of (1) an obliterated evidence location, or, (2) a found perpetuated location?

- (g&h) Was the corner reestablished through lost corner proportionate methods? If so, show the method, including the directions and distances to other public land survey corners used as evidence or used for proportioning in determining the corner location?

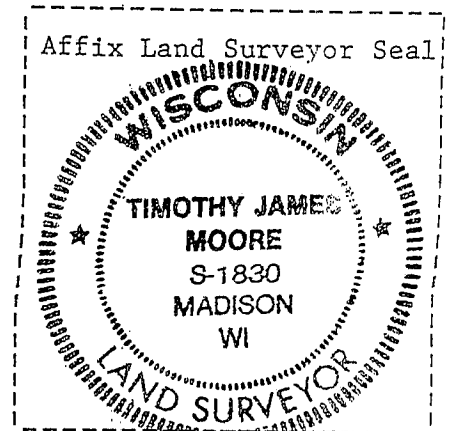


No Scale
Bearings - Wis. Grid

Sec. 7



Sec. 18



- (i) I, Timothy J. Moore
(type or print name) certify that the corner location shown on this record was determined by me or under my direction and control and that this U.S. Public Land Survey Monument Record is correct and complete to the best of my knowledge and belief.

T J M

7 11 00