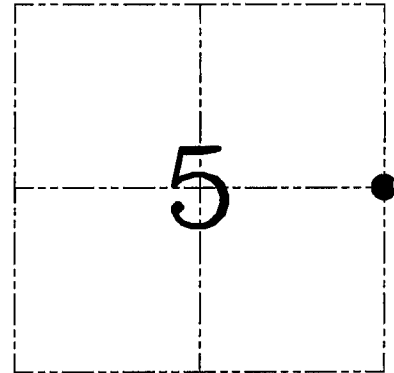
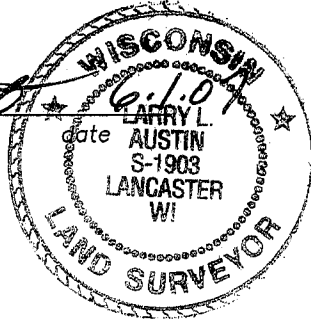


U.S. PUBLIC LAND SURVEY MONUMENT RECORD – GRANT COUNTY, WI
Section 5, Town 2 North Range 2 West, Town of Paris

CERTIFICATE

I, Larry L. Austin, do hereby certify that the corner location on this record was determined by me and/or under my direct supervision and that this U.S. public land survey monument record is correct and complete to the best of my knowledge and belief.

Larry L. Austin
 Larry L. Austin, S-1903



● = CORNER LOCATION

HISTORY OF CORNER ESTABLISHMENT

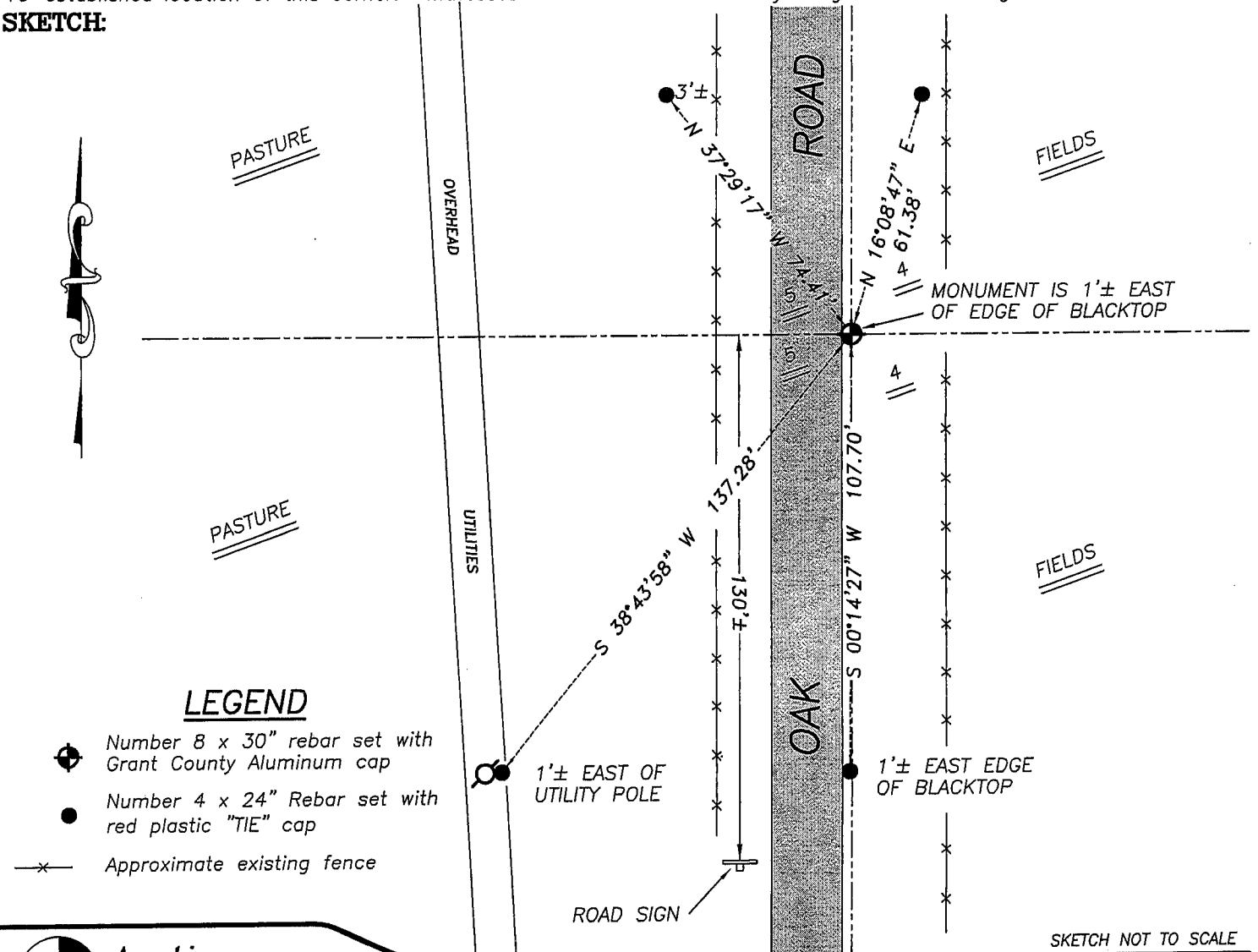
Corner was originally set in 1833 by Lyon. In 1848 Stuntz tied to the original corner. In 1876 Barber set bearing trees to the corner. No other record of the corner was found.

DESCRIPTION OF CORNER EVIDENCE FOUND

No evidence of the location of the original corner or subsequent surveys was found. I reset the corner proportionately on-line between the Northeast corner and Southeast corners of Section 5. Verified this location using EDM & GPS methods.

DESCRIPTION OF CORNER AND WITNESS MONUMENTS, references and accessories used to perpetuate the original or re-established location of this corner. Witnesses to corner location Bobby Sedgwick & Brad Digman & Shane Austin

SKETCH:



Austin Engineering LLC

4211 HWY 81 E, LANCASTER, WI 53813
 PHONE 608-723-6363 FAX 608-723-6702

JOB NUMBER 07S063
 FIELDBOOK: TDSR, 2703
 G:\T3NR2W\33
 H:\TIE\T2NR2W\16

DRAWN BY: SW AUSTIN
 APPROVED: LL AUSTIN