

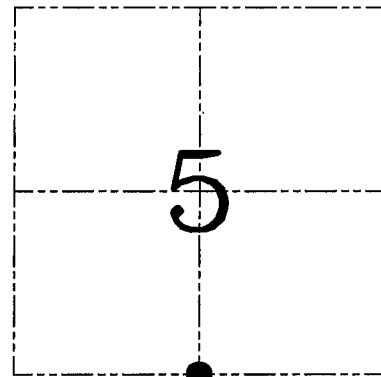
U.S. PUBLIC LAND SURVEY MONUMENT RECORD – GRANT COUNTY, WI

Section 5, Town 2 North Range 2 West, Town of Paris

CERTIFICATE

I, Larry L. Austin, do hereby certify that the corner location on this record was determined by me and/or under my direct supervision and that this U.S. public land survey monument record is correct and complete to the best of my knowledge and belief.

Larry L. Austin
 Larry L. Austin, S-1903



● = CORNER LOCATION

HISTORY OF CORNER ESTABLISHMENT

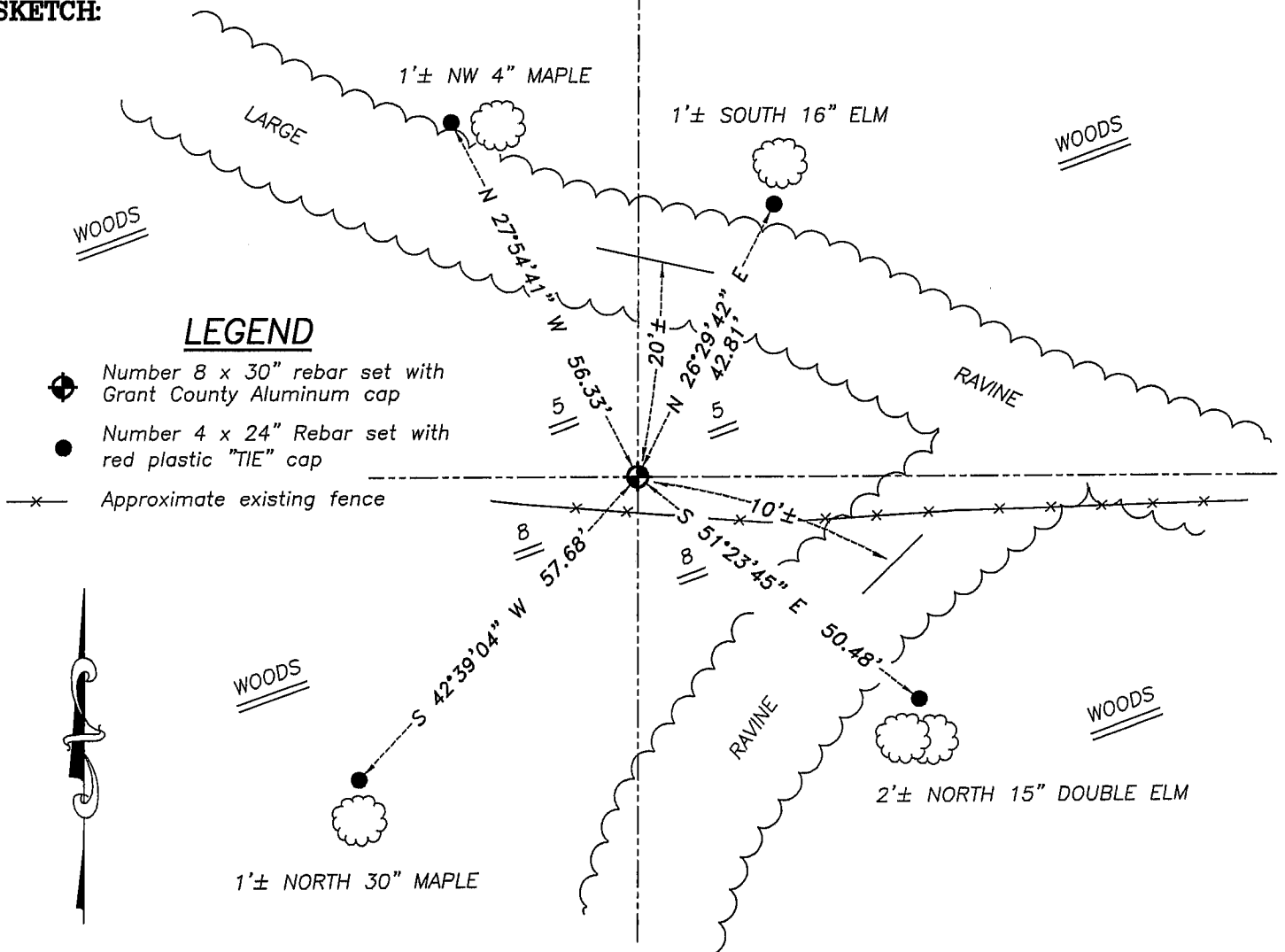
Corner was originally set in 1833 by Lyon. In 1848 Stuntz tied to the original corner. In 1876 Barber set bearing trees to the corner. No other record of the corner was found.

DESCRIPTION OF CORNER EVIDENCE FOUND

Northing of the corner was on-line between the Southwest and Southeast corners. Easting was established by Protracting from the North 1/4 through the center of Section 5. This location fit occupational evidence and adjoining corners. Verified this location using EDM & GPS Methods.

DESCRIPTION OF CORNER AND WITNESS MONUMENTS, references and accessories used to perpetuate the original or re-established location of this corner. Witnesses to corner location Bobby Sedgwick & Brad Digman & Shane Austin

SKETCH:



SKETCH NOT TO SCALE

Austin Engineering LLC
 4211 HWY 81 E, LANCASTER, WI 53813
 PHONE 608-723-6363 FAX 608-723-6702

JOB NUMBER 07S063
 FIELDBOOK: TDSR, 2703
 G:\T3NR2W\33
 H:\TIE\T2NR2W\30

DRAWN BY: SW AUSTIN
 APPROVED: LL AUSTIN