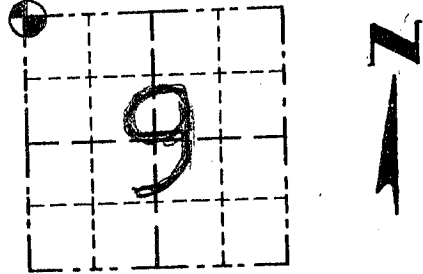


# GRANT COUNTY

## Survey Monument Record

TYPE OF MONUMENT ALUM. MON. PLACED  
 STATE PLANE COORDINATES: N \_\_\_\_\_  
 E \_\_\_\_\_  
 ELEVATION — M.S.L. DATUM: \_\_\_\_\_  
 THETA ANGLE: \_\_\_\_\_  
 FIELD BOOK: 94-00  
 PAGE: 27

CORNER NO. 29  
 SECTION 9  
 TOWN 2N  
 RANGE 2W



LOCATION  
 (Indicated by )

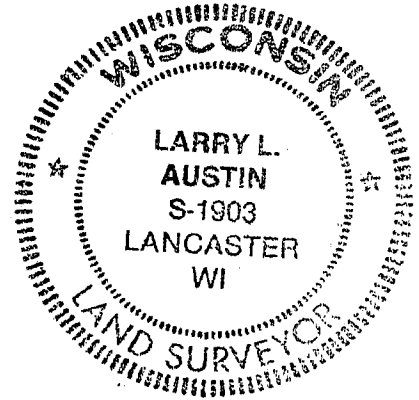
### BASIS FOR MONUMENT LOCATION

(Use reverse side if necessary)

Show info such as: History of corner, with reference to Vol. and pg., dates, surveyor; exact description of monument replaced; if location computed, by taped or EDM traverse; landowner, remarks, etc.

SEAL:

LAST RECORD OF CORNER FOUND WAS FROM ARMY CORPS SURVEYS 1938. I RE-ESTABLISHED ITS LOCATION FROM FOUND MONUMENTS OF ARMY CORPS SURVEY, THIS LOCATION MATCHES FOUND REMNANTS OF AN ANCIENT FENCE.






CERTIFIED CORRECT

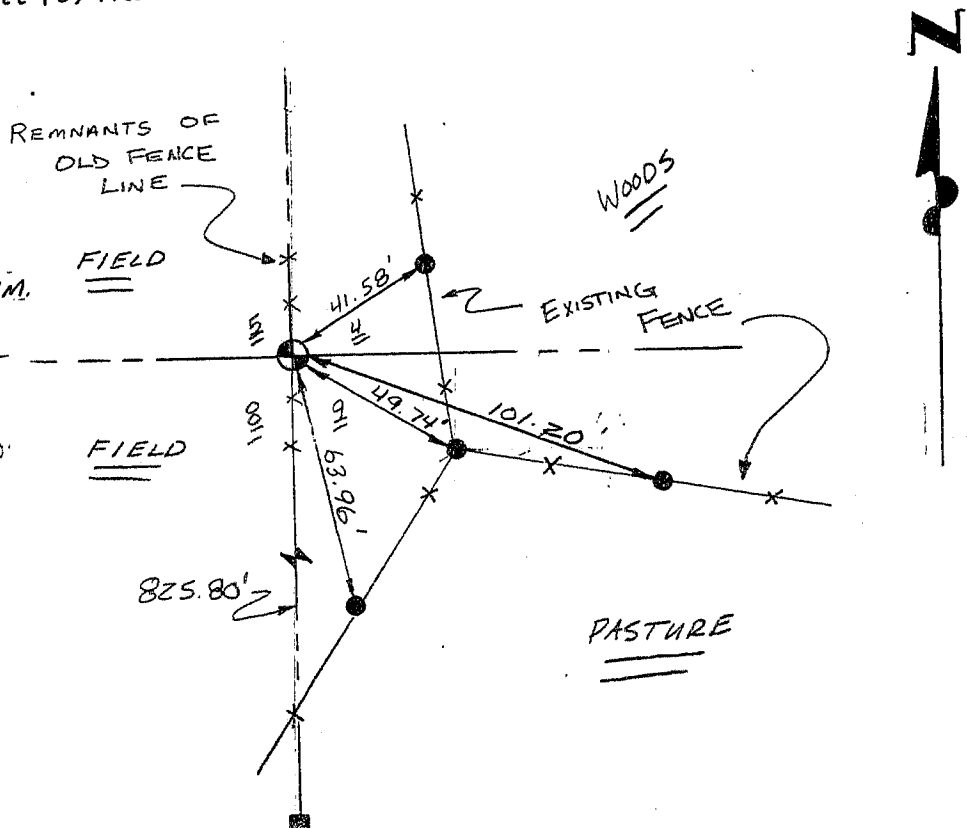
Larry L. Austin  
 Registered Land Surveyor

DATE: 4/29/94

### TIE SKETCH

Show at least three (3) ties and monument

- LEGEND
-  GRANT COUNTY ALUM. MON. PLACED
  -  1" IRON PIPE SET
  -  U.S. ARMY CORPS MONUMENT FOUND ON N-S SECTION LINE



NO SCALE