

U.S. PUBLIC LAND SURVEY MONUMENT RECORD - GRANT COUNTY, WI

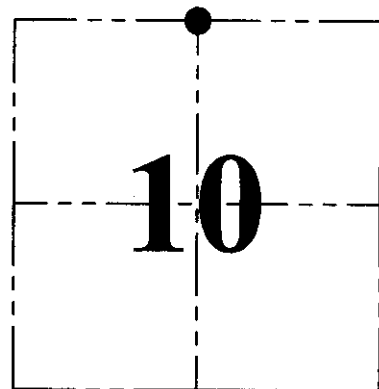
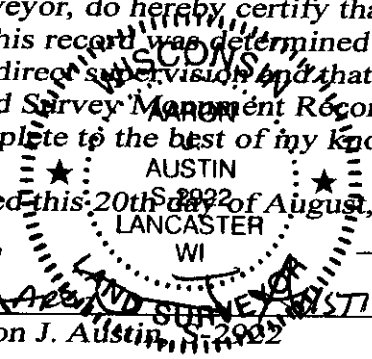
Section 10, Town 2 North Range 2 West, Town of Paris

CERTIFICATE:

I, Aaron J. Austin, Wisconsin Professional Land Surveyor, do hereby certify that the corner location on this record was determined by me and/or under my direct supervision and that this U.S. Public Land Survey Monument Record is correct and complete to the best of my knowledge and belief.

Dated this 20th day of August, 2015.

Aaron J. Austin
 Aaron J. Austin, Wisconsin Professional Land Surveyor
 No. 2992



● = CORNER LOCATION

HISTORY OF CORNER ESTABLISHMENT:

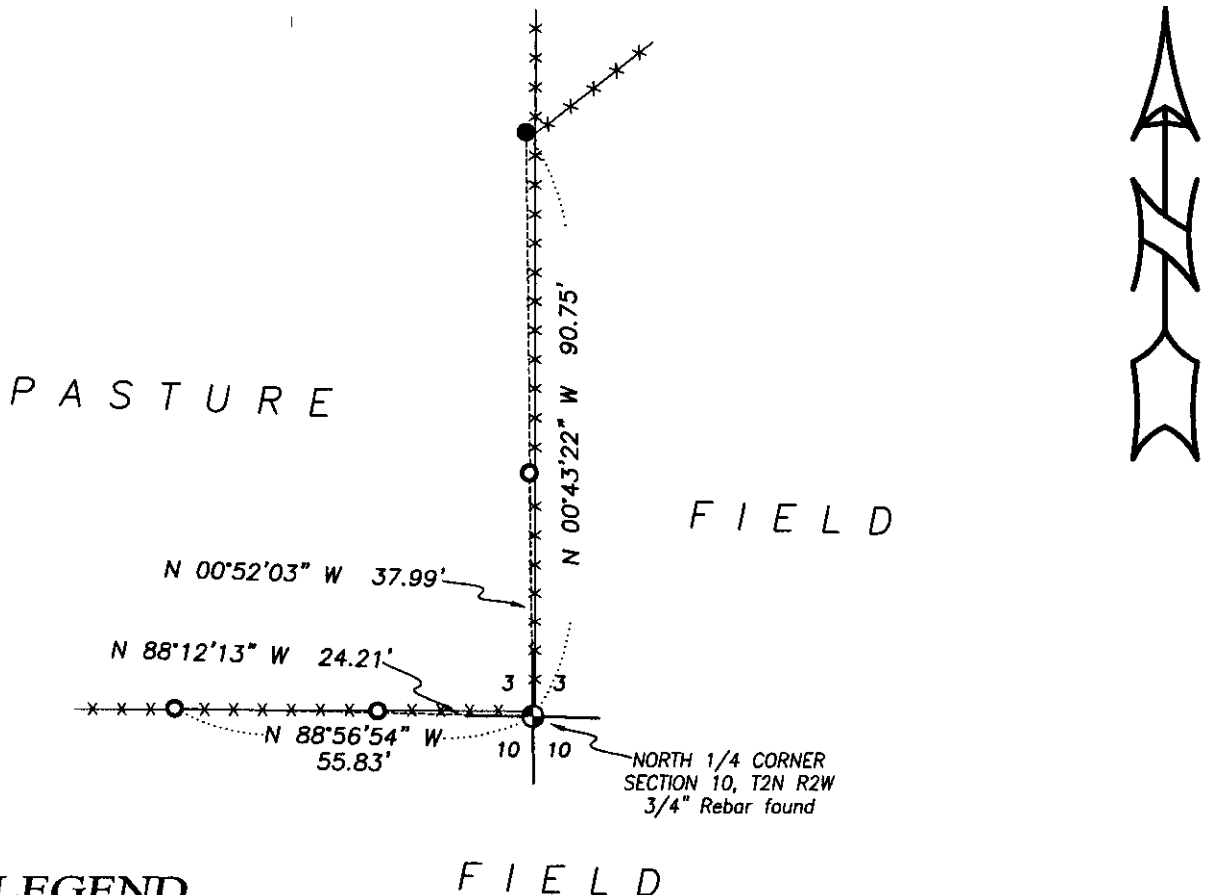
- 1833-Lucius Lyon set original corner.
- 1856-Overton found original corner on a Survey in Book B, Page 464.
- 1996-Larry Austin reset the corner on a Survey in Book X, Page 30.
- 1997-Thomas Buck tied to the corner on C.S.M. No. 444.
- 2000-Larry Austin tied to the corner on C.S.M. No. 652.
- No other record found for this corner.

DESCRIPTION OF CORNER EVIDENCE FOUND:

I found and accepted a 3/4" Rebar at the location established by Larry Austin. I found 3 witness corners and set 1 witness corner as shown hereon and verified this location with E.D.M. and G.P.S. methods.

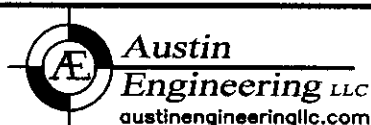
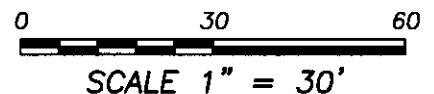
DESCRIPTION OF CORNER AND WITNESS MONUMENTS, references and accessories used to perpetuate the original or re-established location of this corner. Witnesses to corner location Shane Austin and Brandon Austin.

SKETCH:



LEGEND

- Section Corner - as designated
- 1/2" x 12" Rebar set with red plastic "TIE" cap
- 1/2" rebar found
- x-x- Approximate existing fence



4211 HWY 81 E, LANCASTER, WI 53813
 PHONE: 608-723-6363 FAX: 608-723-6702

JOB NO: 15s123
 H:\CRD\15s123
 H:\TIE\T2NR2W\26

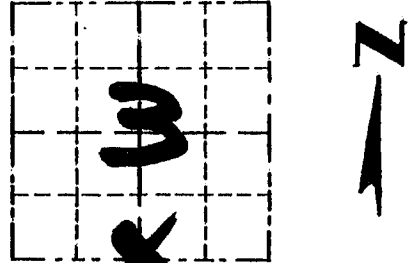
FIELDBOOK: TDSR
 DRAWN BY: AJ AUSTIN
 CREW: SW AUSTIN, BL AUSTIN

Survey Monument Record

TYPE OF MONUMENT 3/4" x 24" IRON BAR SET

CORNER NO. 26
 SECTION 3
 TOWN T2N
 RANGE R2W

FIELD BOOK: 96-12
 PAGE (11)



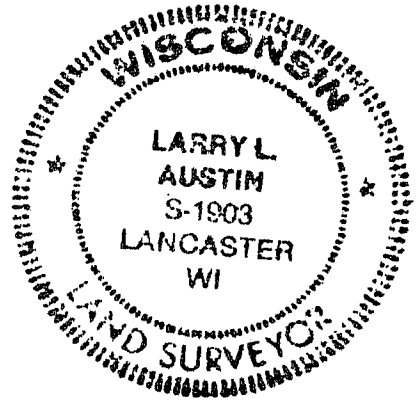
LOCATION
 (Indicated by "X")

BASIS FOR MONUMENT LOCATION

(Use reverse side if necessary)

Show info such as: History of corner, with reference to Vol. and pg., dates, surveyor; exact description of monument replaced; if location computed, by taped or EDM traverse; landowner, remarks, etc.

SEAL:



CORNER SET IN 1833 BY
 LUCIUS LYON. ORIGINAL BEARING
 TREES WERE UNRECOVERABLE,
 NO RECORD OF CORNER FOUND
 SINCE ORIGINAL SURVEYS, CORNER
 SET AT A OCCUPIED FENCE CORNER.
 VERIFIED ITS LOCATION BY EDM
 TRAVERSE OF AREA.

CERTIFIED CORRECT

Larry L. Austin
 Registered Land Surveyor

DATE: 8/26/96

TIE SKETCH

Show at least three (3) ties and monument

