

# GRANT COUNTY CERTIFIED LAND CORNER

**CERTIFICATE:**

I, LARRY L. AUSTIN, DO HEREBY CERTIFY THAT ON EIGHTH DAY OF MAY, 1999, I FOUND OCCUPATIONAL EVIDENCE OF THE NORTHWEST CORNER SECTION 11, TOWN 2 NORTH, RANGE 2 WEST, OF THE FOURTH PRINCIPAL MERIDIAN, AND I RE-ESTABLISHED SAID CORNER ACCORDING TO THE WISCONSIN STATUTES AS SHOWN AND DESCRIBED HEREON.

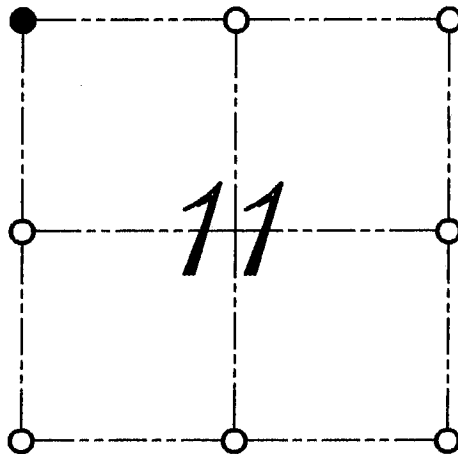
DATED THIS TWENTY-SECOND DAY OF MAY, 1999

*Larry L. Austin*  
LARRY L. AUSTIN S-1903



SEAL

CORNER NUMBER 25



● = CORNER LOCATION  
NORTHWEST CORNER OF  
SECTION 11, T 2 N R 2 W  
TOWN OF PARIS

**HISTORY OF ORIGINAL CORNER ESTABLISHMENT:**

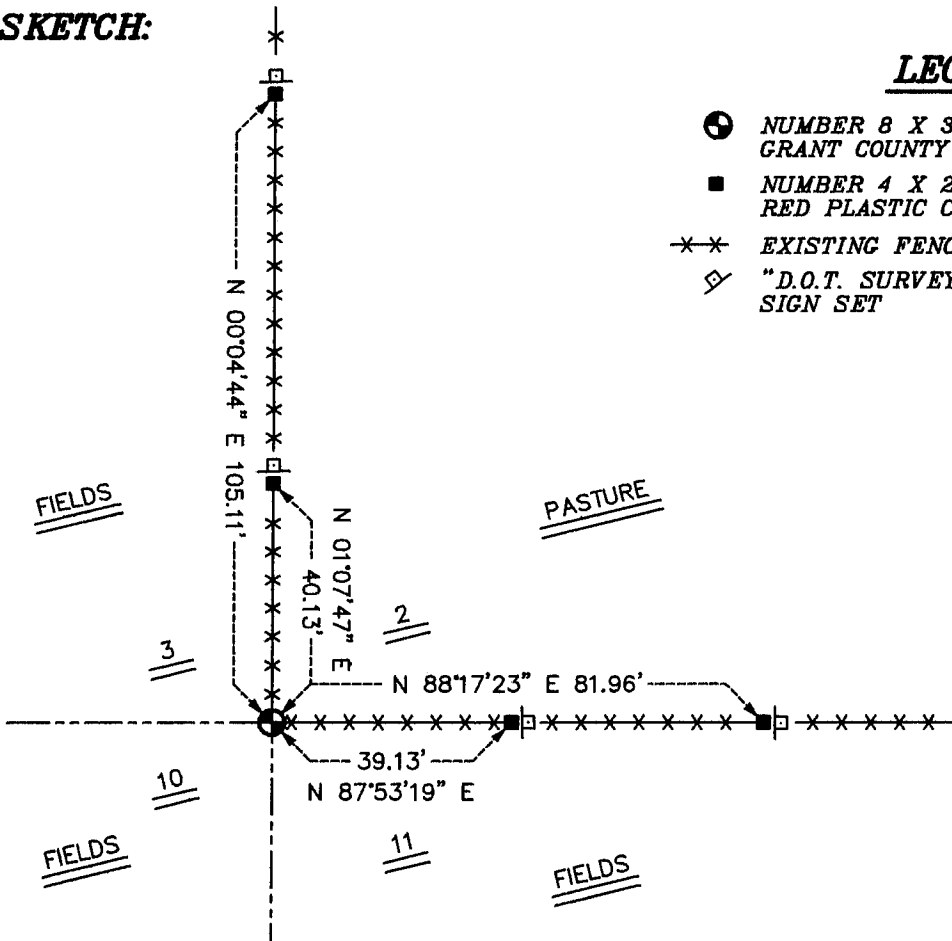
CORNER WAS SET IN 1833 BY LUCIUS LYON.

**DESCRIPTION OF CORNER EVIDENCE FOUND:**

I FOUND AN EXISTING FENCE CORNER AND ACCEPTED THIS LOCATION AFTER AND E.D.M. AND G.P.S. TRAVERSE OF THE AREA.

**DESCRIPTION OF CORNER AND WITNESS MONUMENTS, REFERENCES AND ACCESSORIES USED TO PERPETUATE THE ORIGINAL OR RE-ESTABLISHED LOCATION OF THIS CORNER:**  
WITNESS TO THE CORNER LOCATION: BOBBY SEDGWICK ; SHELBY BLINDERT

**SKETCH:**



**LEGEND**

- NUMBER 8 X 30" REBAR SET WITH GRANT COUNTY ALUMINUM CAP
- NUMBER 4 X 24" REBAR SET WITH RED PLASTIC CAP AND SIGN
- xx EXISTING FENCE LOCATION
- ◇ "D.O.T. SURVEY MARKER NEARBY" SIGN SET

