

GRANT COUNTY CERTIFIED LAND CORNER

CORNER NUMBER 24

CERTIFICATE:

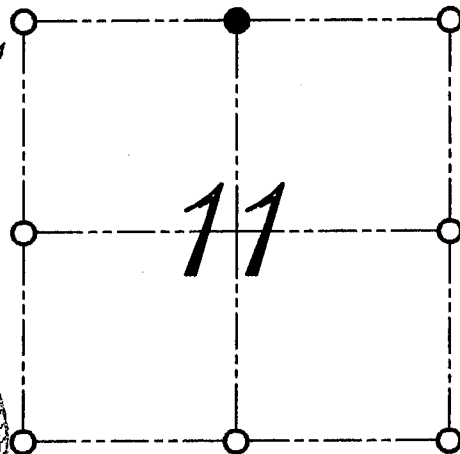
I, LARRY L. AUSTIN, DO HEREBY CERTIFY THAT ON EIGHTH DAY OF MAY, 1999, I FOUND OCCUPATIONAL EVIDENCE OF THE NORTH 1/4 CORNER SECTION 11, TOWN 2 NORTH, RANGE 2 WEST, OF THE FOURTH PRINCIPAL MERIDIAN, AND I RE-ESTABLISHED SAID CORNER ACCORDING TO THE WISCONSIN STATUTES AS SHOWN AND DESCRIBED HEREON.

DATED THIS TWENTY-SECOND DAY OF MAY, 1999

Larry L. Austin
LARRY L. AUSTIN S-1903



SEAL



● = CORNER LOCATION

NORTH 1/4 CORNER OF
SECTION 11, T 2 N R 2 W
TOWN OF PARIS

HISTORY OF ORIGINAL CORNER ESTABLISHMENT:

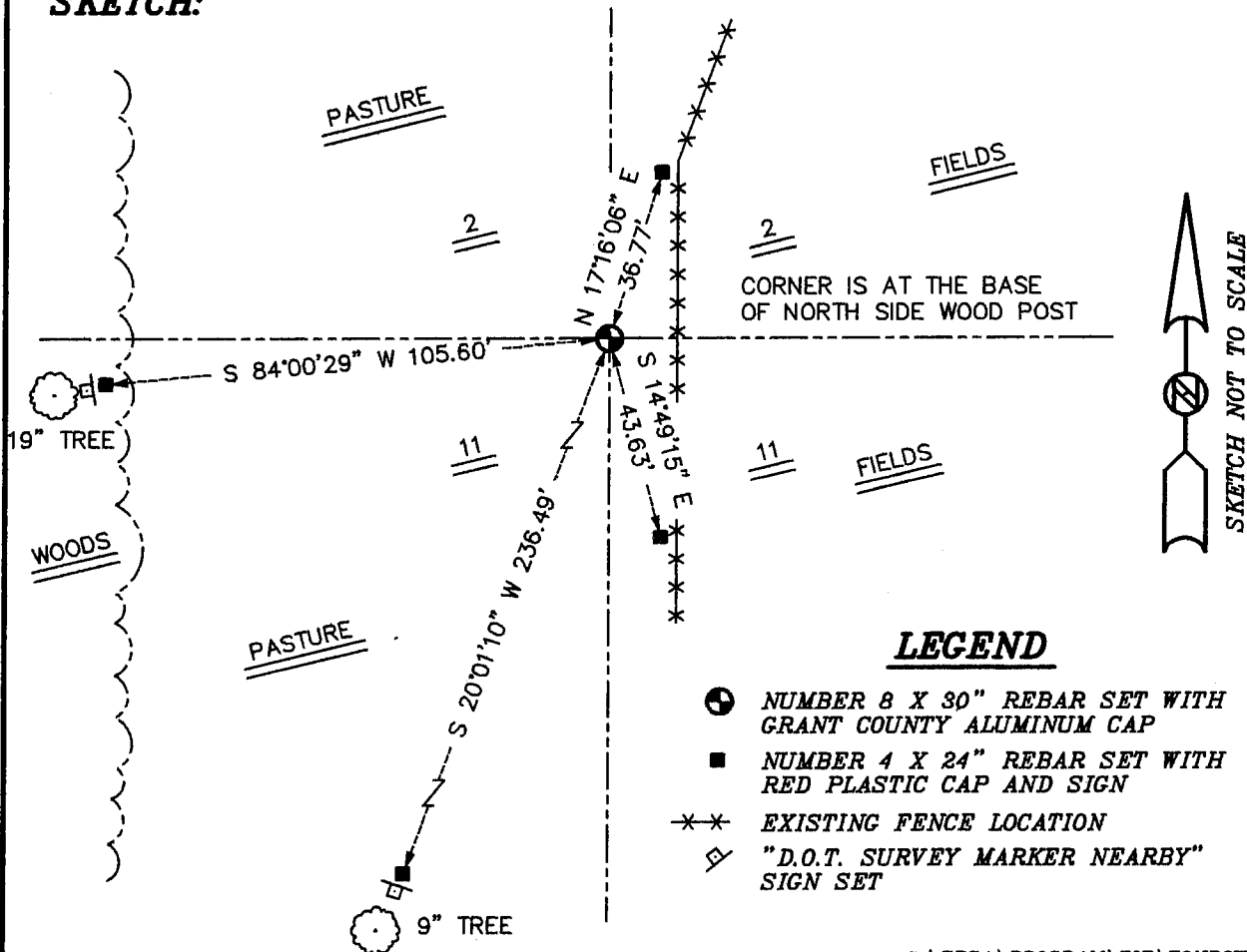
CORNER WAS SET IN 1833 BY LUCIUS LYON.

DESCRIPTION OF CORNER EVIDENCE FOUND:

I FOUND AN EXISTING FENCE POST AT THIS LOCATION AND ACCEPTED IT AFTER AN E.D.M. AND G.P.S. TRAVERSE OF THE AREA.

DESCRIPTION OF CORNER AND WITNESS MONUMENTS, REFERENCES AND ACCESSORIES USED TO PERPETUATE THE ORIGINAL OR RE-ESTABLISHED LOCATION OF THIS CORNER:
WITNESS TO THE CORNER LOCATION: BOBBY SEDGWICK ; SHELBY BLINDERT

SKETCH:



LEGEND

- NUMBER 8 X 30" REBAR SET WITH GRANT COUNTY ALUMINUM CAP
- NUMBER 4 X 24" REBAR SET WITH RED PLASTIC CAP AND SIGN
- *-* EXISTING FENCE LOCATION
- "D.O.T. SURVEY MARKER NEARBY" SIGN SET