

GRANT COUNTY CERTIFIED LAND CORNER

CERTIFICATE:

I, LARRY L. AUSTIN, DO HEREBY CERTIFY THAT ON FIRST DAY OF MAY, 1999, I FOUND MONUMENTED EVIDENCE OF THE SOUTH 1/4 CORNER SECTION 1, TOWN 2 NORTH, RANGE 2 WEST, OF THE FOURTH PRINCIPAL MERIDIAN, AND I RE-ESTABLISHED SAID CORNER ACCORDING TO THE WISCONSIN STATUTES AS SHOWN AND DESCRIBED HEREON.

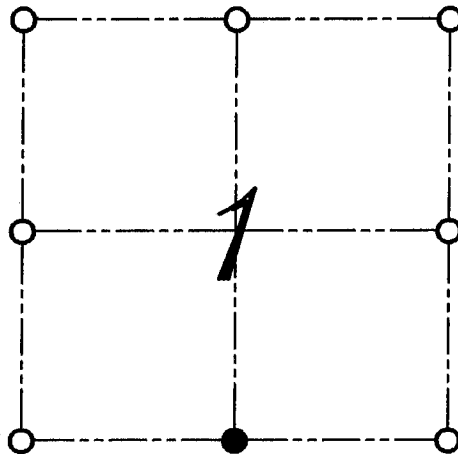
DATED THIS TWENTY-SECOND DAY OF MAY, 1999

Larry L. Austin
LARRY L. AUSTIN S-1903



SEAL

CORNER NUMBER 22



● = CORNER LOCATION

SOUTH 1/4 CORNER OF SECTION 1, T 2 N R 2 W TOWN OF PARIS

HISTORY OF ORIGINAL CORNER ESTABLISHMENT:

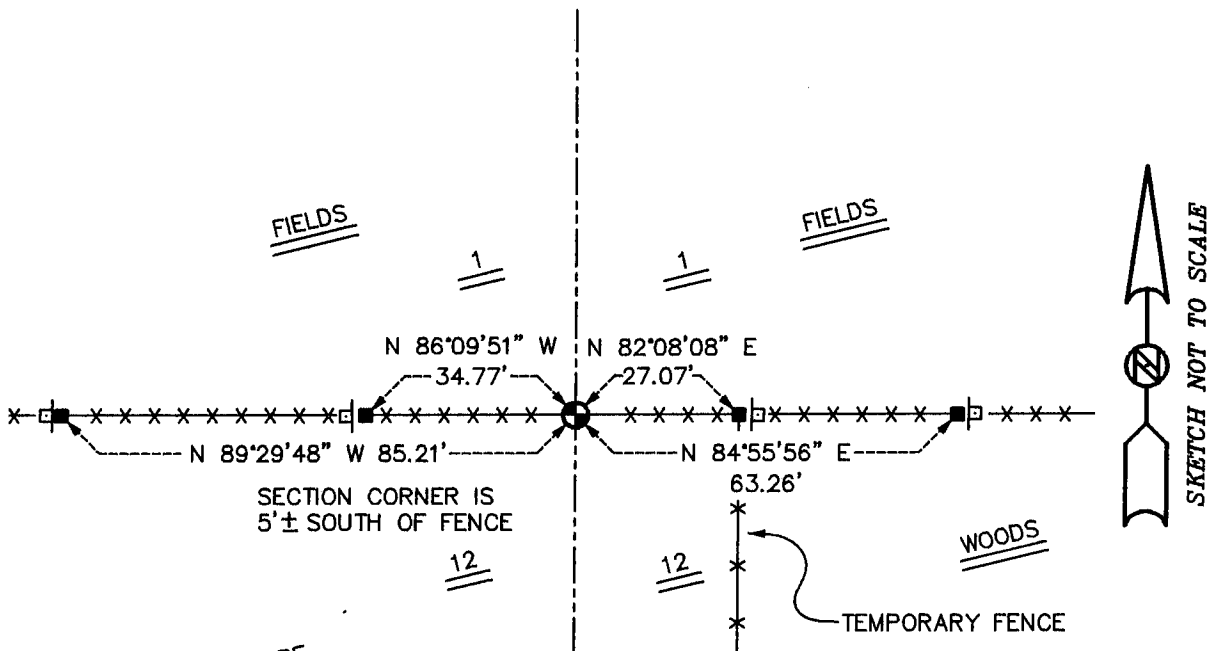
CORNER WAS SET IN 1833 BY LUCIUS LYON.
IN 1985 PAUL CHAFER SET A CAST ALUMINUM MONUMENT AT THIS LOCATION.

DESCRIPTION OF CORNER EVIDENCE FOUND:

I FOUND THE BROKEN OFF MONUMENT AND SET A 1" BY 30" IRON BAR WITH ALUMINUM CAP. ACCEPTED THIS LOCATION AFTER AN E.D.M. AND G.P.S. TRAVERSE OF THE AREA.

DESCRIPTION OF CORNER AND WITNESS MONUMENTS, REFERENCES AND ACCESSORIES USED TO PERPETUATE THE ORIGINAL OR RE-ESTABLISHED LOCATION OF THIS CORNER:
WITNESS TO THE CORNER LOCATION: BOBBY SEDGWICK ; SHELBY BLINDERT

SKETCH:



LEGEND

- NUMBER 8 X 30" REBAR SET WITH GRANT COUNTY ALUMINUM CAP
- NUMBER 4 X 24" REBAR SET WITH RED PLASTIC CAP AND SIGN
- ×× EXISTING FENCE LOCATION
- ◇ "D.O.T. SURVEY MARKER NEARBY" SIGN SET

CERTIFIED LAND CORNER RESTORATION

State of Wisconsin }
County of Grant } ss.

State Plane Coordinates
1,851,078.528 x
243,618.070 y

I, Paul W. Chafer, do hereby certify that on the 7th day of December, 1984, I found evidence of the North Quarter corner of Section 12 Township 2 North, Range 2 West, Fourth Principal Meridian, as described hereon; and that from this evidence I established a new monument and accessories as described hereon to perpetuate the original location of this corner:

Description of original monument and accessories and subsequent restorations:

Government survey of township was done in 1832-33 by Lucius Lyon. No further monumentation is recorded. Subsequent surveys were referenced to this corner but never noted any monumentation.

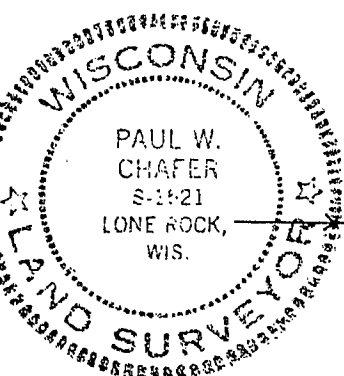
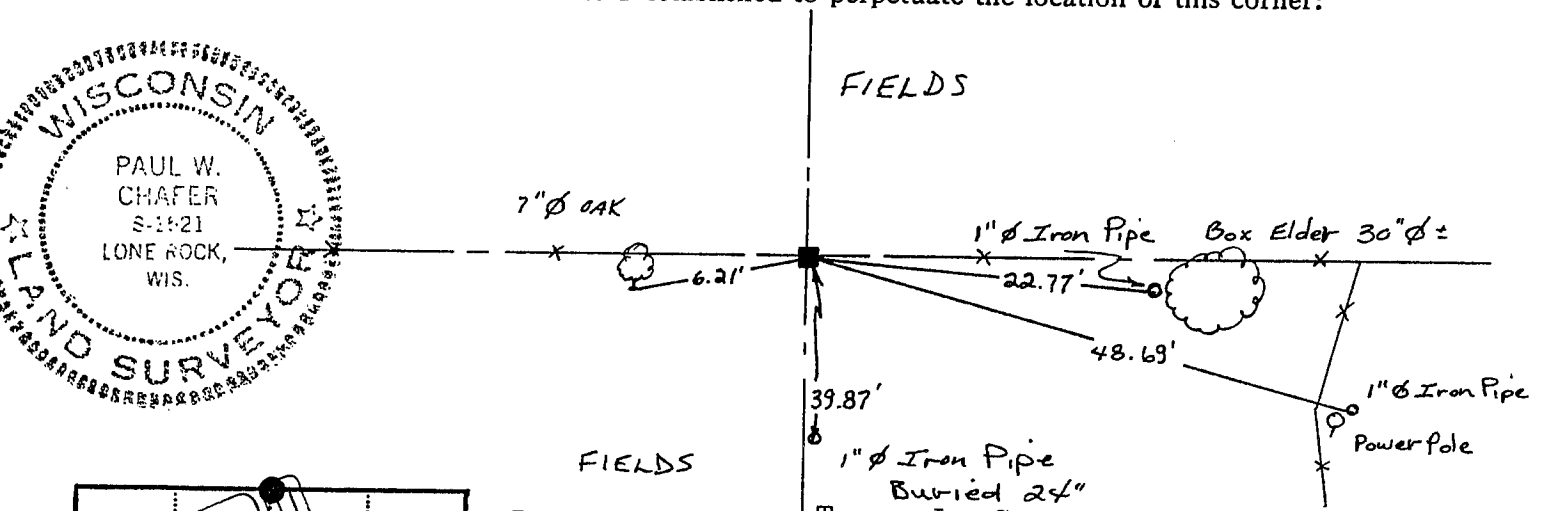
- 40.34 Set a post $\frac{1}{4}$ corner
- White Oak 13 East 13
- White Oak 14 S20W 33

Description of corner evidence found:

Corner was established in the existing East-West fence line, at a distance which compared favorably to that recorded in the original notes.

A thorough search of the surface was conducted, and evidence of the bearing trees looked for but nothing was found. The difference reflected in the fence bearings was used to determine final bearings of the lines from this point.

Description of monument and accessories I established to perpetuate the location of this corner:



Resident witnesses: Terry L. Cornell

Dated at Richland Center, Wisconsin, this 10 day of December 1984.

Signature: Paul W. Chafer Title: R.L.S.
(County Surveyor, Registered Land Surveyor, or other duly authorized official)

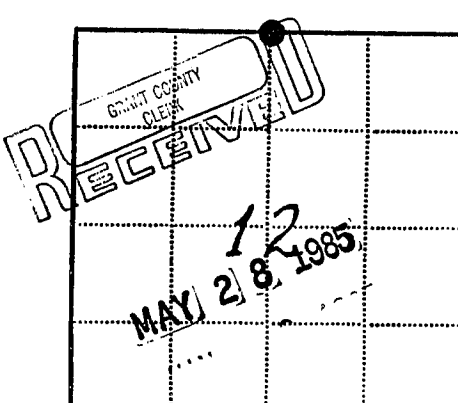
Surveyors Registration No. S-1521

Office of _____ County of _____

I hereby certify that the within instrument was filed in this office for record on the _____ day of _____ 19____, and was filed in Book No. _____ Page No. _____ of County Records.

Signature _____ Title _____

Township 2 North, Range 2 West, Section 12, Index No. _____, Page No. _____



- - Corner monument restored
- -