

U.S. PUBLIC LAND SURVEY MONUMENT RECORD

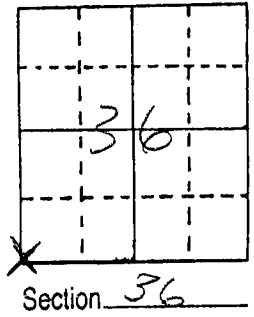
Note: This form is intended and designed to fulfill all requirements of Wisconsin Administrative Code, Chapter A-E 5.02, U.S. Public Land Survey Monument Record (3) (a) (b) (c) (d) (e) (f) (g) (h) (i). An additional sheet may be added if necessary to conform with said requirements.

(a) Corner location: Township 2 North

Range 1 East/West

Town/City/Village CUBA CITY

County GRANT



(b) (f) (g) (h) Description of monument found at this corner and if it was accepted, state all evidence (material, testimonial, occupational, plats, records, other monuments) used as a basis for accepting. If not accepted or if nothing was found, state evidence used as basis for establishing location. If reestablished through lost corner proportionate methods, indicate all monuments, distances and directions used to establish.

*SET MONUMENT AT FOUND P.K. NAIL IN
CENTERLINE OF MODEL ROAD AT OCCUPIED
CORNER LOCATION.*

(c) (d) (e) Plan view of corner with ties to at least 4 witness monuments. If in disagreement with previously established corner, show the distances between the two corners and also indicate the ties to the disputed corner.

NOT TO SCALE

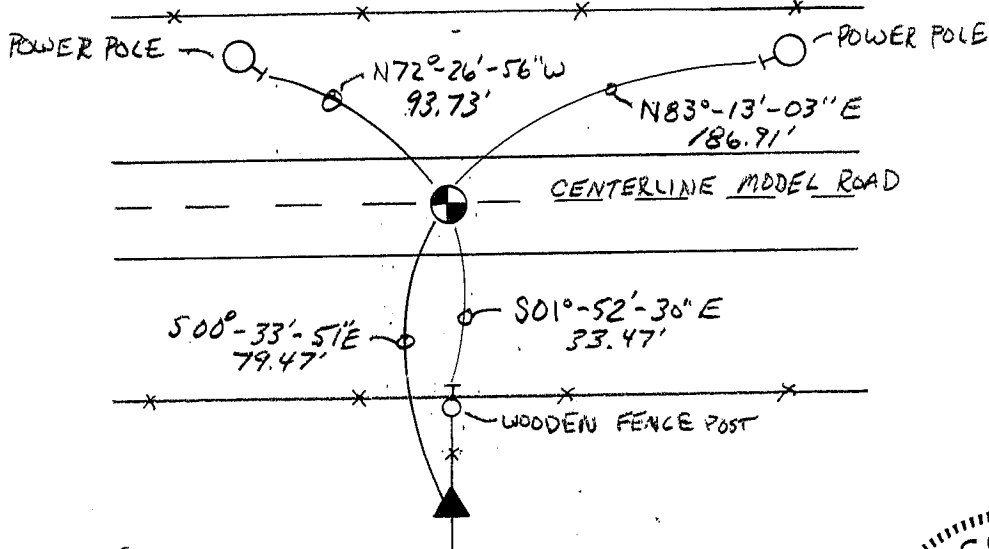
LEGEND

⊙ SET 1/4" REBAR

▲ SET 1/2" REBAR

—X— FENCE

—|— SPIKE



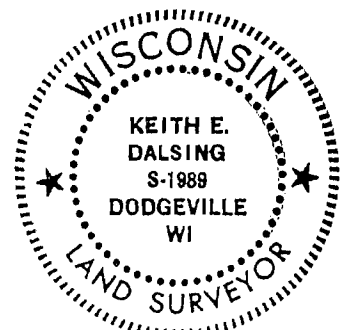
(i) I, KEITH E. DALSING
(type or print name) certify that the corner location on this record was determined by me or under my direction and control and that this U.S. Public Land Survey Monument Record is correct and complete to the best of my knowledge and belief.

Keith E. Dalsing

6-21-00

Signature

Date

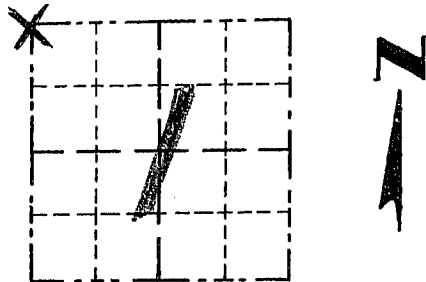


GRANT COUNTY

Survey Monument Record

TYPE OF MONUMENT 3/4" x 24" Round Bar
 STATE PLANE COORDINATES: N _____
 E _____
 ELEVATION — M.S.L. DATUM: _____
 THETA ANGLE: _____
 FIELD BOOK: 92-15
 PAGE _____

CORNER NO. 3
 SECTION 1
 TOWN 1 N
 RANGE 1 W
 NW COR.



LOCATION
(Indicated by "X")

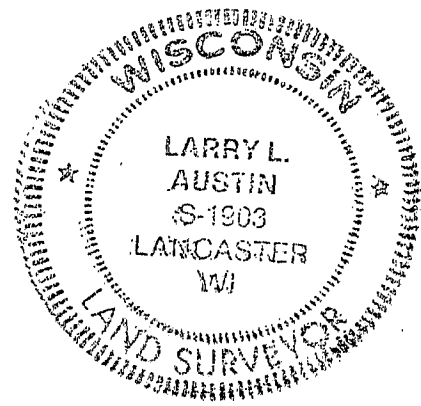
BASIS FOR MONUMENT LOCATION

(Use reverse side if necessary)

Show info such as: History of corner, with reference to Vol. and pg., dates, surveyor; exact description of monument replaced; if location computed, by taped or EDM traverse; landowner, remarks, etc.

SEAL:

ORIGINAL CORNER SET IN 1832 BY LUCIUS LYON; NO RECORD FOUND OF CORNER SINCE ORIGINAL SURVEYS; I SET THE CORNER AT E OF MODEL ROAD & OCCUPATION LINE TO THE SOUTH; VERIFIED BY EDM TRAVERSE OF THE AREA. (IT SHOULD BE NOTED THAT THE CLOSING "40" FROM THE SOUTH IS 3 CHAINS LONGER THAN THE RECORDED DIMENSION FROM THE ORIGINAL NOTES)



CERTIFIED CORRECT

Larry L. Austin
 Registered Land Surveyor

DATE: 2/16/95

TIE SKETCH

Show at least three (3) ties and monument

LEGEND

- 3/4" x 24" SMOOTH BAR
SET = CORNER
- 1" IRON PIPES
SET = TIES

