

JUN 11 1980

FILED

# U.S. PUBLIC LAND SURVEY MONUMENT RECORD

Note: This form is intended and designed to fulfill all requirements of Wisconsin Administrative Code, Chapter A-E 5.02, U.S. Public Land Survey Monument Record(3)(a)(b)(c)(d)(e)(f)(g)(h)(i). An additional sheet may be added if necessary to conform with said requirements.

(a) Corner Location:

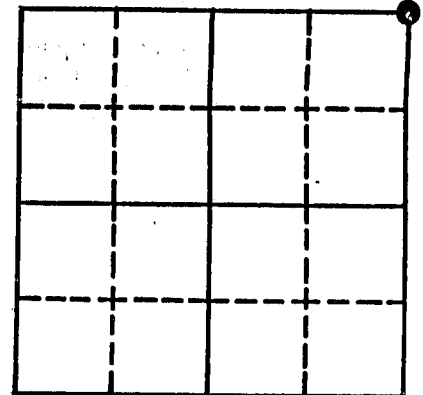
Township 1 North  
Range 1 East/West

Town/City/Village Hazel Green

County Grant

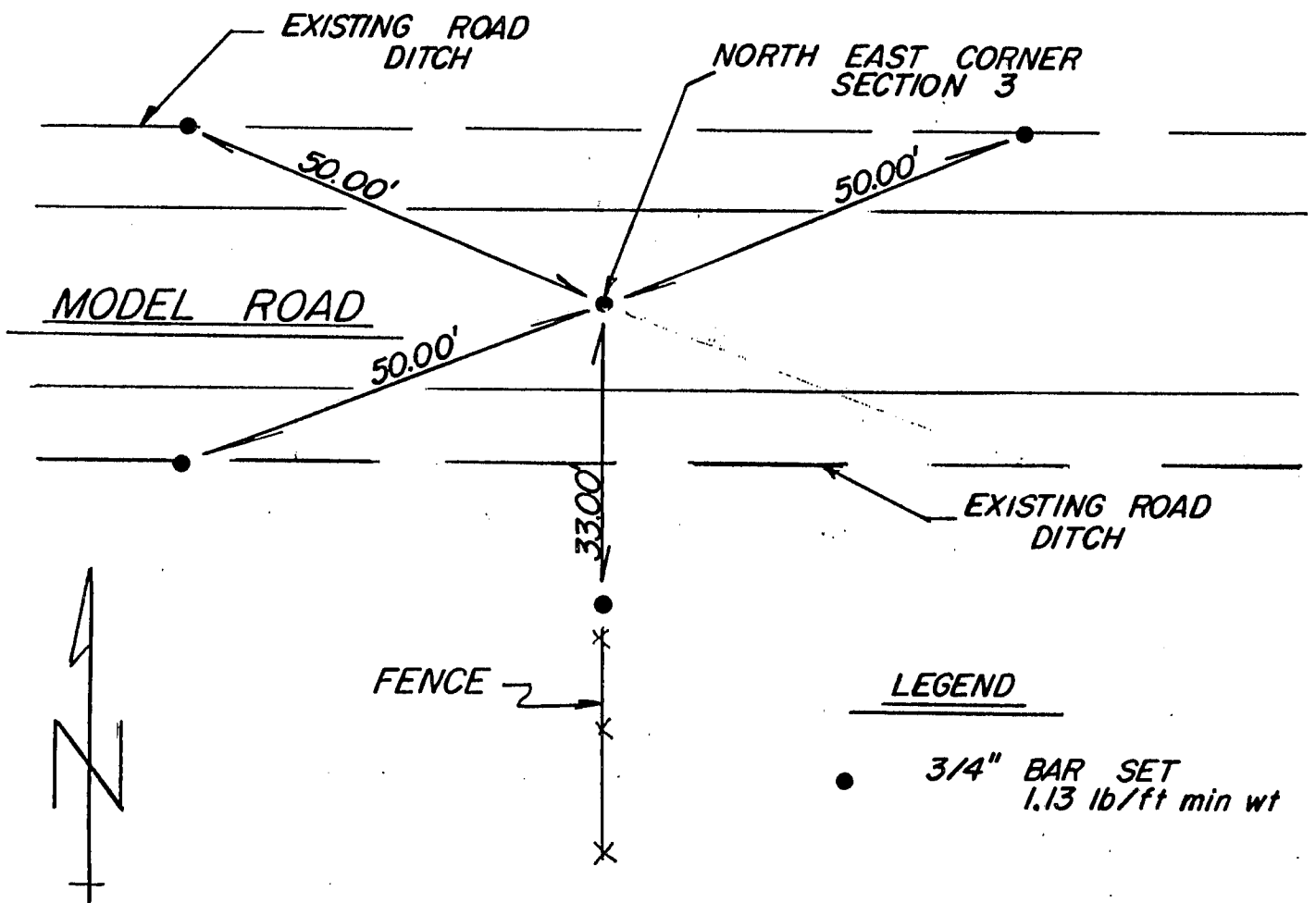
~~xxxxxxx~~ Plat of Survey No. \_\_\_\_\_ Page No. \_\_\_\_\_

0 = Corner monument restored David Helbing Survey



Section 3

(c)(d)(e) Plan view of corner with ties to at least 4 witness monuments. If in disagreement with previously established corner, show the distances between the two corners and also indicate the ties to the disputed corner.



0.57

(b)(f)(g)(h) Description of monument found at this corner and if it was accepted, state all evidence (material, testimonial, occupational, plats, records, other monuments) used as a basis for accepting. If not accepted or if nothing was found, state evidence used as basis for establishing location. If reestablished through lost corner proportionate methods, indicate all monuments, distances, and directions used to establish.

Researched Grant County Survey Records for information regarding this corner. The last evident survey was done in June of 1855 regarding this section upon traversing and prorating the section the corner was established.

(i) I, Stanley J. King  
(type or print name) certify that the corner location on this record was determined by me or under my direction and control and that this U.S. Public Land Survey Monument Record is correct and complete to the best of my knowledge and belief.

Signature

*Stanley King*

Date

*6/6/90*

