

U.S. PUBLIC LAND SURVEY MONUMENT RECORD - GRANT COUNTY, WI

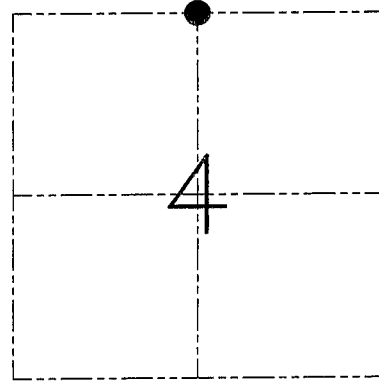
Section 4, Town 1 North Range 1 West, Town of Hazel Green

CERTIFICATE

I, Larry L. Austin, do hereby certify that the corner location on this record was determined by me and/or under my direct supervision and that this U.S. public land survey monument record is correct and complete to the best of my knowledge and belief.

Dated this 16th day of January, 2002

Larry L. Austin
Larry L. Austin S-1903



● = CORNER LOCATION

HISTORY OF CORNER ESTABLISHMENT

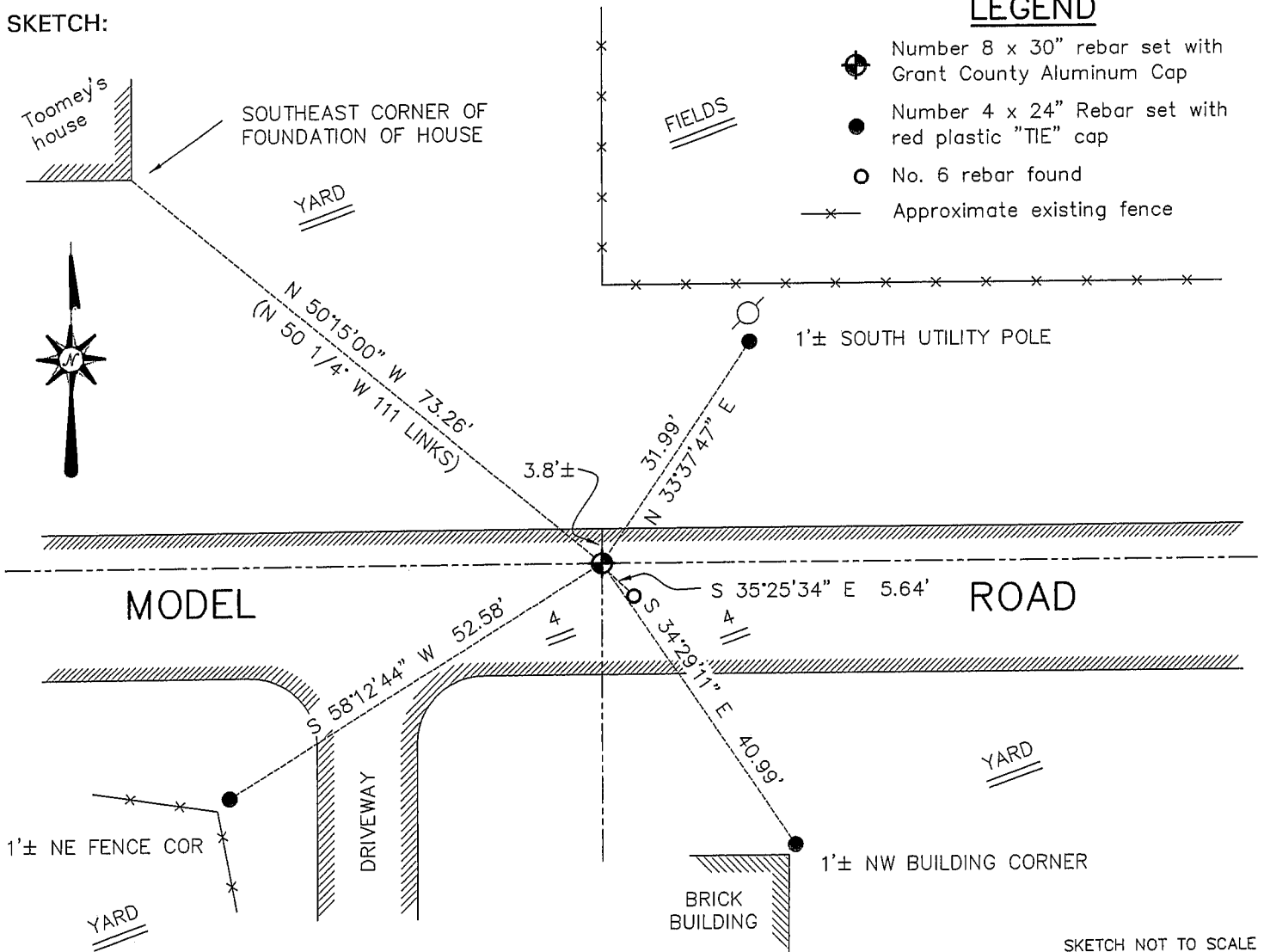
Corner was originally set in 1832 by Lucius Lyon. In 1879 Barber set the corner and tied to "Toomey's house". In 1995 I set a No 6 iron bar at this location.

DESCRIPTION OF CORNER EVIDENCE FOUND

I found "Toomey's" house and set the corner at the recorded bearing and distance from the house corner. This location fit area corners. Verified this location using EDM & GPS methods.

DESCRIPTION OF CORNER AND WITNESS MONUMENTS, references and accessories used to perpetuate the original or re-established location of this corner. Witnesses to the corner location Bobby Sedgwick & Shane Austin & Dustin Maas

SKETCH:



SKETCH NOT TO SCALE

AUSTIN ENGINEERING, LLC

4211 HWY 81 EAST, LANCASTER, WI 53813
PHONE 608-723-6363 FAX 608-723-6702

FIELDBOOK: SDR33, 2200
G: \T1NR1W\T1NR1W
C: \SWA\TIE\T1NR1W\08
CREW: BS-SB-SA-DM-KW

DRAWN BY: SW AUSTIN
APPROVED: LL AUSTIN

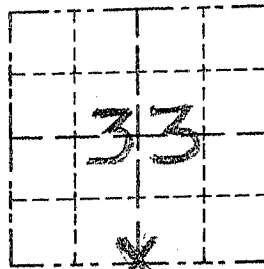
CORNER NUMBER 08

GRANT COUNTY

Survey Monument Record

TYPE OF MONUMENT 3/4" X 24" IRON BAR SET
 STATE PLANE COORDINATES: N _____
 E _____
 ELEVATION — M.S.L. DATUM: _____
 THETA ANGLE: _____
 FIELD BOOK: 95-03
 PAGE 30

CORNER NO. 128
 SECTION 33
 TOWN 2N
 RANGE 1W



LOCATION
 (Indicated by "X")

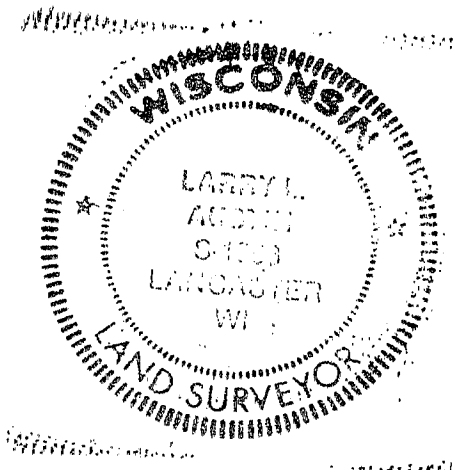
BASIS FOR MONUMENT LOCATION

(Use reverse side if necessary)

Show info such as: History of corner, with reference to Vol. and pg., dates, surveyor; exact description of monument replaced; if location computed, by taped or EDM traverse; landowner, remarks, etc.

No RECORD FOUND OF CORNER SINCE ORIGINAL SURVEYS. I SET THE CORNER AT OCCUPIED LOCATION AFTER VERIFICATION BY PROPORTIONATE MEAS. TO OTHER CORNERS IN THE AREA. EDM TRAVERSE USED

SEAL:



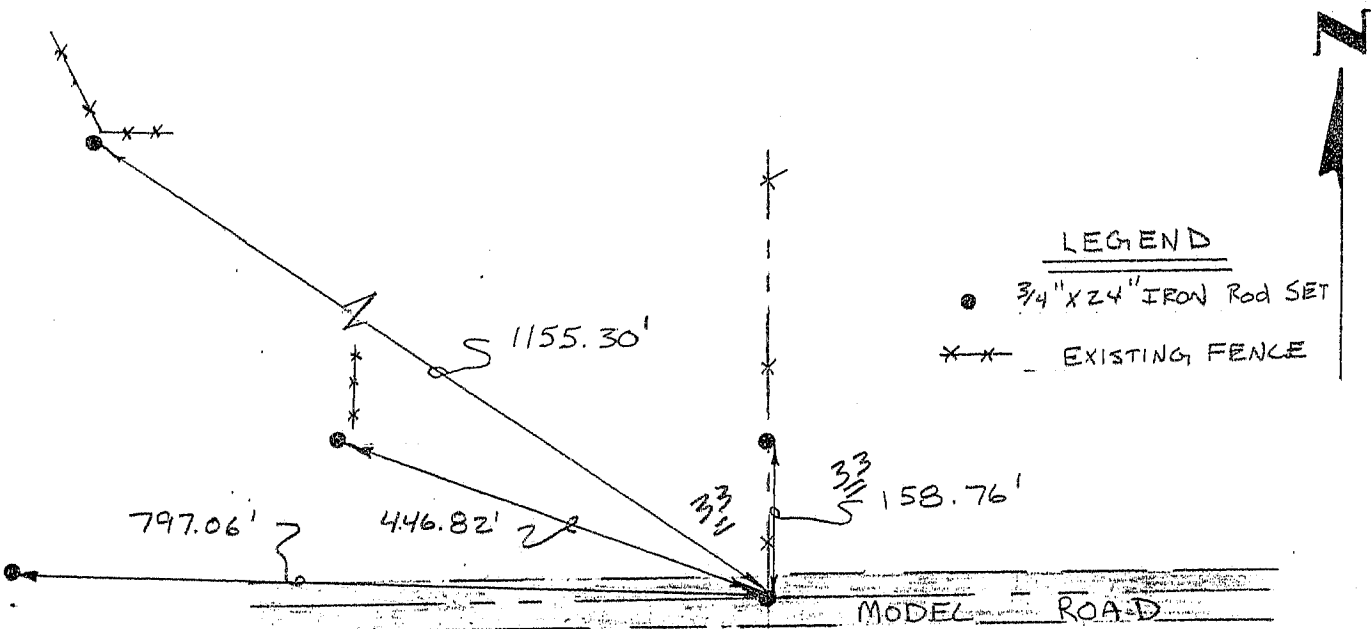
CERTIFIED CORRECT

Larry L. Austin
 Registered Land Surveyor

DATE: 8/15/95

TIE SKETCH

Show at least three (3) ties and monument



No SCALE