

**U.S. PUBLIC LAND SURVEY MONUMENT RECORD - GRANT COUNTY, WI**

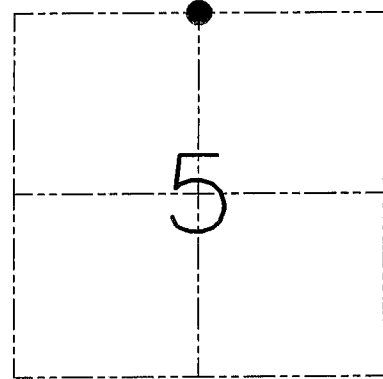
Section 5, Town 1 North Range 1 West, Town of Hazel Green

CERTIFICATE

I, Larry L. Austin, do hereby certify that the corner location on this record was determined by me and/or under my direct supervision and that this U.S. public land survey monument record is correct and complete to the best of my knowledge and belief.

Dated this 16th day of January, 2002

*Larry L. Austin*  
Larry L. Austin S-1903



● = CORNER LOCATION

HISTORY OF CORNER ESTABLISHMENT

Corner was originally set in 1832 by Lucius Lyon. In 1879 Barber found an ancient stone. In 1995 I set a No 6 iron bar.

DESCRIPTION OF CORNER EVIDENCE FOUND

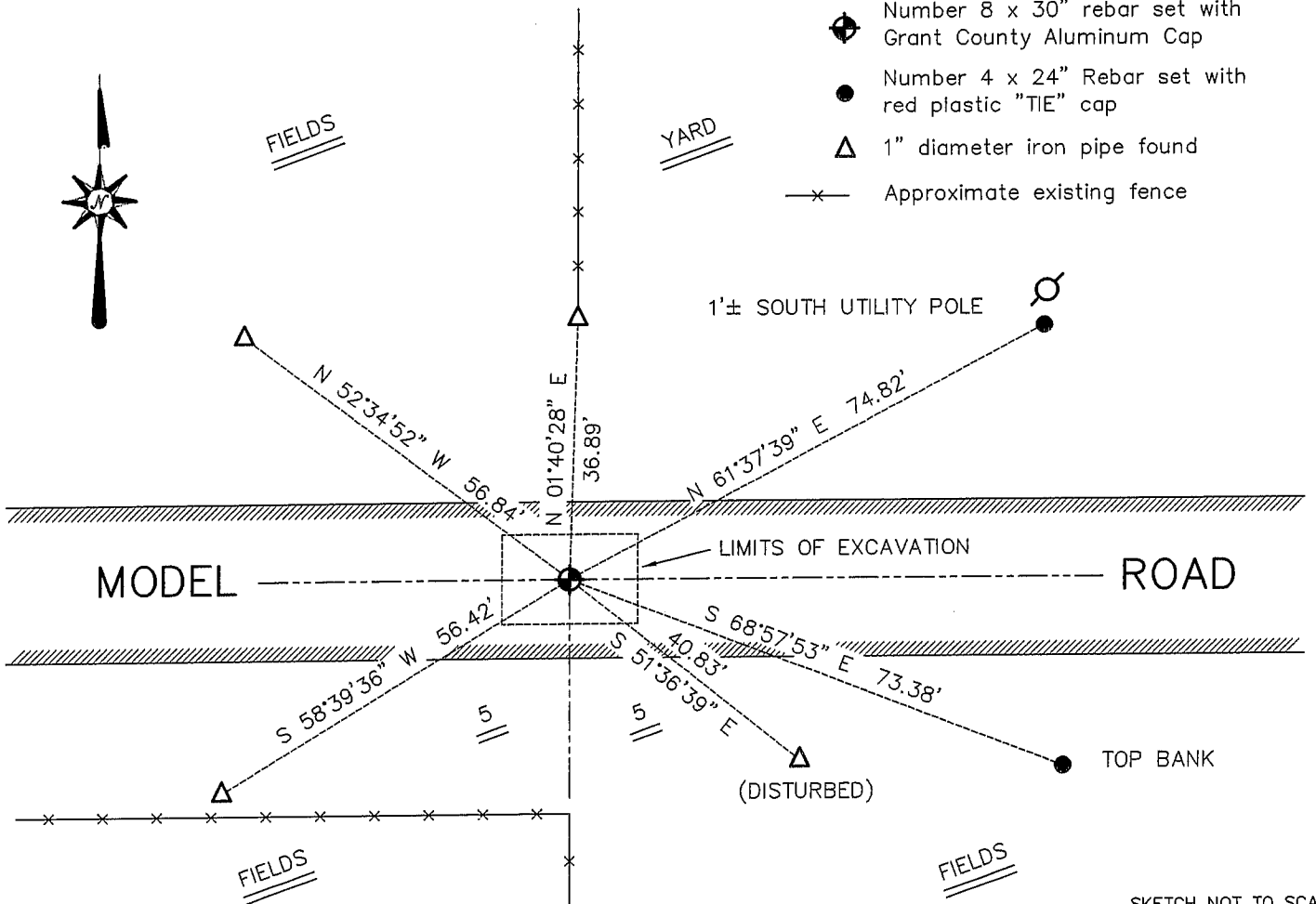
The area was excavated in search of the Stone which was not located. I reset the previous location and accepted it after an EDM & GPS traverse of the area.

DESCRIPTION OF CORNER AND WITNESS MONUMENTS, references and accessories used to perpetuate the original or re-established location of this corner. Witnesses to the corner location Bobby Sedgwick & Shane Austin & Dustin Maas

SKETCH:

LEGEND

- ◆ Number 8 x 30" rebar set with Grant County Aluminum Cap
- Number 4 x 24" Rebar set with red plastic "TIE" cap
- △ 1" diameter iron pipe found
- x— Approximate existing fence



SKETCH NOT TO SCALE

**AUSTIN ENGINEERING, LLC**

4211 HWY 81 EAST, LANCASTER, WI 53813  
PHONE 608-723-6363 FAX 608-723-6702

FIELDBOOK: SDR33, 2200  
G: \T1NR1W\T1NR1W  
C: \SWA\TIE\T1NR1W\10  
CREW: BS-SB-SA-DM

DRAWN BY: SW AUSTIN  
APPROVED: LL AUSTIN

**CORNER NUMBER 10**