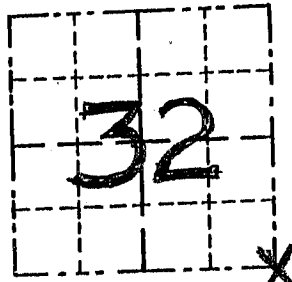


GRANT COUNTY

Survey Monument Record

TYPE OF MONUMENT 3/4" IRON BAR FOUND
 STATE PLANE COORDINATES: N _____
 E _____
 ELEVATION — M.S.L. DATUM: _____
 THETA ANGLE: _____
 FIELD BOOK: 9411
 PAGE _____

CORNER NO. 129
 SECTION 32
 TOWN 2 N
 RANGE 1 W
SE COR



LOCATION
 (Indicated by "X")



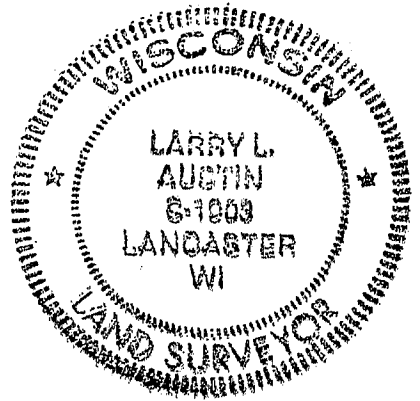
BASIS FOR MONUMENT LOCATION

(Use reverse side if necessary)

Show info such as: History of corner, with reference to Vol. and pg., dates, surveyor; exact description of monument replaced; if location computed, by taped or EDM traverse; landowner, remarks, etc.

SEAL:

NO RECORD OF CORNER FOUND
SINCE ORIG. SURVEYS; FOUND
A 3/4" SOLID BAR AT OCCUPIED
LOCATION, & ACCEPTED ITS
LOCATION AFTER EDM TRAVERSE
OF THE AREA



CERTIFIED CORRECT

Larry L. Austin
 Registered Land Surveyor

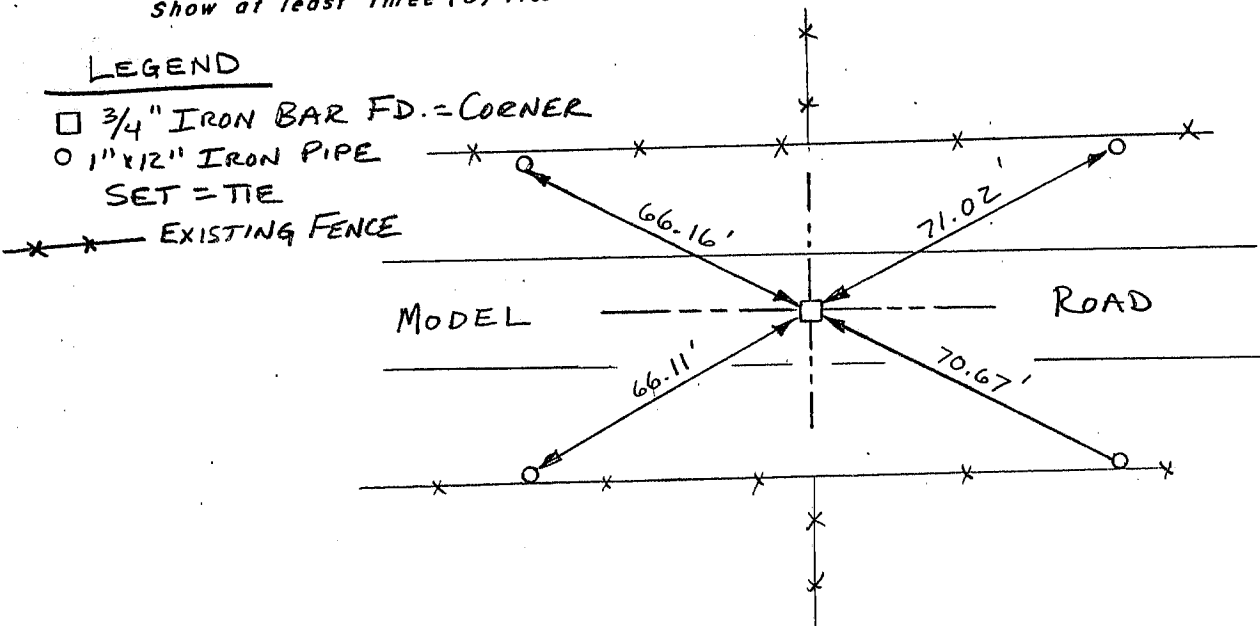
DATE: 2/4/95

TIE SKETCH

Show at least three (3) ties and monument

LEGEND

- 3/4" IRON BAR FD. = CORNER
- 1" x 1/2" IRON PIPE
- SET = TIE
- *—*— EXISTING FENCE



NO SCALE

U.S. PUBLIC LAND SURVEY MONUMENT RECORD - GRANT COUNTY, WI

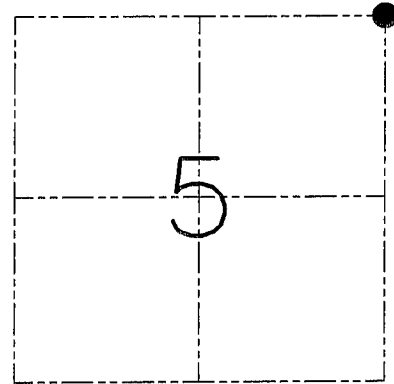
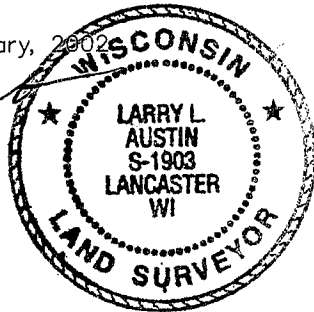
Section 5, Town 1 North Range 1 West, Town of Hazel Green

CERTIFICATE

I, Larry L. Austin, do hereby certify that the corner location on this record was determined by me and/or under my direct supervision and that this U.S. public land survey monument record is correct and complete to the best of my knowledge and belief.

Dated this 16th day of January, 2002

Larry L. Austin
Larry L. Austin S-1903



● = CORNER LOCATION

HISTORY OF CORNER ESTABLISHMENT

Corner was originally set in 1832 by Lucius Lyon. In 1879 Barber found an ancient corner stone. In 1995 I found a No. 6 iron bar at this location.

DESCRIPTION OF CORNER EVIDENCE FOUND

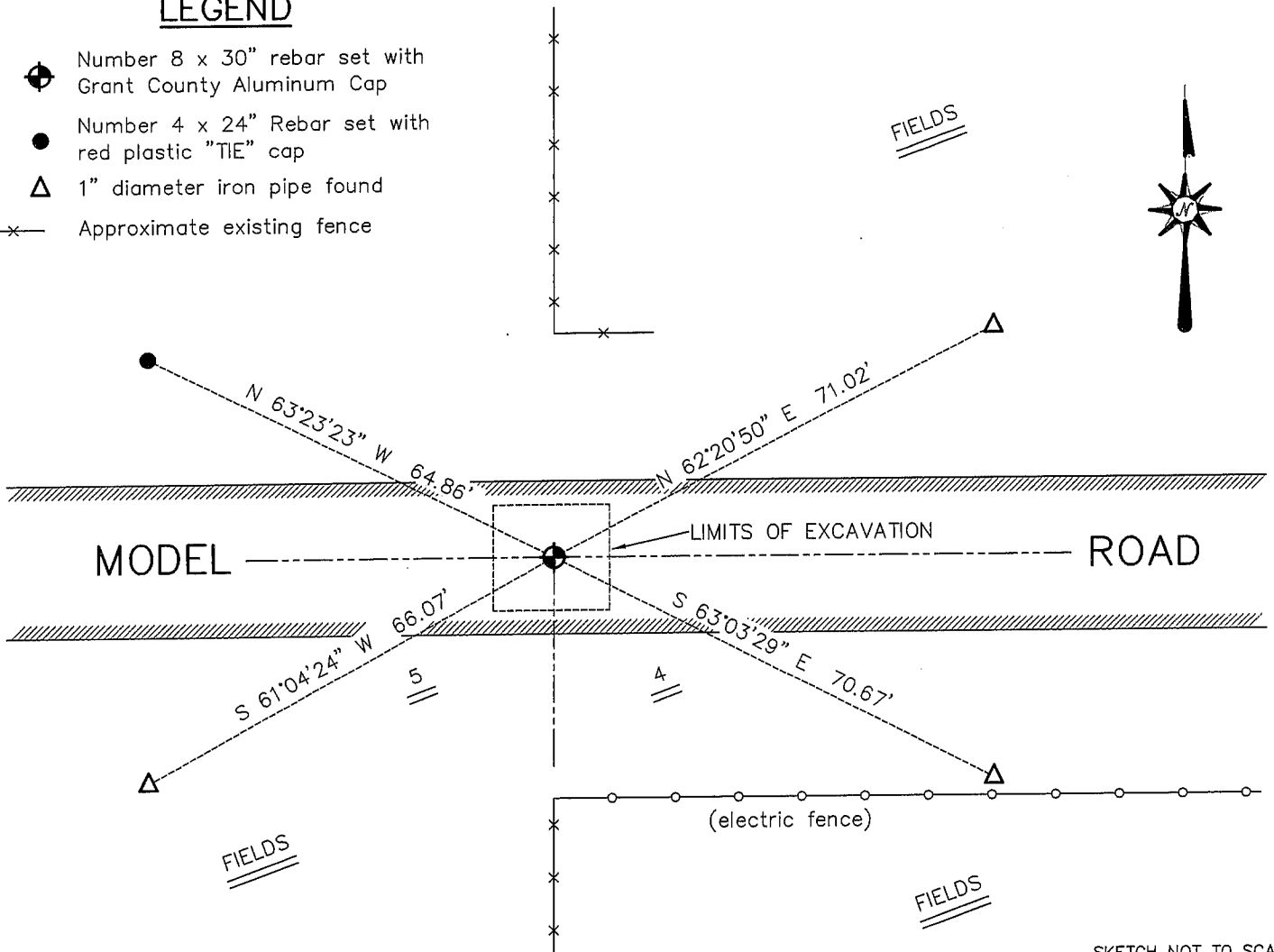
The area was excavated in search of the Stone which was not located. I reset the previous location and accepted it after an EDM & GPS traverse of the area.

DESCRIPTION OF CORNER AND WITNESS MONUMENTS, references and accessories used to perpetuate the original or re-established location of this corner. Witnesses to the corner location Bobby Sedgwick & Shane Austin & Dustin Maas

SKETCH:

LEGEND

- Number 8 x 30" rebar set with Grant County Aluminum Cap
- Number 4 x 24" Rebar set with red plastic "TIE" cap
- △ 1" diameter iron pipe found
- x— Approximate existing fence



SKETCH NOT TO SCALE

AUSTIN ENGINEERING, LLC

4211 HWY 81 EAST, LANCASTER, WI 53813
PHONE 608-723-6363 FAX 608-723-6702

FIELDBOOK: SDR33, 2200

G: \T1NR1W\T1NR1W

C: \SWA\TIE\T1NR1W\09

CREW: BS-SB-SA-DM-KW

DRAWN BY: SW AUSTIN

APPROVED: LL AUSTIN

CORNER NUMBER 09