

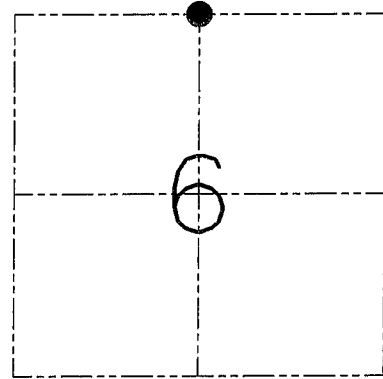
**U.S. PUBLIC LAND SURVEY MONUMENT RECORD - GRANT COUNTY, WI**  
 Section 6, Town 1 North Range 1 West, Town of Hazel Green

CERTIFICATE

I, Larry L. Austin, do hereby certify that the corner location on this record was determined by me and/or under my direct supervision and that this U.S. public land survey monument record is correct and complete to the best of my knowledge and belief.

Dated this 16th day of January, 2002

*Larry L. Austin*  
 Larry L. Austin S-1903



● = CORNER LOCATION

HISTORY OF CORNER ESTABLISHMENT

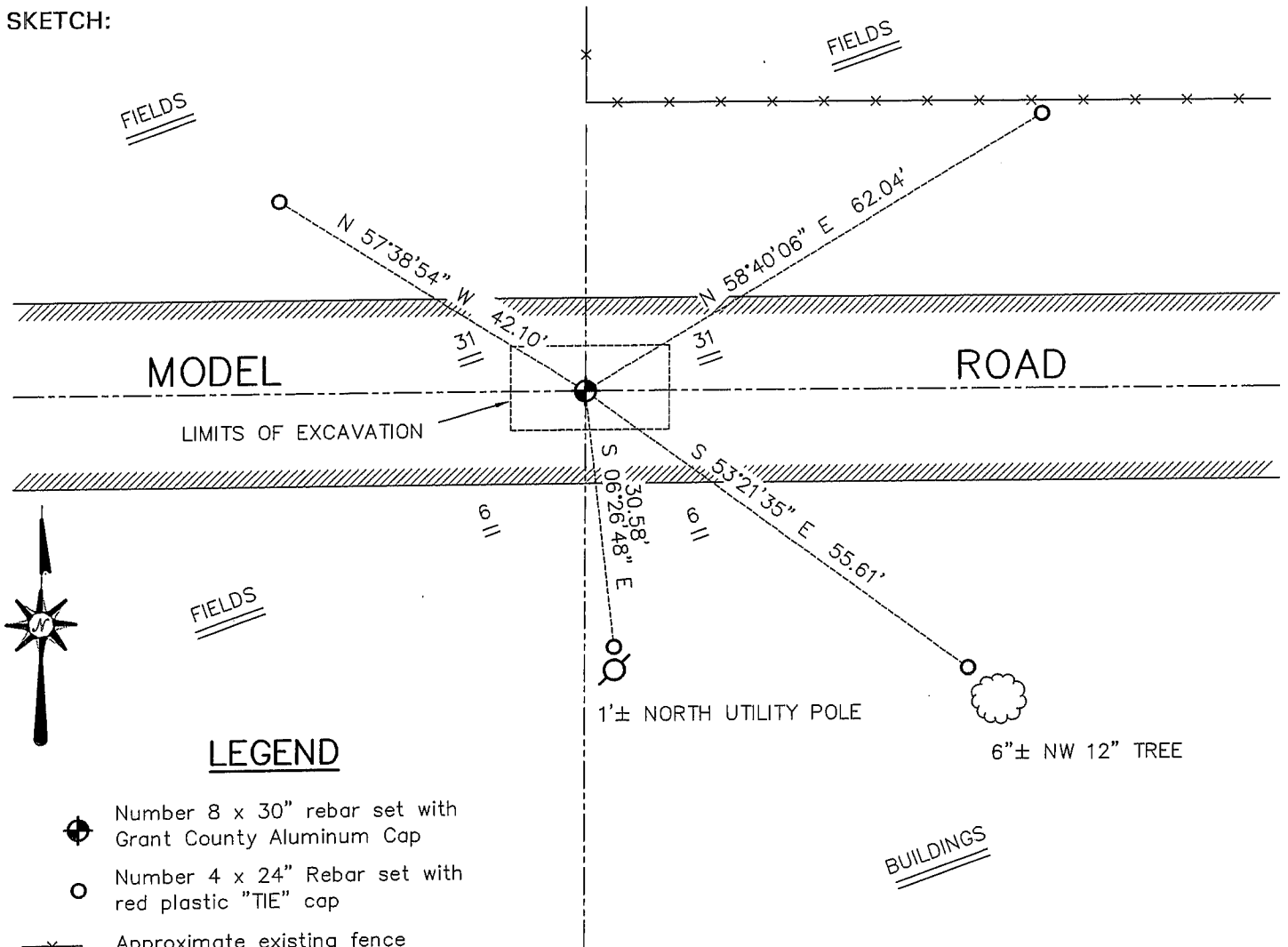
Corner was originally set in 1832 by Lucius Lyon.  
 In 1999 I set a No. 8 at this location.

DESCRIPTION OF CORNER EVIDENCE FOUND

The area was excavated in search of evidence of the corner. I found a Stone and replaced it after an EDM & GPS traverse of the area.

DESCRIPTION OF CORNER AND WITNESS MONUMENTS, references and accessories used to perpetuate the original or re-established location of this corner. Witnesses to the corner location Bobby Sedgwick & Dustin Maas & Shane Austin

SKETCH:



SKETCH NOT TO SCALE

**AUSTIN ENGINEERING, LLC**

4211 HWY 81 EAST, LANCASTER, WI 53813  
 PHONE 608-723-6363 FAX 608-723-6702

DRAWN BY: SW AUSTIN  
 APPROVED: LL AUSTIN

**CORNER NUMBER 12**

# GRANT COUNTY CERTIFIED LAND CORNER

CORNER NO. 132

**CERTIFICATE:**

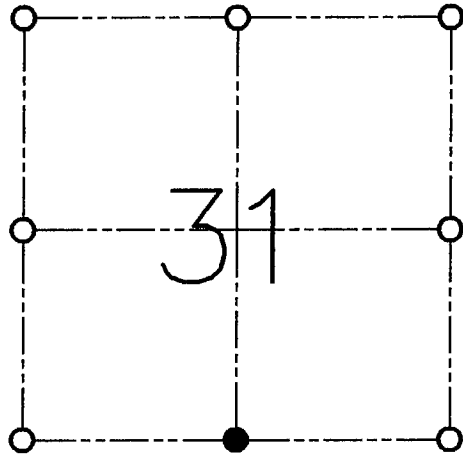
I, LARRY L. AUSTIN, DO HEREBY CERTIFY THAT ON TENTH DAY OF NOVEMBER, 1998, I FOUND OCCUPATIONAL EVIDENCE OF THE SOUTH 1/4 OF SECTION 31, TOWN 2 NORTH, RANGE 1 WEST, OF THE FOURTH PRINCIPAL MERIDIAN, AND I RE-ESTABLISHED SAID CORNER ACCORDING TO THE WISCONSIN STATUTES AS SHOWN AND DESCRIBED HEREON.

DATED THIS NINTH DAY OF JANUARY, 1999

*Larry L. Austin*  
LARRY L. AUSTIN S-1903



SEAL



● = CORNER LOCATION

SOUTH 1/4 OF SECTION 31  
T 2 N R 1 W  
TOWN OF SMELSER

**HISTORY OF ORIGINAL CORNER ESTABLISHMENT:**

CORNER SET IN 1832 BY LUCIUS LYON.

**DESCRIPTION OF CORNER EVIDENCE FOUND:**

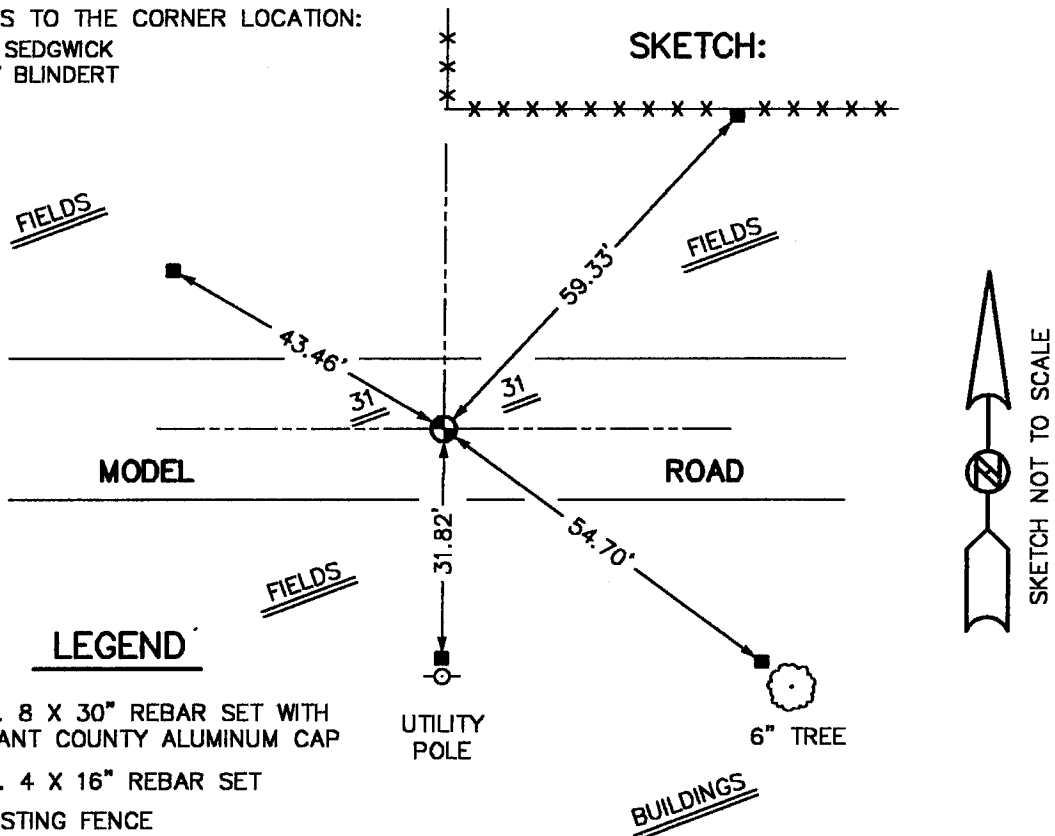
CORNER SET IN THE CENTERLINE OF THE EAST - WEST ROAD AND ONLINE WITH FENCE NORTH. THIS LOCATION FIT WELL WITH OTHER (OCCUPIED & MONUMENTED) CORNERS IN THE AREA. VERIFIED THIS LOCATION USING E.D.M. AND G.P.S. METHODS.

**DESCRIPTION OF CORNER AND WITNESS MONUMENTS, REFERENCES AND ACCESSORIES USED TO PERPETUATE THE ORIGINAL OR RE-ESTABLISHED LOCATION OF THIS CORNER:**

**WITNESS TO THE CORNER LOCATION:**

BOBBY SEDGWICK  
SHELBY BLINDERT

**SKETCH:**



**LEGEND**

- NO. 8 X 30" REBAR SET WITH GRANT COUNTY ALUMINUM CAP
- NO. 4 X 16" REBAR SET
- \*—\*— EXISTING FENCE
- UTILITY POLE
- ⊙ 6" TREE